

Trail 82 Tree Plan

CITY OF ENCINITAS – CIP PROJECT
ENGINEERING DEPARTMENT
October 24, 2024



PROJECT BACKGROUND

Trail 82 Project Components:

- New DG Trail & Fencing from Encinitas Blvd to El Camino Del Norte
- Storm Drain Infrastructure
- Trees: 48 trees protected in place, 65 removals, 65 off-site plantings



PROJECT GOALS



**Enhance safety
and mobility
along Rancho
Santa Fe Rd**



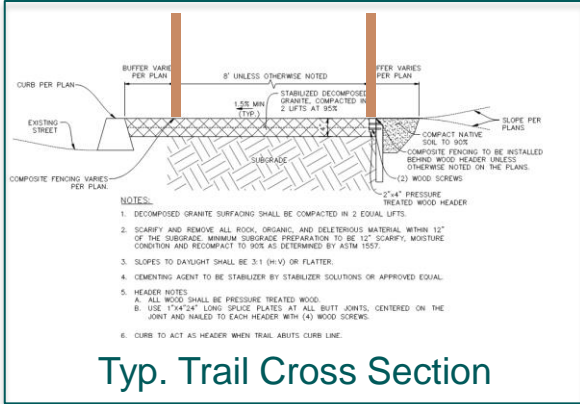
**Increase access
to Encinitas
Trails**



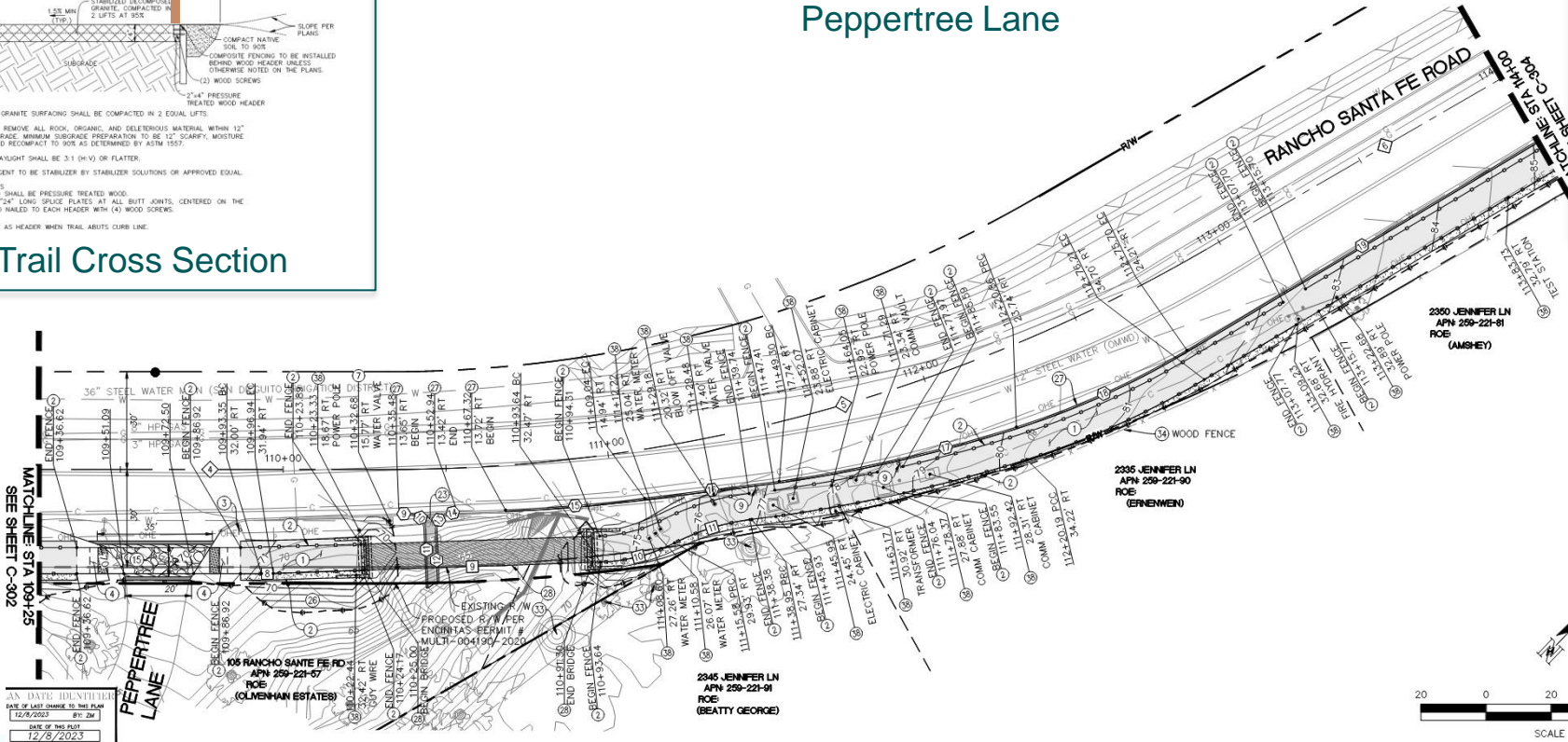
**Fortify the
Olivenhain
Emergency
Evacuation
Route**

PROJECT DESIGN

Proposed Project North of Peppertree Lane



Typ. Trail Cross Section



MATCH LINE: STA 109+25
SEE SHEET C-302

AN DATE IDENTIFIER
DATE OF LAST CHANGE TO THIS PLAN
12/9/2023 BY: ZM
DATE OF THIS PLAN
12/9/2023



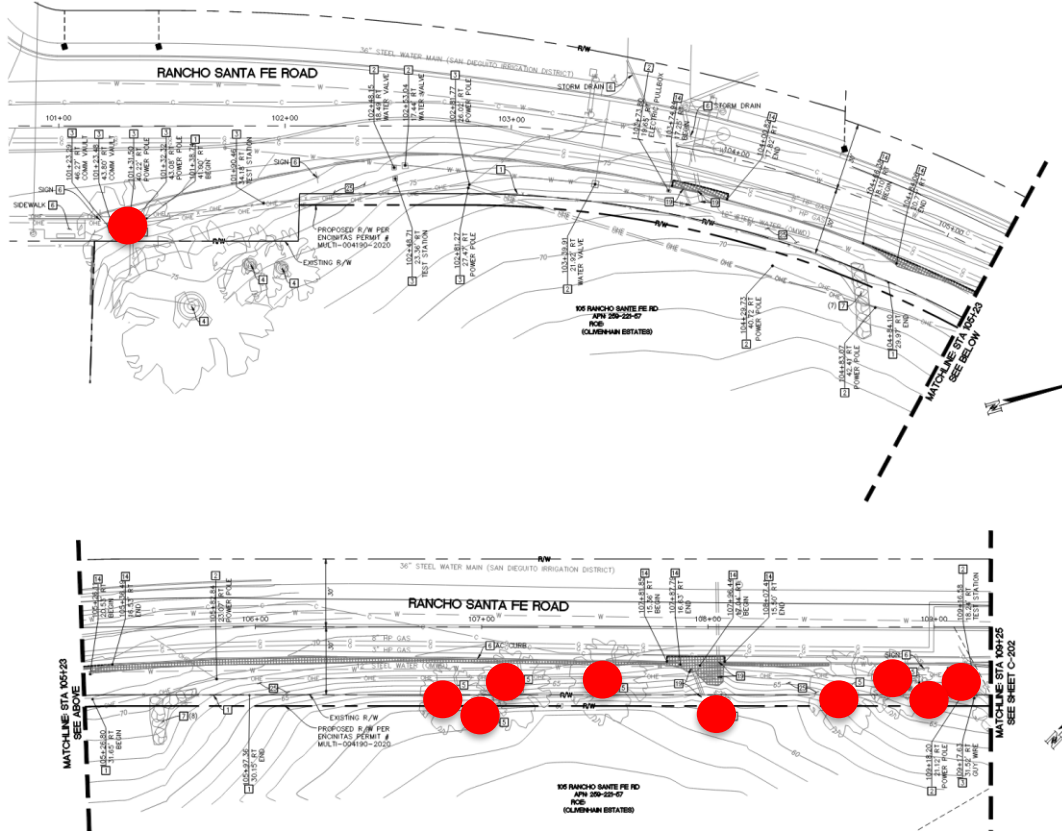
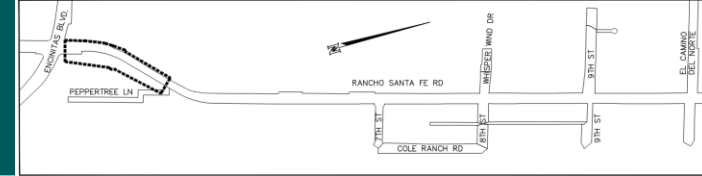
TREE REMOVAL OVERVIEW

- **Site Walk with City Arborists (Katrina & Hansen) August 27, 2024.**
- **Preserve and protect existing native trees to the maximum extent possible.**
- **All removals include one or more of the following conditions:**
 1. Critical root area overlap with new trail footprint
 2. Critical root area overlap with new grading area
 3. Tree health concerns
 4. Public safety concerns

Summary of Species Removed:

5 Sugar Gum, 13 California Pepper, 2 Yucca Gloriosa, 3 Fan Palm, 1 Aleppo Pine, 2 Sideroxylon, 10 Brazilian Pepper, 11 Myoporum, 2 Spanish Daggers, 1 Giant Bird of Paradise, 2 Cupressus Glabra, 6 Carolina Cherry, 3 Afghan Pine, 4 Olive

SHEET 1 OF 6 - SUMMARY

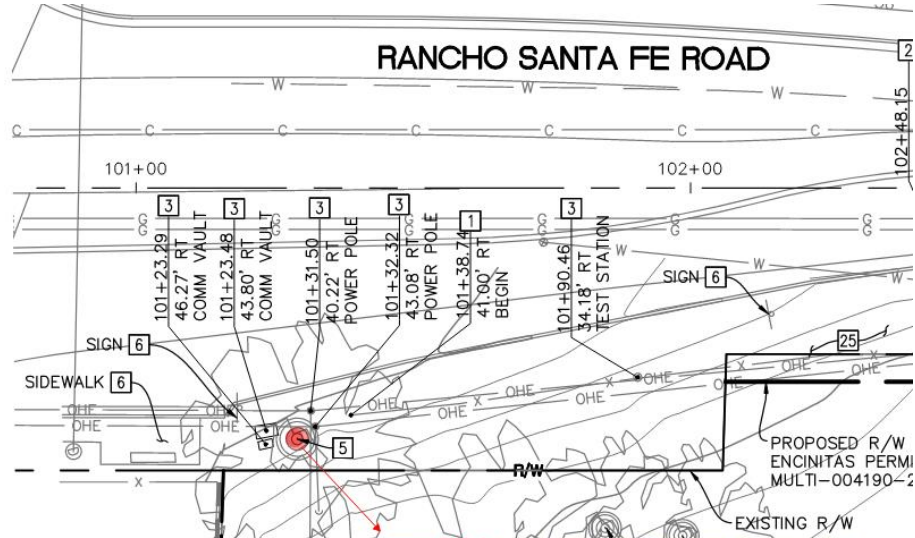
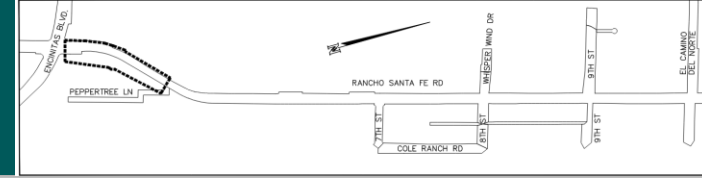


TREE TOTAL

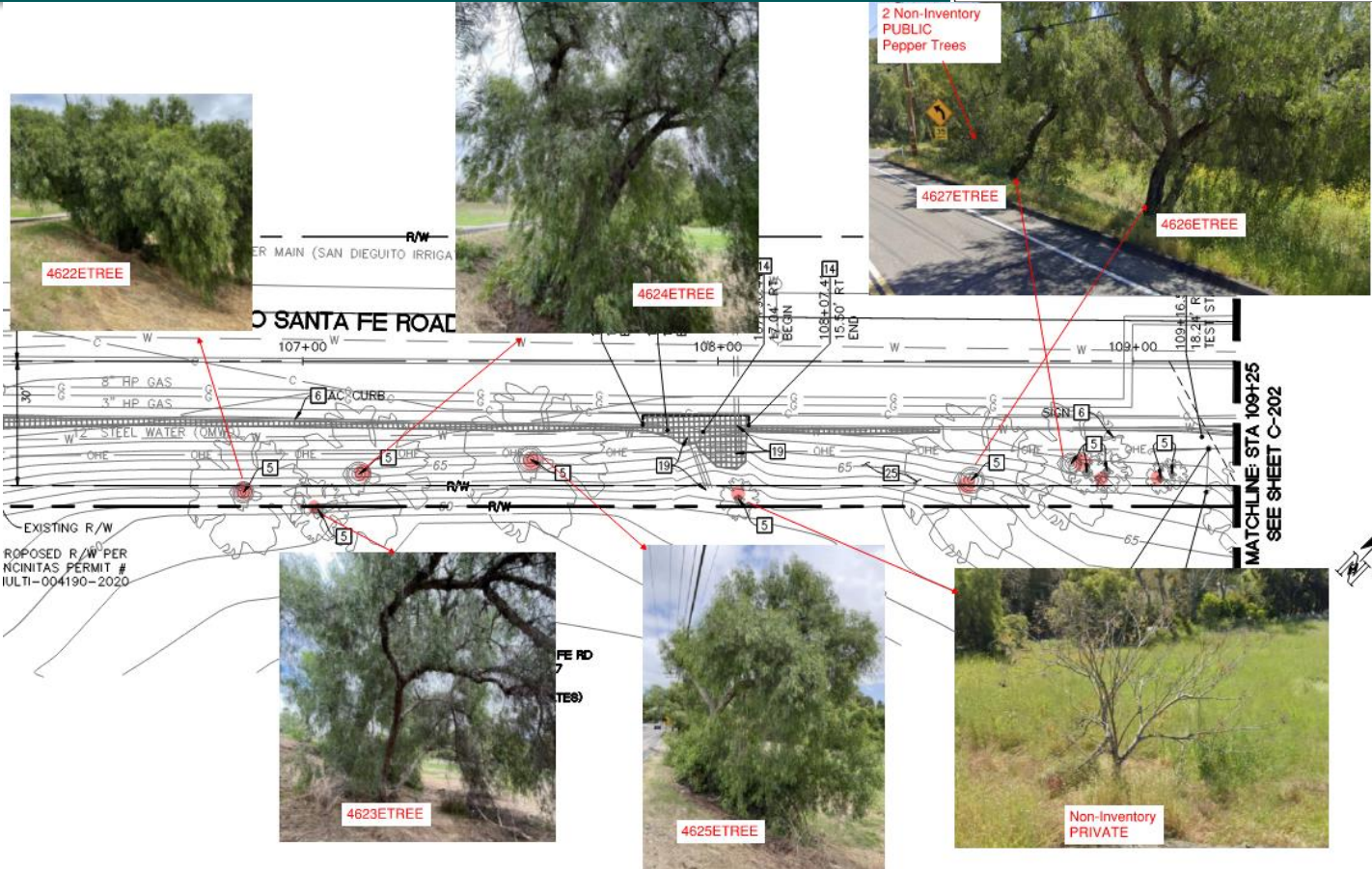
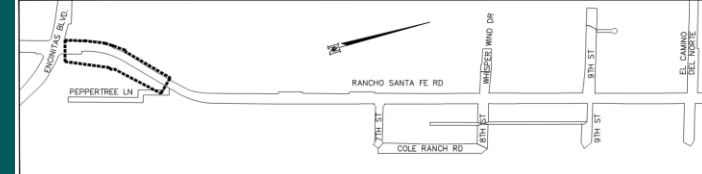
10 Removed & Replaced Off-site

1 Sugar gum, 9 California Peppers

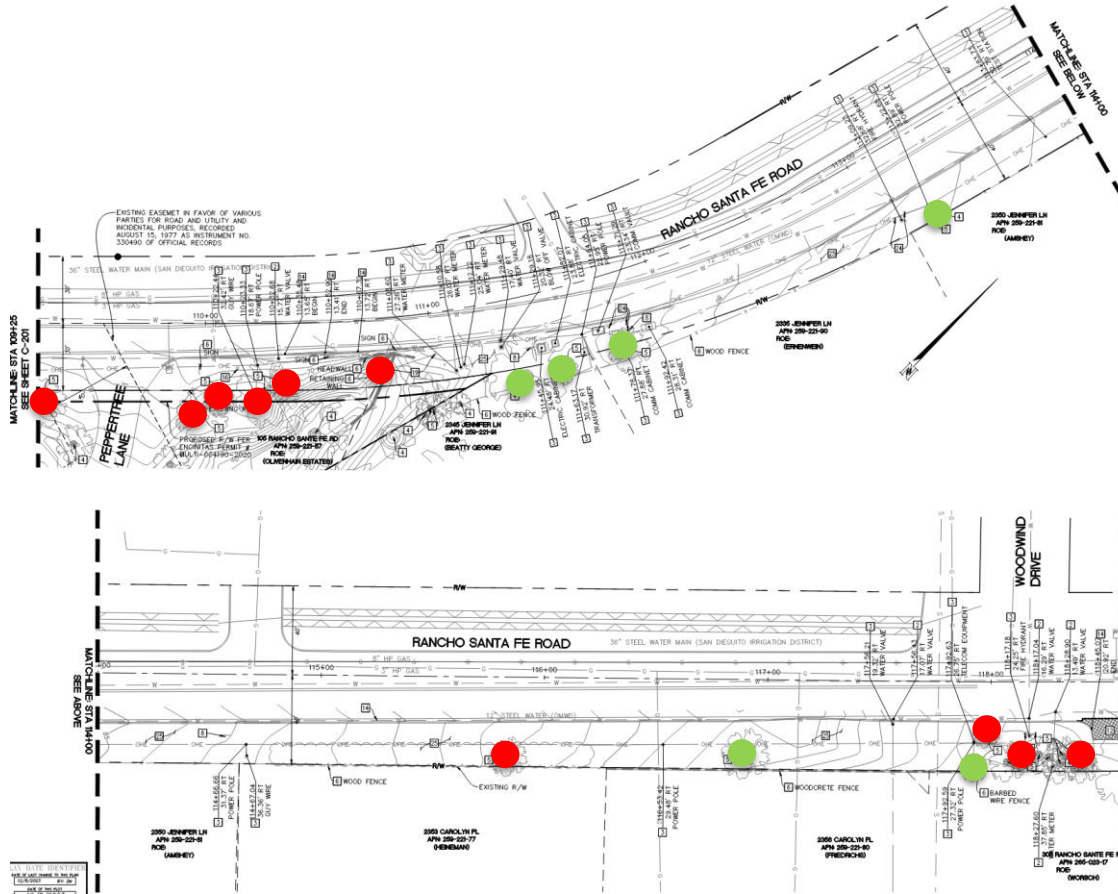
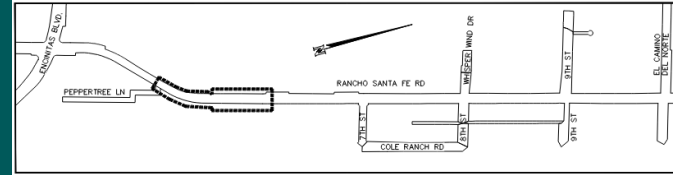
4754ETREE, 4622ETREE,
4623ETREE, 4624ETREE,
4625ETREE, 4672ETREE,
4626ETREE, 3 non inventory



SHEET 1 OF 6



SHEET 2 OF 6 - SUMMARY



TREE TOTAL

10 Removed & Replaced Off-site

2 yucca gloriosa, 4 California Pepper, 1 fan palm, 1 aleppo pine, 2 sideroxylon

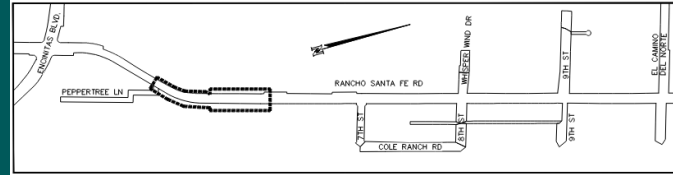
4628ETREE, 6 non-inventory public, 3 non-inventory private

9 Protect in Place

6 Schinus molle, 1 blue elderberry, 1 quercus agrifolia, 1 unclassified

6 non-inventory private, 3 non-inventory public

SHEET 2 OF 6



Non-Inventry
PRIVATE
Pepper



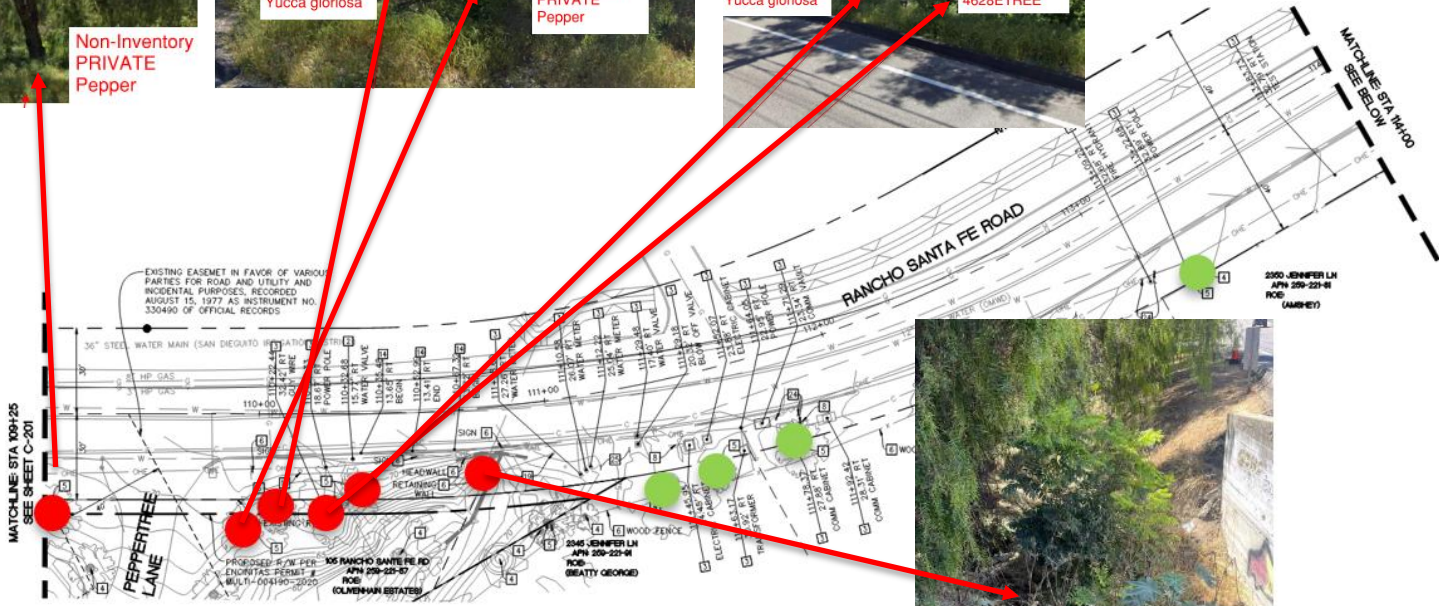
Non-Inventry
PRIVATE
Yucca gloriosa

Non-Inventry
PRIVATE
Pepper



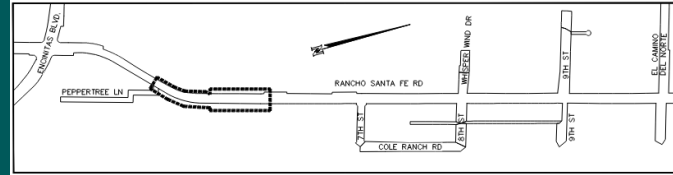
Non-Inventry
PUBLIC
Yucca gloriosa

4628ETREE



Non-Inventry
PUBLIC
chinese flame tree

SHEET 2 OF 6



Non-Inventory PUBLIC Fan Palm



Non-Inventory PUBLIC Aleppo Pine

Non-Inventory PUBLIC Sideroxylon

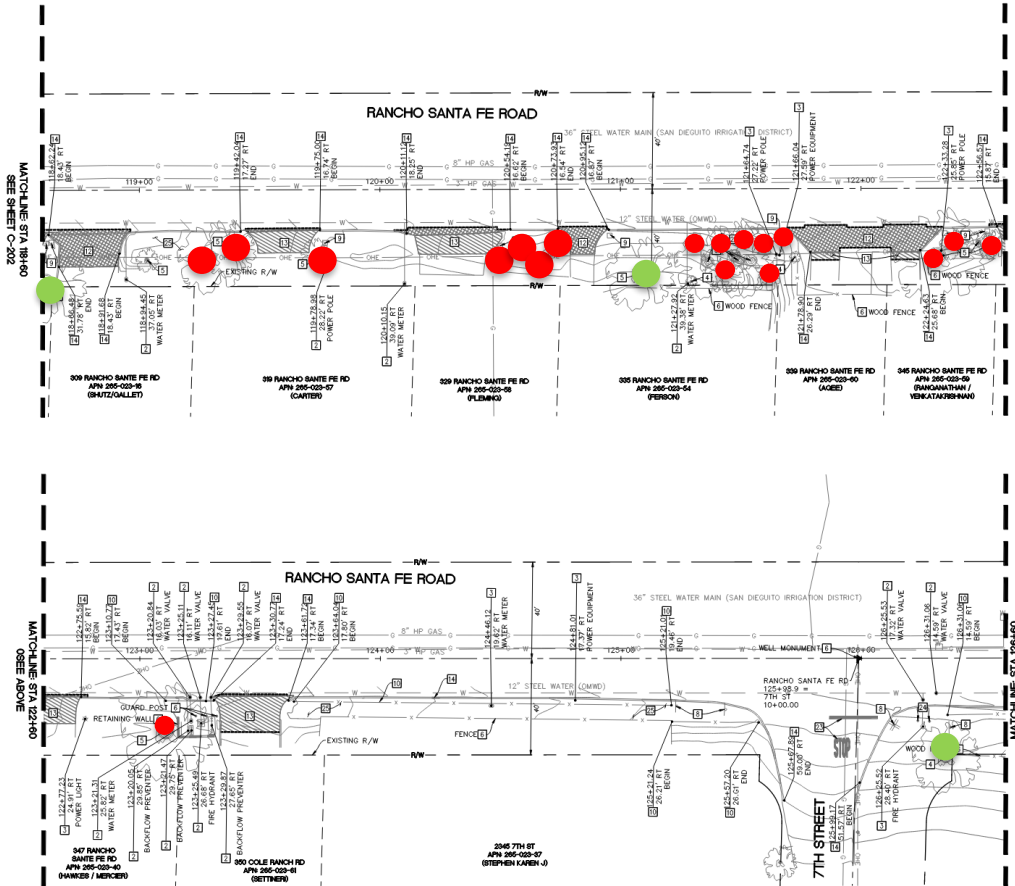
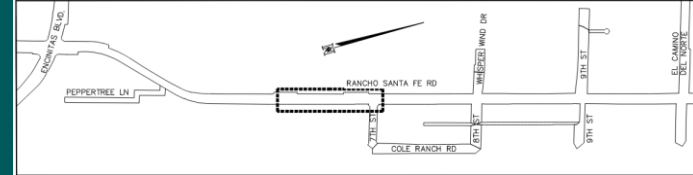
Non-Inventory PUBLIC Sideroxylon



Blue Elderberry
Plans will be revised in order to protect this native tree

Quercus agrifolia
Plans will be revised in order to protect this native tree

SHEET 3 OF 6 - SUMMARY



TREE TOTAL

18 Removed & Replaced Off-site

7 Brazilian Pepper, 4 Myoporum, 2 spanish dagger, 2 palm, 1 Giant Bird of Paradise, 2 cupressus glabra

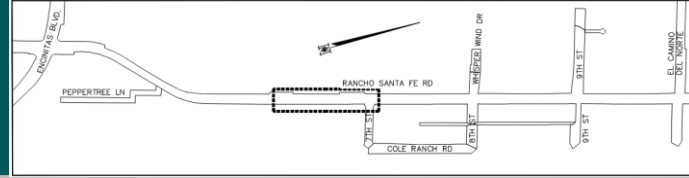
4637ETREE, 4636ETREE, 16 non-inventory public trees

3 Protect in Place

1 Bailey's Acacia, 1 sugar gum, 1 aleppo pine

3 non-inventory public trees

SHEET 3 OF 6



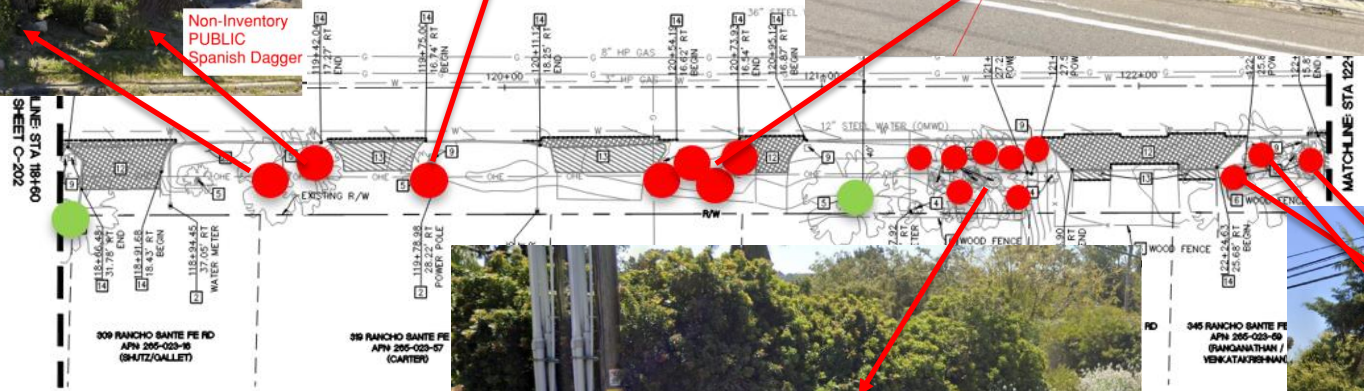
Non-Inventry PUBLIC Spanish Dagger



Non-Inventry PUBLIC Palm



4 Non-Inventry PUBLIC Myoporum



7 Non-Inventry PUBLIC Brazilian Pepper

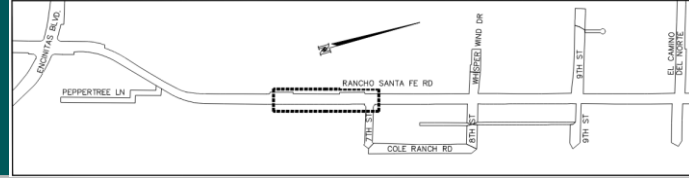


4637ETREE

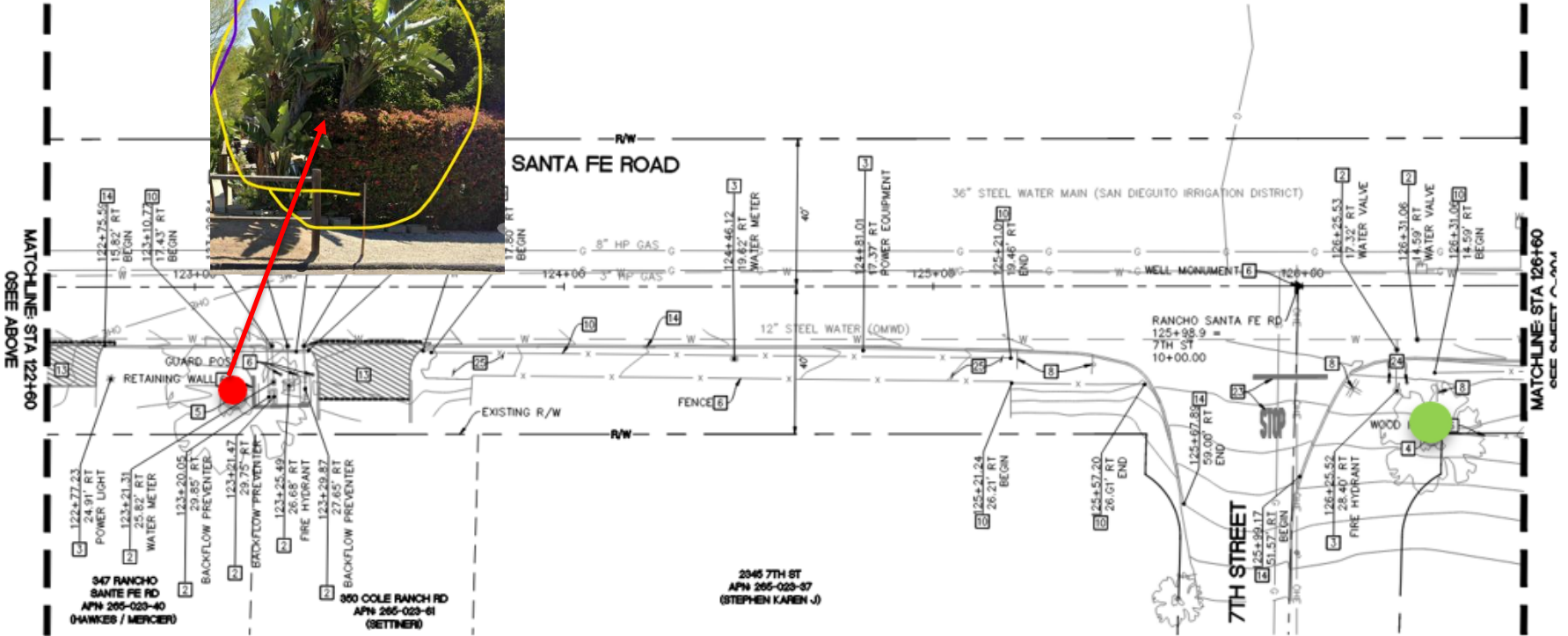
4636ETREE

Non-Inventry PUBLIC Palm

SHEET 3 OF 6

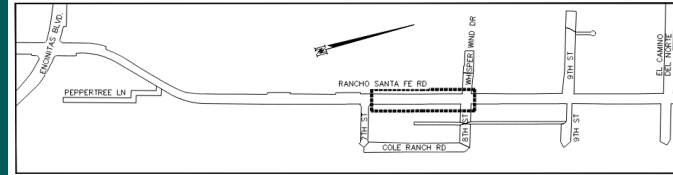


Giant Bird of Paradise



2045 7TH ST
 APN 205-023-37
 (STEPHEN KAREN J.)

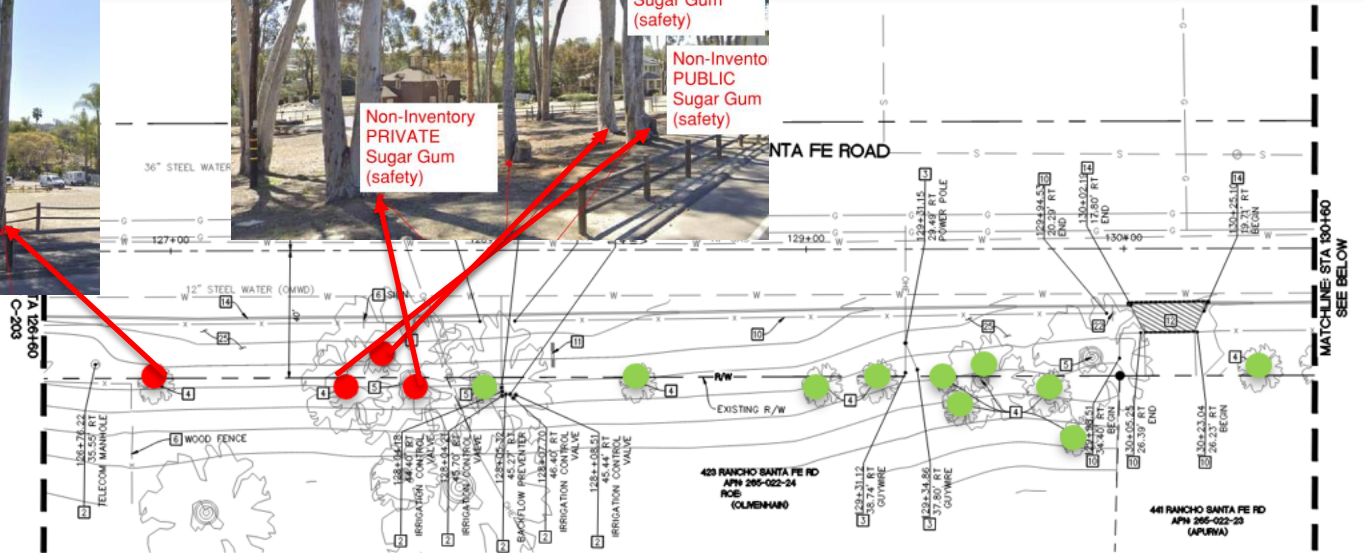
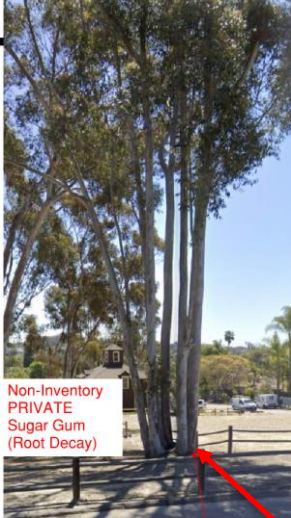
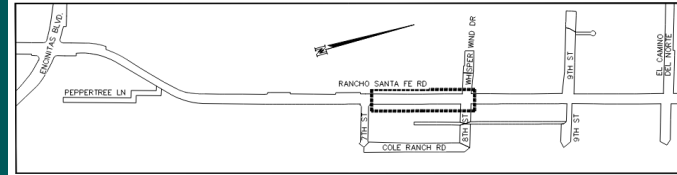
SHEET 4 OF 6 - SUMMARY



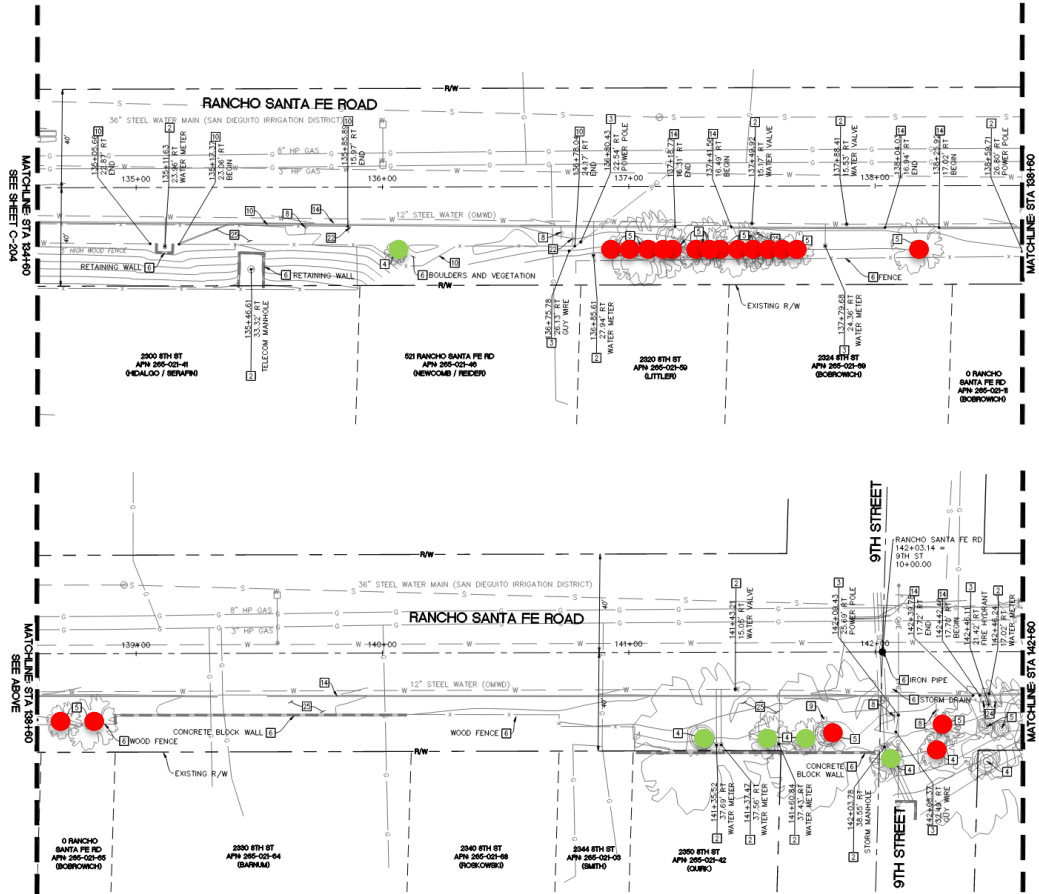
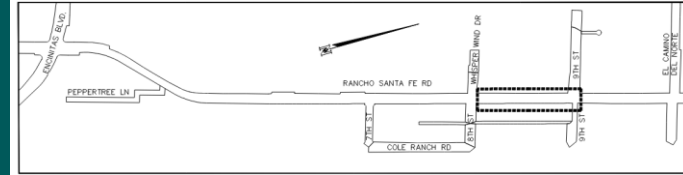
TREE TOTAL

- 4 Removed & Replaced Off-site**
- 4 sugar gums
- 1 non-inventory public, 3 non-inventory private
- 20 Protect in Place**
- 8 sugar gums, 7 olive trees, 5 unclassified
- 8 non-inventory private, 12 non-inventory public

SHEET 4 OF 6



SHEET 5 OF 6 - SUMMARY



TREE TOTAL

19 Removed & Replaced Off-site

6 Carolina Cherry, 7 Myoporum, 3 Afghan Pine, 3 Brazilian Pepper

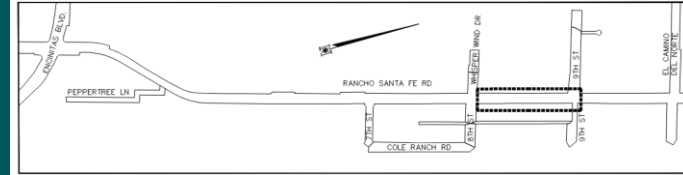
4659ETREE - 4654ETREE,
4652ETREE, 4663ETREE,
4666ETREE, 4665ETREE,
4672ETREE, 8 non-inventory public

5 Protect in Place

1 schinus molle, 4 brazilian pepper

4651ETREE, 4671ETREE,
4669ETREE, 4668ETREE & 1
non-inventory public

SHEET 5 OF 6



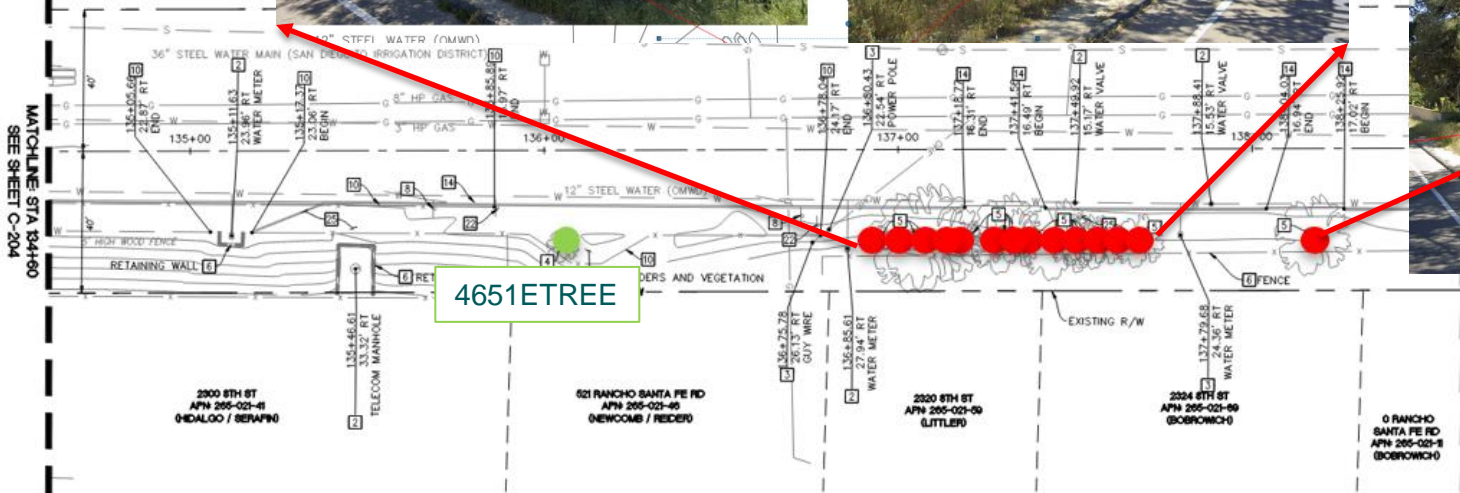
6 Non-inventory PUBLIC Carolina Cherry



4659ETREE
4658ETREE
4657ETREE
4656ETREE
4655ETREE
4654ETREE
4652ETREE



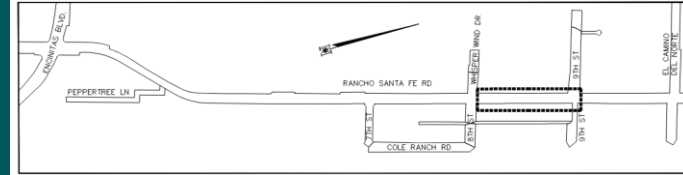
4663ETREE



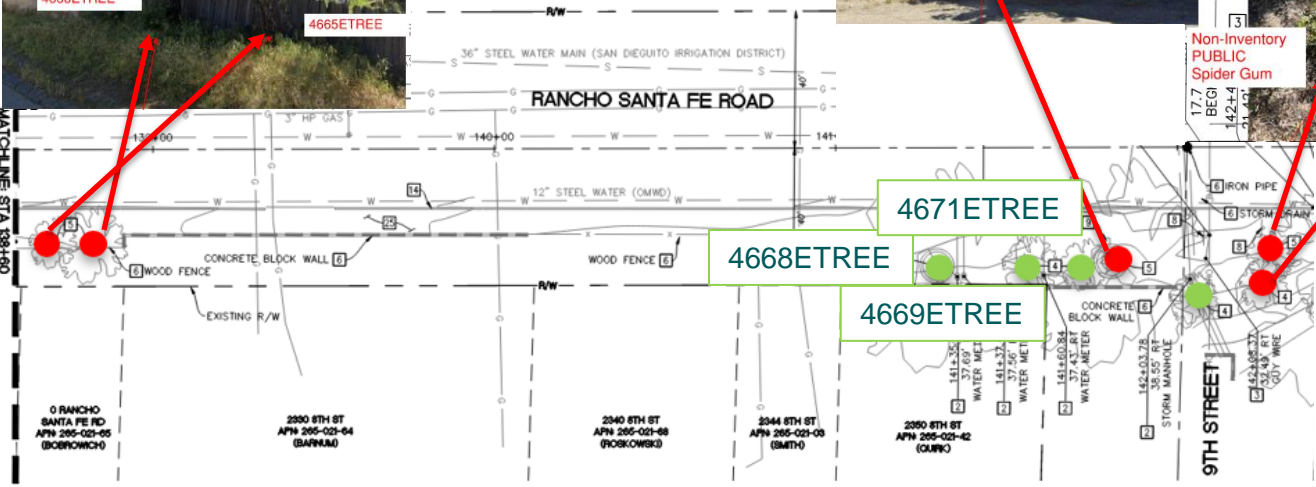
MATCHLINE STA 134+60
SEE SHEET C-204

4651ETREE

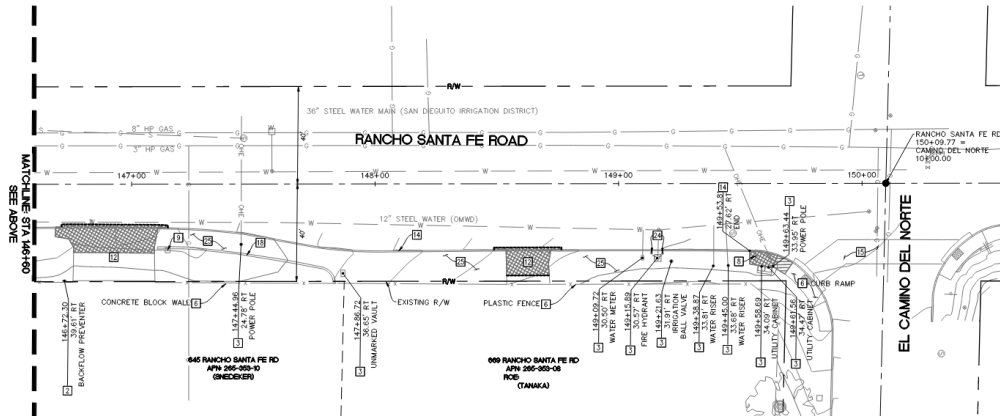
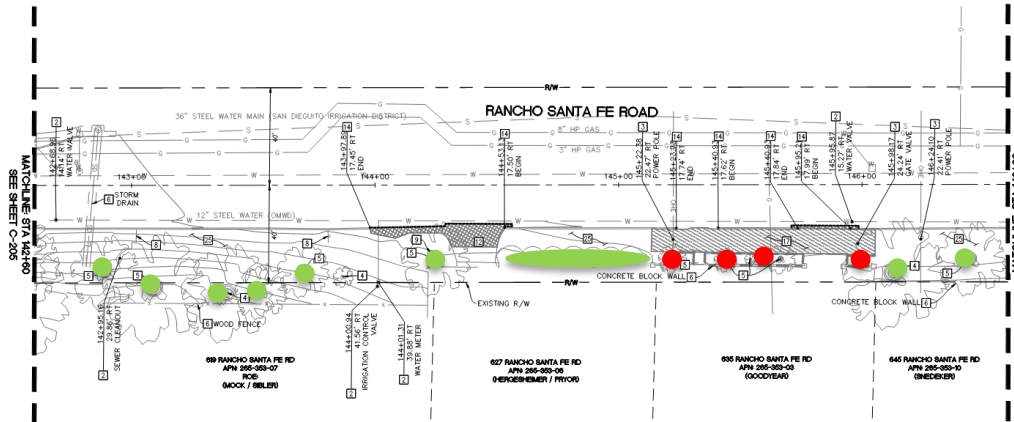
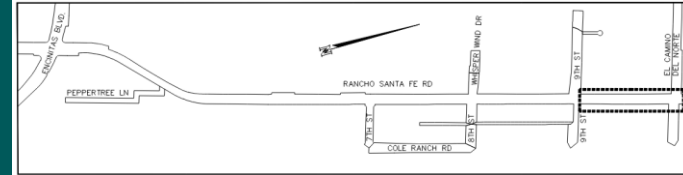
SHEET 5 OF 6



MATCHLINE STA 138+00
SEE ABOVE



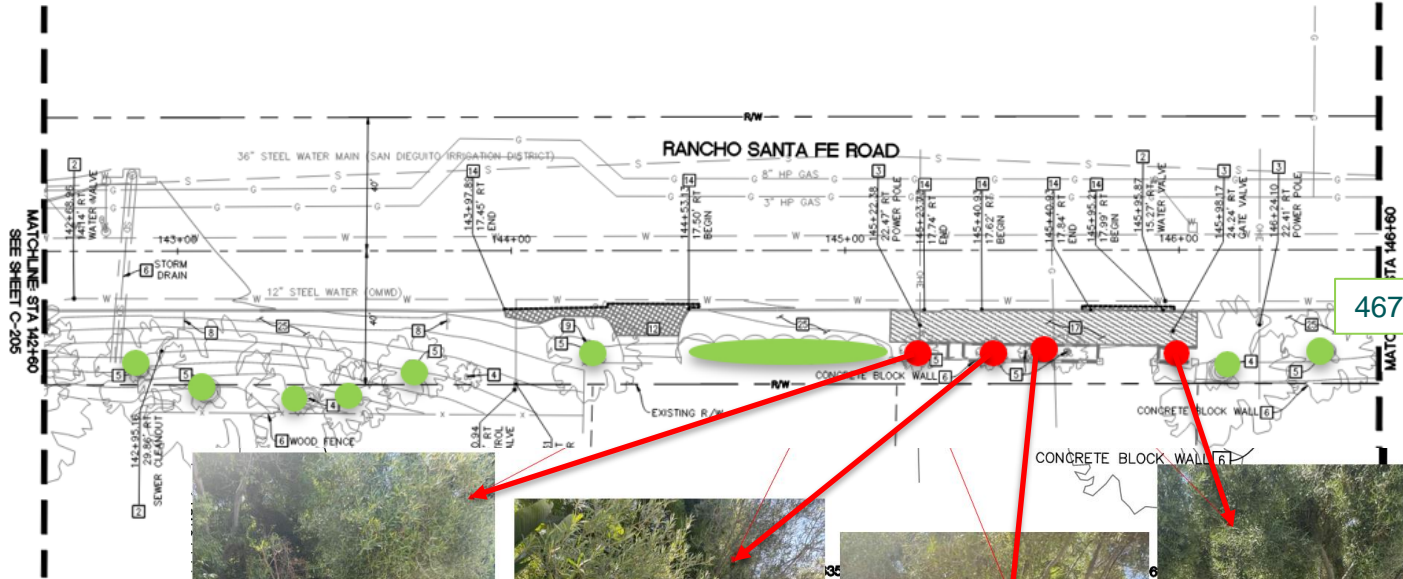
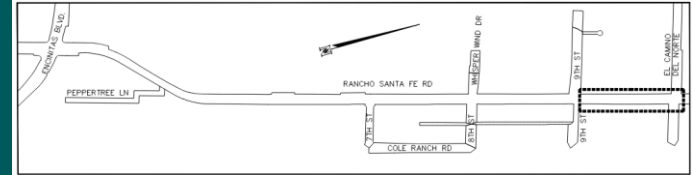
SHEET 6 OF 6 - SUMMARY



TREE TOTAL

- 4 Removed & Replaced Off-site**
- 4 Olive**
- 4 non-inventory public**
- 11 Protect in Place**
- 2 tipu, 6 spider gum, 3 fern pines**
- 4675ETREE, 7 non-inventory public, 3 non-inventory private**

SHEET 6 OF 6



4674ETREE



TREE PLANTING OVERVIEW

Considerations for Offsite Replacement

- Public Right of Way Constraints Post-Construction
- City of Encinitas Fire Department “Olivenhain Evacuation Route”

Identified Planting Zone

- Parks
 - ECP (10 trees)
 - Lot 15 Trails (12 trees)
 - Little Oaks Equestrian Park (5 trees)
- Nearby Right of Way Frontage
 - 38 trees



NATIVE AND DROUGHT TOLERANT TREES

- **Scrub Oak (*Quercus berberidifolia*)**

Plant Description



Plant Type
Tree, Shrub



Size
15 - 19.7 ft tall
15 ft wide



Form
Rounded



Growth Rate
Slow



Dormancy
Evergreen



Fragrance
None



Flower Color
Cream, Green,
Yellow, Brown



Flowering Season
Winter, Spring



PROJECT SCHEDULE

- **January 2025 - Planning Commission Hearing**
- **After approval, the goal is to fund & plant the new 65 trees to secure the mitigation sites for the project**
- **Construction funding has not been identified yet. Removal of existing trees will not occur until funding is allocated for construction**

QUESTIONS?

Ben Stryker, PE

Engineer II

bstryker@encinitasca.gov

760-943-2230