

4.12 PUBLIC SERVICES AND RECREATION

The environmental setting, regulatory framework, potential impacts, and mitigation measures concerning public services, facilities, and recreation are discussed in 2016 PEIR Section 4.12 and hereby incorporated by reference. The additions/changes to those analyses necessary to make the 2016 PEIR applicable to the revised Project are presented below.

This Section identifies existing environmental conditions in the affected area, identifies and analyzes the Project's potentially significant environmental impacts, and recommends measures to avoid/reduce construction and operational impacts. This Section specifically addresses the Project's potential impacts concerning fire protection service, police protection service, schools, library services, and recreation. Potential impacts associated with wildland fires are discussed in Section 4.7, *Hazards and Hazardous Materials*.

4.12.1 EXISTING ENVIRONMENTAL SETTING

2016 PEIR

The existing environmental setting concerning public services, facilities, and recreation is discussed in 2016 PEIR Section 4.12.1 (page 4.12-1) and the additions/changes necessary to make the 2016 PEIR applicable to the revised Project are presented below.

ADDITIONS/CHANGES SINCE 2016 PEIR

Fire and Emergency Services

The Encinitas Fire Department (EFD) operates six fire stations as shown in Figure 4.12-1, *Existing Fire Stations*. In 2016, the EFD employed 55 firefighters, covered 19.6 square miles, responded to 6,611 calls, and the average response time was 4 minutes and 42 seconds.

4.12.2 REGULATORY FRAMEWORK

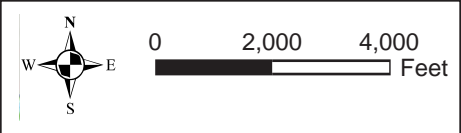
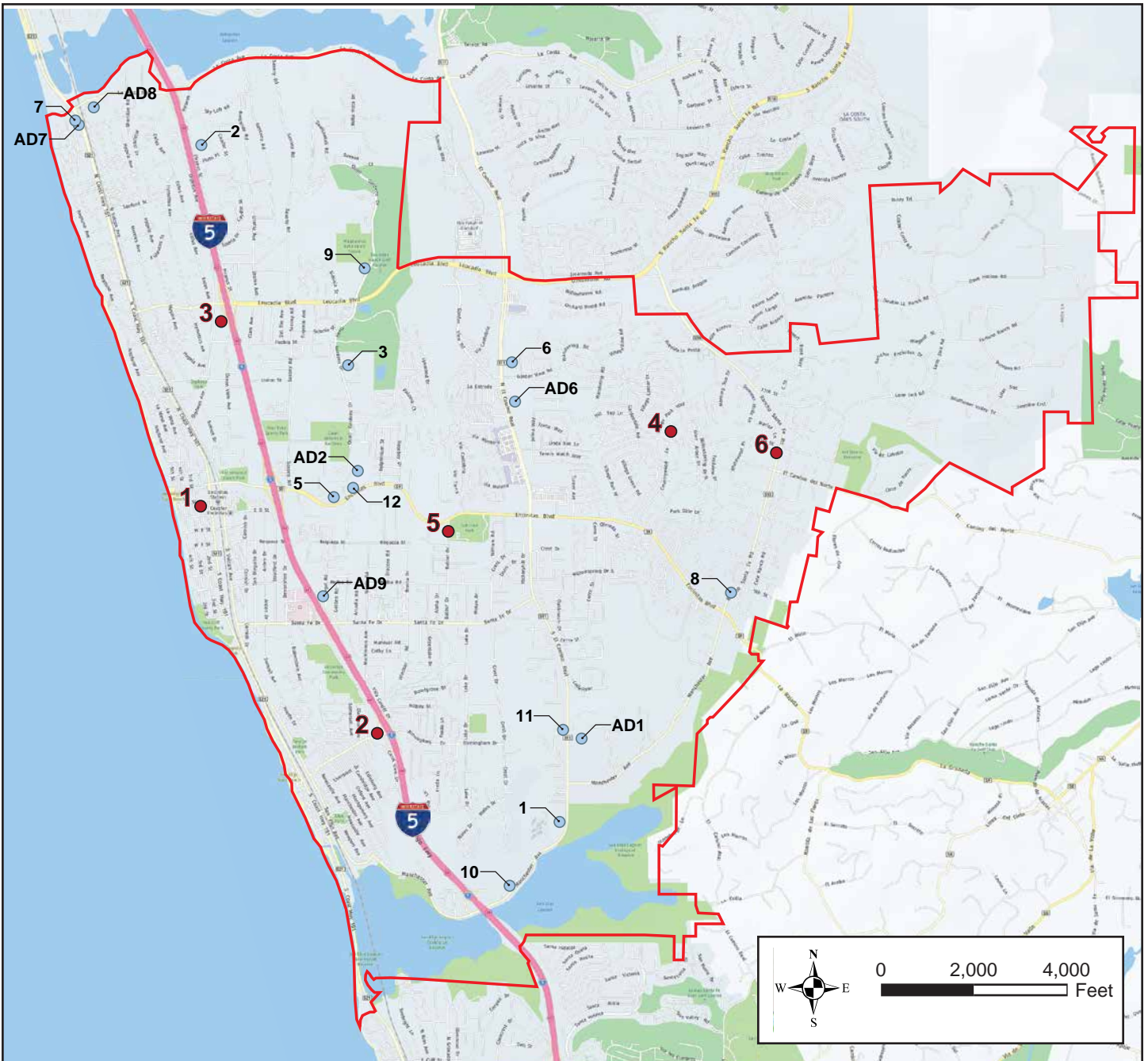
2016 PEIR

The regulatory framework concerning public services and recreation is discussed in 2016 PEIR Section 4.12.2 (page 4.12-2) and the additions/changes necessary to make the 2016 PEIR applicable to the revised Project are presented below.

ADDITIONS/CHANGES SINCE 2016 PEIR

Schools

Table 4.12-1, *School Capacity*, lists the schools serving the City and provides their 2017-2018 enrollment, maximum enrollment capacity, and future enrollment capacity. Figure 4.12-2, *School District Boundaries*, depicts the school district boundaries.

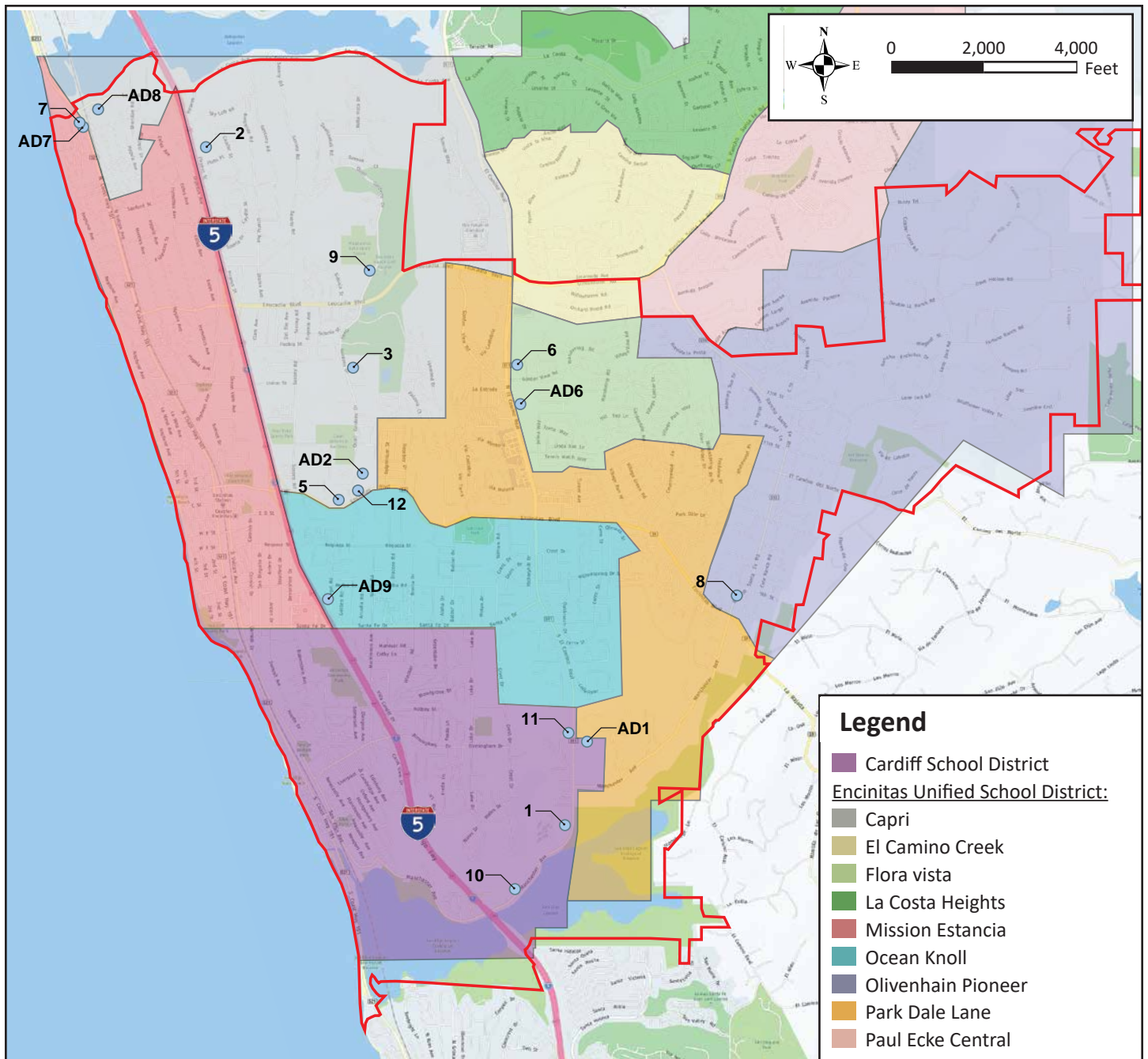


Legend

- Encinitas Fire Stations
- Candidate Sites
- City Boundary

Source: Yahoo Maps.





Source: Encinitas Unified School District, web <<http://www.eusd.net/eusd-boundary-map/>>.





TABLE 4.12-1: SCHOOL CAPACITY

School	School District	2017/18 Enrollment	Total Maximum Enrollment Capacity	Future Enrollment Capacity
Capri Elementary School	EUSD	710	773	773
El Camino Creek Elementary School	EUSD	601	670	670
Flora Vista Elementary School	EUSD	460	536	536
La Costa Heights Elementary School	EUSD	690	712	712
Mission Estancia Elementary School	EUSD	529	535	535
Ocean Knoll Elementary School	EUSD	650	687	687
Olivenhain Pioneer Elementary School	EUSD	595	618	618
Park Dale Lane Elementary School	EUSD	464	508	508
Paul Ecke Central Elementary School	EUSD	646	694	694
Cardiff Elementary School	CSD	347	400	440
Ada W. Harris Elementary School	CSD	359	480	480
Oak Crest Middle School	SDUHSD	674	1140	466
Diegueño Middle School	SDUHSD	897	1335	438
Canyon Crest Academy	SDUHSD	2496	2716	220
La Costa Canyon High School	SDUHSD	1833	3000	1167
San Dieguito High School Academy	SDUHSD	1813	1815	2
Sunset High School	SDUHSD	108	290	182
EUSD = Encinitas Unified School District; CSD = Cardiff School District; and SDUHSD = San Dieguito Union High School District				
Sources: Shackelford, A. Encinitas Unified School District. (2018, April 26). Email correspondence. Vinson, J. and Parker, J. Cardiff School District. (2018, April 23). Email correspondence. Young, D. San Dieguito Union High School District. (2018, April 19). Email correspondence.				

SENATE BILL (SB) 328

Senate Bill (SB) 328 created a change in attendance times by requiring a school day for middle schools and high schools, including middle schools and high schools operated as charter schools, to begin no earlier than 8:30 a.m.¹

4.12.3 SIGNIFICANCE DETERMINATION THRESHOLDS

Consistent with the 2016 PEIR and in substantial conformance with CEQA Guidelines Appendix G, Impacts related to public services and recreation would be significant if the Project would:

- Promote growth patterns resulting in the need for and/or provision of new or physically altered public facilities (i.e., fire protection/emergency services, police protection, schools, or libraries) in order to maintain service ratios, response times, or other performance objectives and the construction of which could cause significant environmental impacts (see Issue 1a-d),

¹ California Legislative Information. Senate Bill 328. Accessed from https://leginfo.legislature.ca.gov/faces/billNavClient.xhtml?bill_id=201720180SB328. On May 3, 2018.

- Increase the use of existing neighborhood and regional parks or other recreational facilities, such that substantial physical deterioration of the facility would occur or be accelerated (see Issue 2), or
- Necessitate the constriction or expansion of recreational facilities in order to maintain performance objectives and thereby would result in an adverse physical effect on the environment (see Issue 3).

4.12.4 IMPACTS AND MITIGATION MEASURES

4.12.4 - Issue 1a: Fire Service

Would the Project promote growth patterns resulting in the need for and/or provision of new or physically altered fire emergency facilities in order to maintain service ratios, response times, or other performance objectives and the construction of which could cause significant environmental impacts?

IMPACTS:

2016 PEIR

The potential impacts concerning public services and recreation/fire service are discussed in 2016 PEIR Section 4.12.5 (Issue 1a, page 4.12-16). The 2016 PEIR concluded that future development would not directly or indirectly conflict with City policy or regulation concerning the protection of fire services. The HEU did not propose immediate construction of new housing sites; rather it provided buildout capacity of selected sites for future development, which would have resulted in an increase in population throughout the City. HEU buildout would occur over 20+ years and would be required to comply with applicable Encinitas General Plan (EGP) goals and policies. Although the HEU did not immediately increase population, it was assumed that future development would increase the demand on existing fire and emergency services. Therefore, all future development would have been required to provide a will-serve letter from the EFD in conjunction with their application to ensure adequate services (and utilities) would be available at the time development is proposed. Additionally, Encinitas Municipal Code (EMC) Chapter 23.92 requires payment of fire mitigation fees as a condition of approval of each individual development project. Once collected, fees are used to provide capital facilities and equipment for fire prevention and control, and to include station construction, station expansion and fire apparatus acquisition (EMC §23.92.040). Therefore, due to the program-level analysis of the HEU, the 2016 PEIR concluded no immediate impacts would have occurred. However, each additional development project would have been required to be analyzed on a project-by-project basis. The analysis concluded that at the program-level of review, the HEU would not result in a need for expanded or newly constructed facilities, and impacts associated with fire/emergency services would be less than significant. Should construction of new facilities be required in the future, each would undergo site-specific environmental analysis, as applicable.

No additions/changes are necessary to make the 2016 PEIR applicable to the revised Project.

REVISED PROJECT

No changes to the 2016 PEIR's findings are required.

GENERAL PLAN POLICIES AND MITIGATION MEASURES:

GENERAL PLAN POLICIES:

Refer to Appendix E, *Relevant General Plan Policies*, for the full text of these policies.

- PSE Policy 1.8
- PSE Policy 1.9
- PSE Policy 1.10
- PSE Policy 1.11
- PSE Policy 1.14
- PSE Policy 1.16

MITIGATION MEASURES:

No mitigation measures concerning fire services were identified in 2016 PEIR Section 4.12 and none are necessary for the Project.

LEVEL OF SIGNIFICANCE: Less Than Significant Impact

4.12.4 - Issue 1b: Police Service

Would the Project promote growth patterns resulting in the need for and/or provision of new or physically altered police facilities in order to maintain service ratios, response times, or other performance objectives and the construction of which could cause significant environmental impacts?

IMPACTS:

2016 PEIR

The potential impacts concerning public services and recreation/police services are discussed in 2016 PEIR Section 4.12.6 (Issue 1b, page 4.12-17). The 2016 PEIR concluded that future housing development would not directly or indirectly conflict with City policy or regulation concerning police protection services. The HEU did not propose immediate construction of new housing sites; rather it provided buildout capacity of selected sites for future development; which would have resulted in an increase in population throughout the City. HEU buildout would have occurred over 20+ years and would have been required to comply with applicable EGP goals and policies. Although the HEU does not immediately increase population, it was assumed that future development would increase the demand on existing police services. However, each additional development project would have been required to be analyzed on a project-by-project basis. The analysis concluded that at the program-level of review, the HEU would not result in a need for expanded or newly constructed facilities, and impacts associated with police services would be less than significant. Should construction of new facilities be required in the future, each would undergo site-specific environmental analysis, as applicable.

No additions/changes are necessary to make the 2016 PEIR applicable to the revised Project are presented below.

REVISED PROJECT

No additions/changes to the 2016 PEIR's findings are necessary.

GENERAL PLAN POLICIES AND MITIGATION MEASURES:

GENERAL PLAN POLICIES:

Refer to Appendix E, *Relevant General Plan Policies*, for the full text of these policies.

- PSE Policy 1.9
- PSE Policy 1.10
- PSE Policy 1.11
- PSE Policy 1.14
- PSE Policy 1.16

MITIGATION MEASURES:

No mitigation measures concerning police services were identified in 2016 PEIR Section 4.12 and none are necessary for the Project.

LEVEL OF SIGNIFICANCE: Less Than Significant Impact

4.12.4 - Issue 1c: Schools

Would the Project promote growth patterns resulting in the need for and/or provision of new or physically altered school facilities in order to maintain service ratios, response times, or other performance objectives and the construction of which could cause significant environmental impacts?

IMPACTS:

2016 PEIR

The potential impacts concerning public services and recreation/schools are discussed in 2016 PEIR Section 4.12.7 (Issue 1c, page 4.12-18). The 2016 PEIR concluded that future development would not directly or indirectly conflict with City policy or regulation concerning schools. The HEU did not propose immediate construction of new housing sites; rather it provided buildout capacity of selected sites for future development; which would have resulted in an increase in population throughout the City. HEU buildout would have occurred over a period of 20+ years and be required to comply with applicable EGP goals and policies. Although the HEU did not immediately increase population, it was assumed that future development would increase the demand on school facilities. As shown in Tables 4.12-6 through 4.12-8, buildout of the housing sites under each strategy would result in an increase in students within each school district. The analysis concluded the school districts would have been able to accommodate student generation under any of the proposed strategies. However, each additional development project would have been required to be analyzed on a project-by-project basis.

New development would be subject to payment of school impact fees in accordance with SB 50. Pursuant to §65995(3)(h) of the California Government Code (SB 50), “payment of statutory fees is deemed to be full and complete mitigation of the impacts of any legislative or adjudicative act, or both, involving, but not limited to, the planning, use or development of real property...” Future projects would be required to ensure adequate school services are available. Therefore, at the program-level of review, the 2016 PEIR concluded that HEU buildout would not result in a need for expanded or newly constructed facilities, and impacts associated with schools would have been less than significant. Should construction of new facilities be required in the future, each would undergo site-specific environmental analysis, as applicable.

The additions/changes necessary to make the 2016 PEIR applicable to the revised Project are presented below.

REVISED PROJECT

Table 4.12-2, *Project Student Generation*, provides an estimate of the Project's student generation within each school district. Capacity availability at each school was calculated by subtracting total maximum enrollment capacity from current enrollment. As indicated in Table 4.12-2, the CSD and SDUHSD would have sufficient capacity to accommodate the Project's student generation, and the EUSD would have a capacity shortfall of approximately 431 students. However, the Project does not propose immediate construction of new housing sites; rather it provides buildout capacity of selected sites for future development. HEU buildout is anticipated to occur over 20+ years, and each future development would require analysis on a project-by-project basis, as well as compliance with applicable EGP goals and policies and payment of school impact fees pursuant to SB 50. Payment of fees would be considered full and complete mitigation for each development's impacts. Payment of fees is intended to ensure adequate school services and space are available. Future projects would be required to ensure adequate school services are available. Therefore, at the program-level of review, the Project would not require expanded or newly constructed school facilities and impacts would be less than significant.

GENERAL PLAN POLICIES AND MITIGATION MEASURES:

GENERAL PLAN POLICIES:

Refer to Appendix E, *Relevant General Plan Policies*, for the full text of these policies.

MITIGATION MEASURES:

No mitigation measures concerning schools were identified in 2016 PEIR Section 4.12 and none are necessary for the Project.

LEVEL OF SIGNIFICANCE: Less Than Significant Impact



TABLE 4.12-2: ESTIMATED STUDENT GENERATION							
Candidate Site	Proposed Residential Yield (DU)	EUSD	SDUHSD	CSD	Proposed Student Generation ¹		
					EUSD	SDUHSD	CSD
C3-S01	60		X	X		10	10
C1-S02	208	X	X		85	36	
C1-S03	228	X	X		93	39	
C2-S05	143	X	X		58	24	
C1-S07	89	X	X		36	15	
C4-SAD01	72		X	X		12	12
C2-SAD02	272	X	X		111	47	
C1-S09	296	X	X		121	51	
C3-S10	296		X	X		51	50
C4-S11	58		X	X		10	9
C2-S12	102	X	X		41	17	
C4-S06	88	X	X		36	15	
C5-S08	181	X	X		74	31	
C4-SAD06	188	X	X		77	32	
C2-SAD09	132	X	X		54	22	
C1-SAD07	24	X	X		9	4	
C1-SAD08	60	X	X		24	10	
Total	2,497						1,326
Total Estimated Student Generation					819	426	81
Available Capacity					388	2,475	174
Sufficient Capacity					No	Yes	Yes
Estimated Capacity Shortfall					-431	2,049	93
¹ Generation Rates: EUSD = 0.41/dwelling unit; SDUHSD = 0.174/dwelling unit; CSD = 0.17/dwelling unit EUSD = Encinitas Unified School District; SDUHSD = San Dieguito Union High School District; and CSD = Cardiff School District							
Sources: Shackelford, A. Encinitas Unified School District. (2018, April 26). Email correspondence. Vinson, J. and Parker, J. Cardiff School District. (2018, April 23). Email correspondence. Young, D. San Dieguito Union High School District. (2018, April 19). Email correspondence.							

4.12.4 - Issue 1d: Library Services

Would the Project promote growth patterns resulting in the need for and/or provision of new or physically altered library facilities in order to maintain service ratios, response times, or other performance objectives and the construction of which could cause significant environmental impacts?

IMPACTS:

2016 PEIR

The potential impacts concerning public services and recreation/library services are discussed in 2016 PEIR Section 4.12.8 (Issue 1d, page 4.12-21). At the time of the 2016 PEIR, the County of San Diego operated 33 branches and two mobile library units. The HEU did not propose immediate new construction for specific housing sites; rather it provided capacity for future development consistent with State Housing Element Law. HEU buildout would have increased population therefore, increasing the demand for library services. The County of San Diego Library system is responsible for the maintenance and library improvements to meet future library service's needs. The Library system has developed a Strategic Plan that identifies goals and objectives including financial management and fundraising strategies to maintain and enhance library facilities to meet future demands. The 2016 PEIR concluded that future housing development would not directly or indirectly conflict with City policy or regulation concerning library services.

No additions/changes are necessary to make the 2016 PEIR applicable to the revised Project.

REVISED PROJECT

No additions/changes to the 2016 PEIR's findings are necessary.

GENERAL PLAN POLICIES AND MITIGATION MEASURES:

GENERAL PLAN POLICIES:

Refer to Appendix E, *Relevant General Plan Policies*, for the full text of these policies.

MITIGATION MEASURES:

No mitigation measures concerning police services were identified in 2016 PEIR Section 4.12 and none are necessary for the Project.

LEVEL OF SIGNIFICANCE: Less Than Significant Impact

4.12.4 - Issue 2 and 3: Recreation

Would the Project have substantial adverse physical impacts associated with the provision of, or the need for, new or physically altered park and recreation facilities, the construction of which could cause significant environmental impacts, in order to maintain acceptable service ratios, response times, or other performance objectives associated with recreation?

IMPACTS:

2016 PEIR

The potential impacts concerning public services and recreation are discussed in 2016 PEIR Section 4.12.9 (Issue 2 and 3, page 4.12-22). It is City policy (Recreation Element Policy RE-1.5) that a minimum of 15 acres of recreational land be provided per 1,000 population. The 2016 PEIR concluded, that the City's 1,330.6 acres of parks and recreational space would meet the demands under all housing strategies. Analysis concluded that HEU would not result in a need for expanded or newly constructed recreational facilities.

The additions/changes necessary to make the 2016 PEIR applicable to the revised Project are presented below.

REVISED PROJECT

As shown in Table 4.11-1, *Project Population Forecast*, the City's population would grow to approximately 69,408 persons with implementation of the revised Project. Based on the City's policy to provide a minimum of 15 acres of recreational land per 1,000 population, the City's demand for parks and recreational space (inclusive of the Project) would total approximately 1,041 acres. Therefore, the City's existing 1,330.6 acres of parks and recreational space would meet the Project's demand and a less than significant impact would occur in this regard.

GENERAL PLAN POLICIES AND MITIGATION MEASURES:

GENERAL PLAN POLICIES:

Refer to Appendix E, *Relevant General Plan Policies*, for the full text of these policies.

- RE Policy 1.2
- RE Policy 1.3
- RE Policy 1.5
- RE Policy 1.6
- RE Policy 1.7
- RE Policy 1.9
- RE Policy 1.11
- RE Policy 4.3

MITIGATION MEASURES:

No mitigation measures concerning public services and recreation were identified in 2016 PEIR Section 4.12.9 and none are necessary for the revised Project.

LEVEL OF SIGNIFICANCE: Less Than Significant Impact

4.12.5 SIGNIFICANT UNAVOIDABLE IMPACTS

No significant unavoidable impacts concerning public services and recreation have been identified following compliance with the established regulatory framework.

4.12.6 SOURCES CITED

California Legislative Information. Senate Bill 328. Accessed from https://leginfo.legislature.ca.gov/faces/billNavClient.xhtml?bill_id=201720180SB328. On May 3, 2018.

Department of Finance. E-5 Population and Housing Estimates for Cities, Counties, and the State, January 2011-2018, with 2010 Benchmark. Accessed from <http://www.dof.ca.gov/Forecasting/Demographics/Estimates/E-5/> May 3, 2018.

Shackelford, A. Encinitas Unified School District. (2018, April 26). Email correspondence.

Vinson, J. and Parker, J. Cardiff School District. (2018, April 23). Email correspondence.

Young, D. San Dieguito Union High School District. (2018, April 19). Email correspondence.