

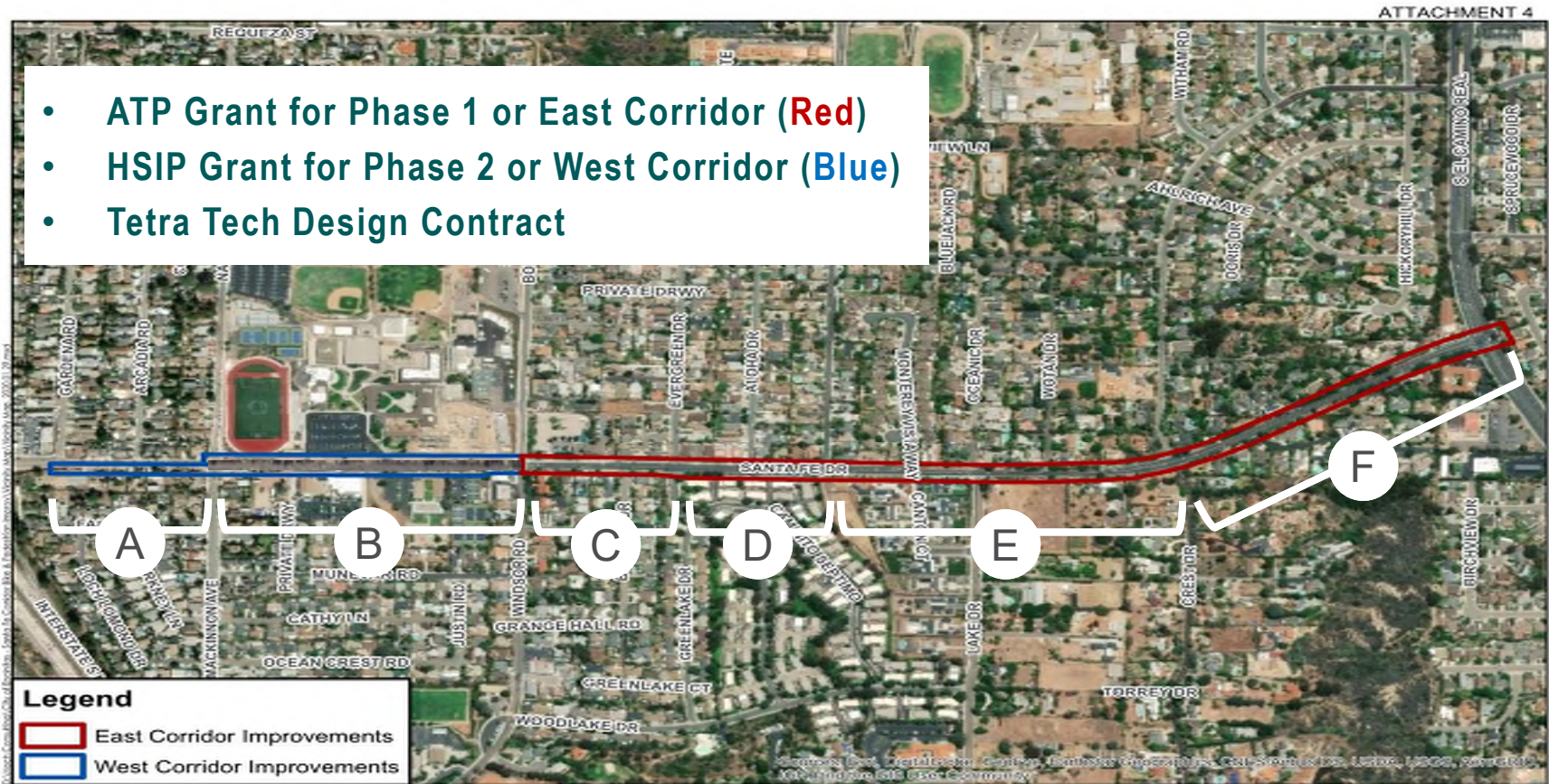
# Santa Fe Drive Corridor Improvements CPP Meeting

March 25, 2021



# Project Overview

- ATP Grant for Phase 1 or East Corridor (Red)
- HSIP Grant for Phase 2 or West Corridor (Blue)
- Tetra Tech Design Contract



Santa Fe Drive Corridor Improvements



Date of Exhibit: 1/29/2020

# Project Overview



**Goal:** Create a consistent complete street corridor for 1.25 miles of Santa Fe Drive

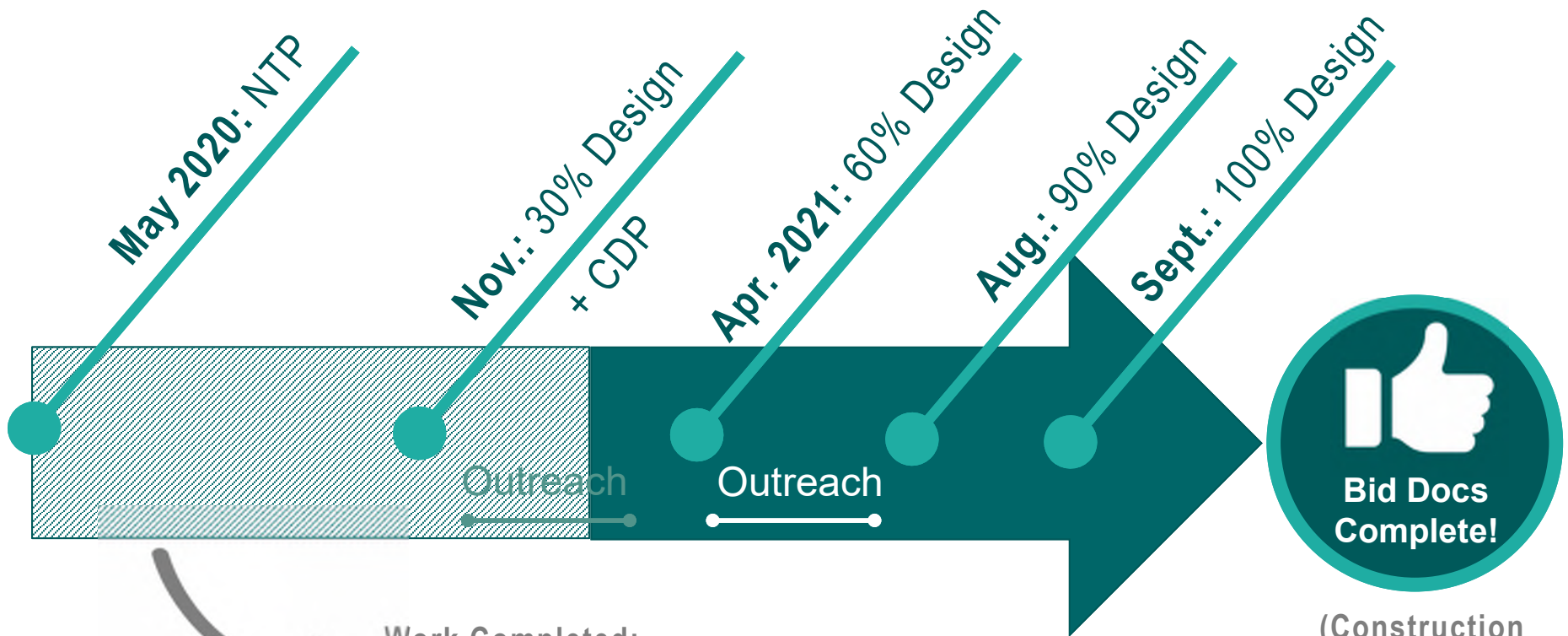
- Intersections:** 14 (4 signalized)
- Right of Way Widths:** Varies from 60' to 138' (78' variation)
- Improved Road Widths:** Varies from 35' to 100' (65' variation); narrowest lane = 9'
- Driveways:** 21 north side 23 south side = 44
- Crosswalks:** 7 pairs (North/South); 8 pairs (East/West)
- Recently completed Caltrans upgrades at I-5**
- Limited current active transportation opportunities**

# Special Corridor Considerations



- Separated bikeways where possible
- Bus stop across from SDA High School
- Pedestrian Signal & Crossing near SDA High School (HSIP Grant)
- Intersection Improvements of Santa Fe Drive & Crest Drive
- Plan is to have Green Street features for Storm Water Compliance
- Connection to schools should be a focus

# Project Timeline



Work Completed:

Surveys/utilities, Identification of conflicts and opportunities, PIA Map, Option layouts, Initial storm water evaluation, Internal coordination, Hydrology Study, 30% Design, Focus Groups



# Mobility Concepts for Bike/Ped



**Class 1: Multi-use Path**



**Class 2: Buffered Bike Lane**










**Class 4: One-way Protected Bike Facility (Cycle Track)**



**Class 4: Two-way Protected Bike Facility (Cycle Track)**

# Water Quality / Stormwater Quality Options

SANTA FE DRIVE DRAINAGE, STORMWATER, AND PARKWAY TREATMENTS		CycleTrack Barrier	Permeable Gutter	Permeable Parking Apron	Curb Inlets	Rock Mulch Only	Bio-swale Plant Material & Soil	Small Parkway Swales	Large Parkway Swales	Solid Drainage Pipe	Perforated Drainage Pipe	Basins with Filters	Silva Cells	Sample Images
<b>TYPE 1</b>	Permeable gutter and transmission		X								X	X		
<b>TYPE 2</b>	Permeable gutter, permeable parking lane and transmission			X							X			
<b>TYPE 3</b>	2' wide cycle track buffer with drainage input and transmission	X			X	X				X				
<b>TYPE 4</b>	3' wide bioswale	X			X		X				X			
<b>TYPE 5</b>	4' wide bioswale with small trees	X			X		X				X			
<b>TYPE 6</b>	6' wide parkway strip	X			X				X		X			
<b>TYPE 7</b>	Continuous paved with tree grates & silva cells	X	X		X				X		X	X		

# Raised Curbs with Rock Mulches, Boulders & Plantings



Constrained Conditions (less than 4' planter area)



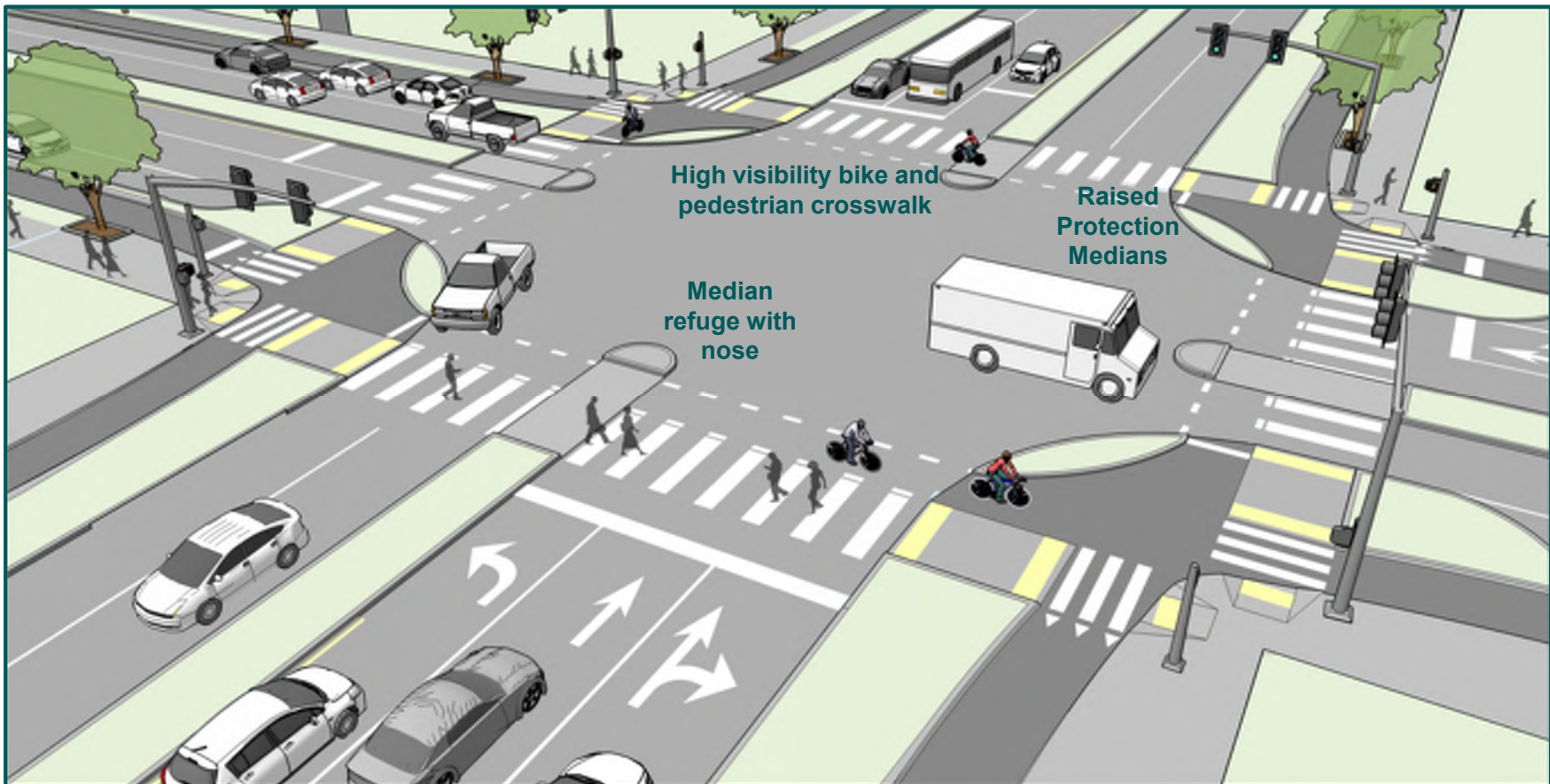
Wider Conditions (> 4' planter area)



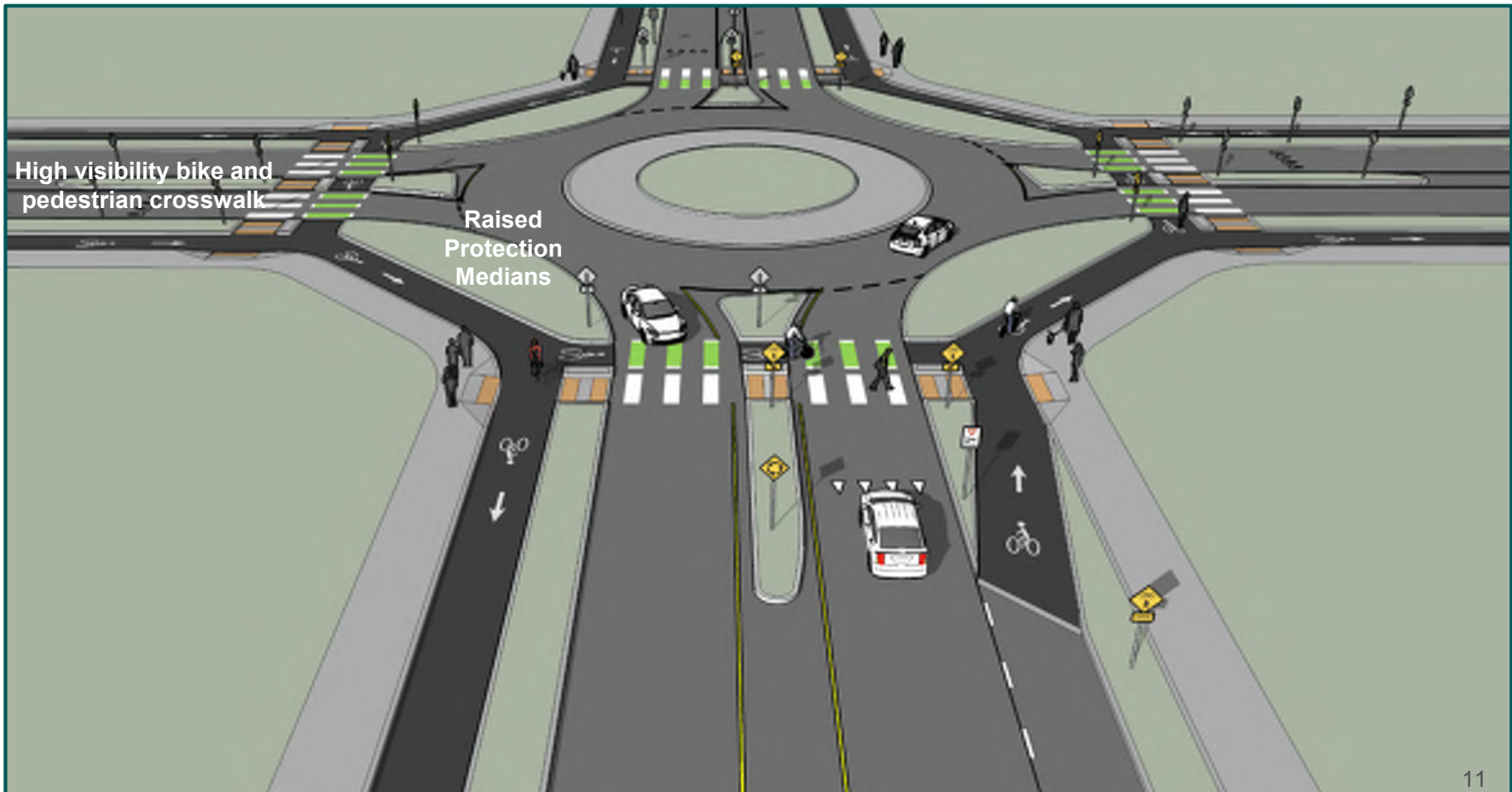
# Recommendation for Mid-block Crossings



# Protected Intersection



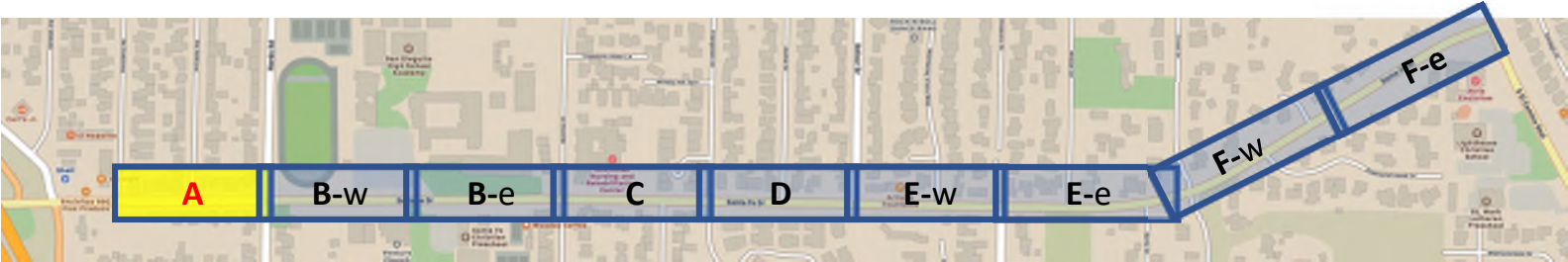
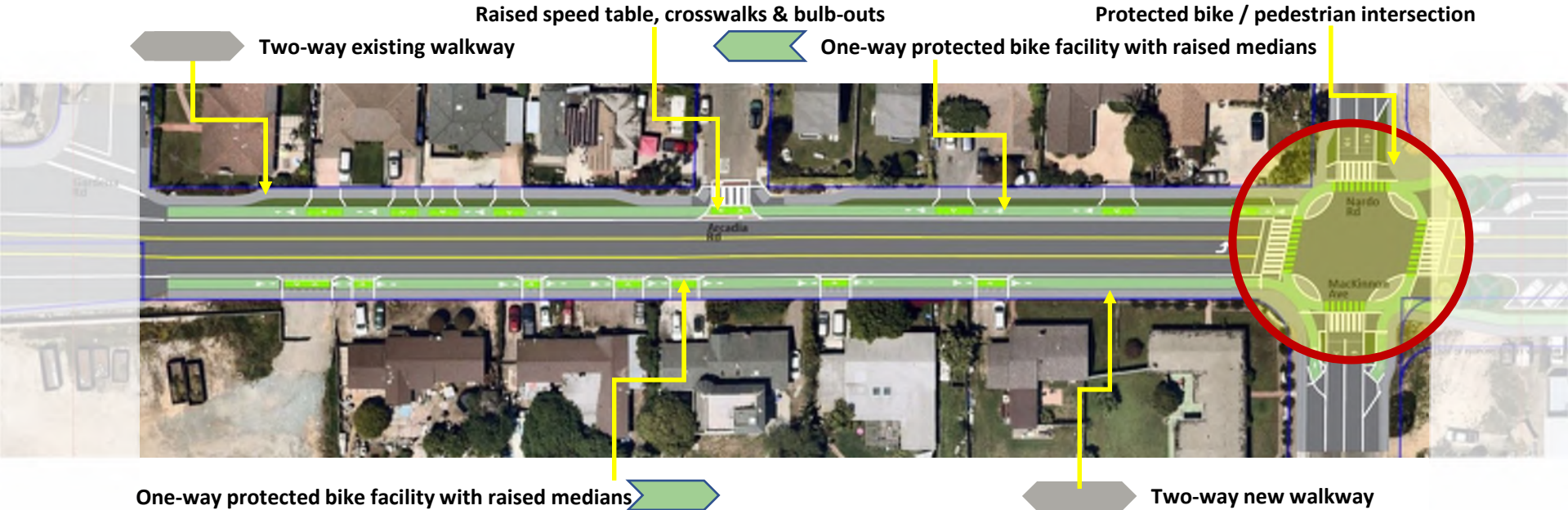
# Roundabout at Crest: Bike/Ped. Options



# Example Driveways

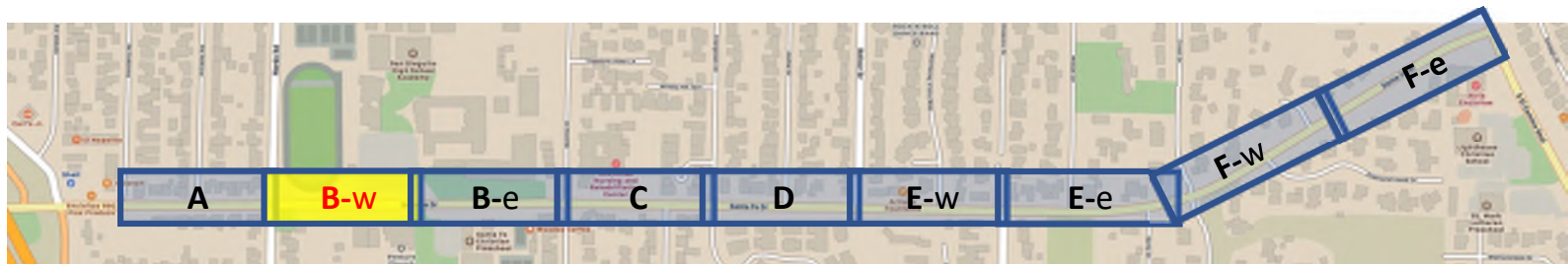
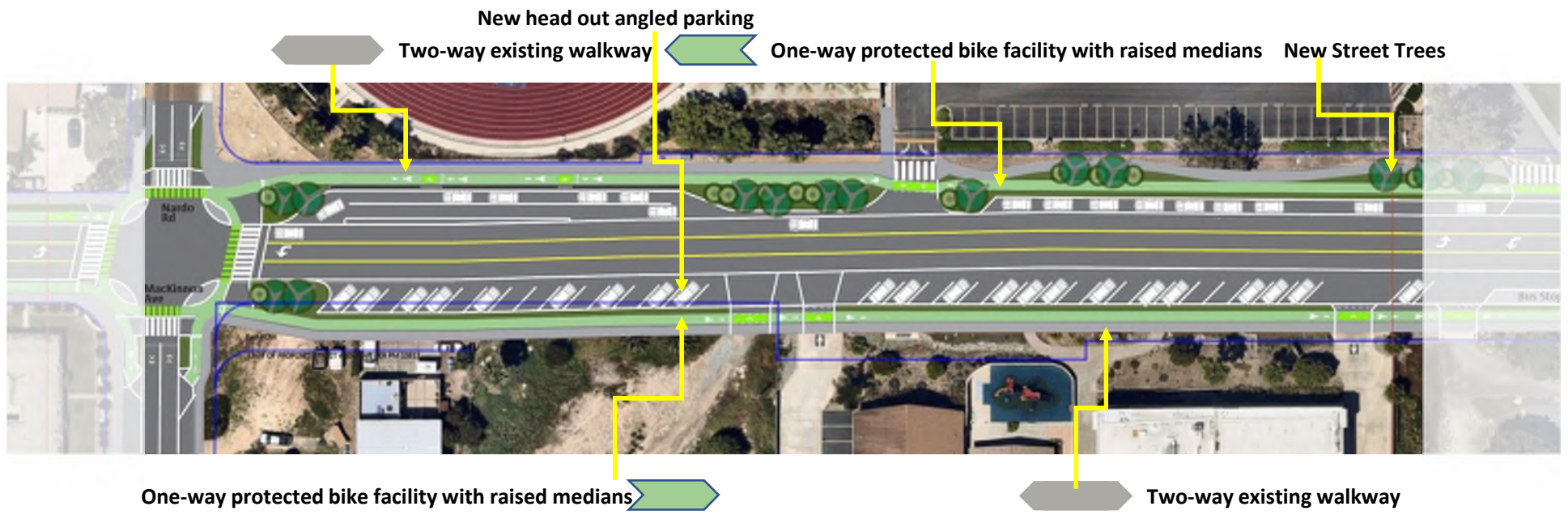


# Segment A (Gardena to Nardo/MacKinnon Ave.)



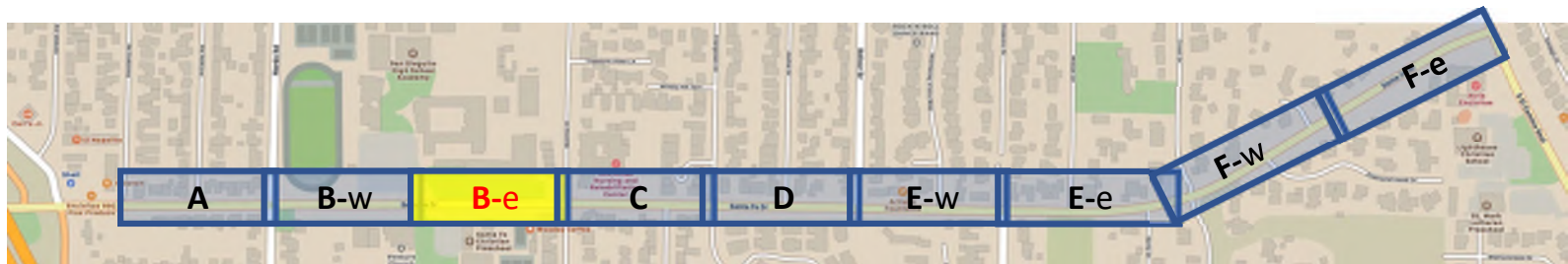
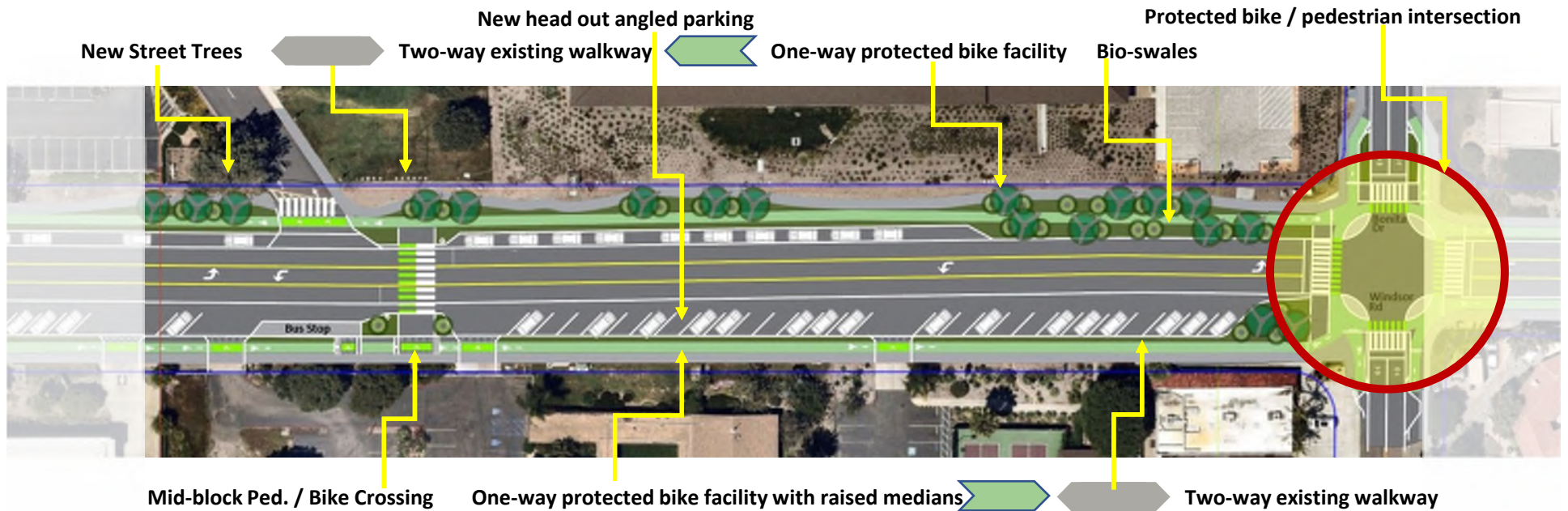
Parking Spaces = No change to available spaces 13

## Segment B-West (Nardo/MacKinnon Ave. ½ way to Bonita)



Parking Spaces = 42 new spaces 14

## Segment B (1/2 way to Nardo/MacKinnon Ave. to Bonita)

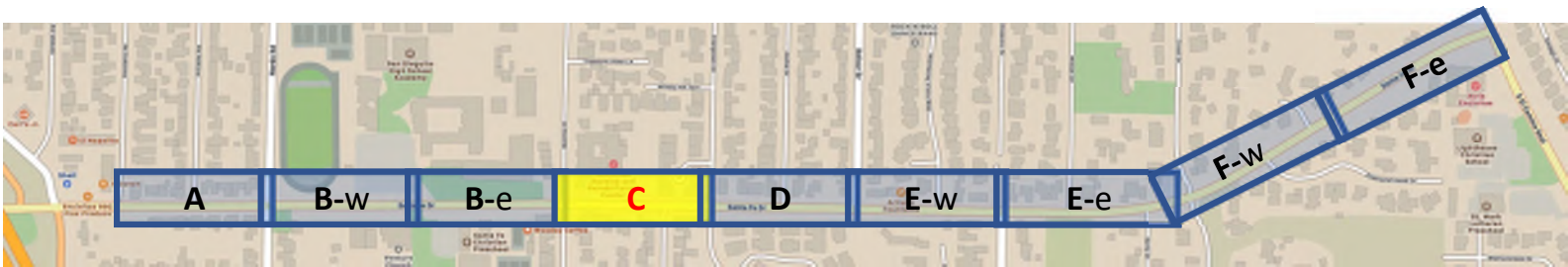
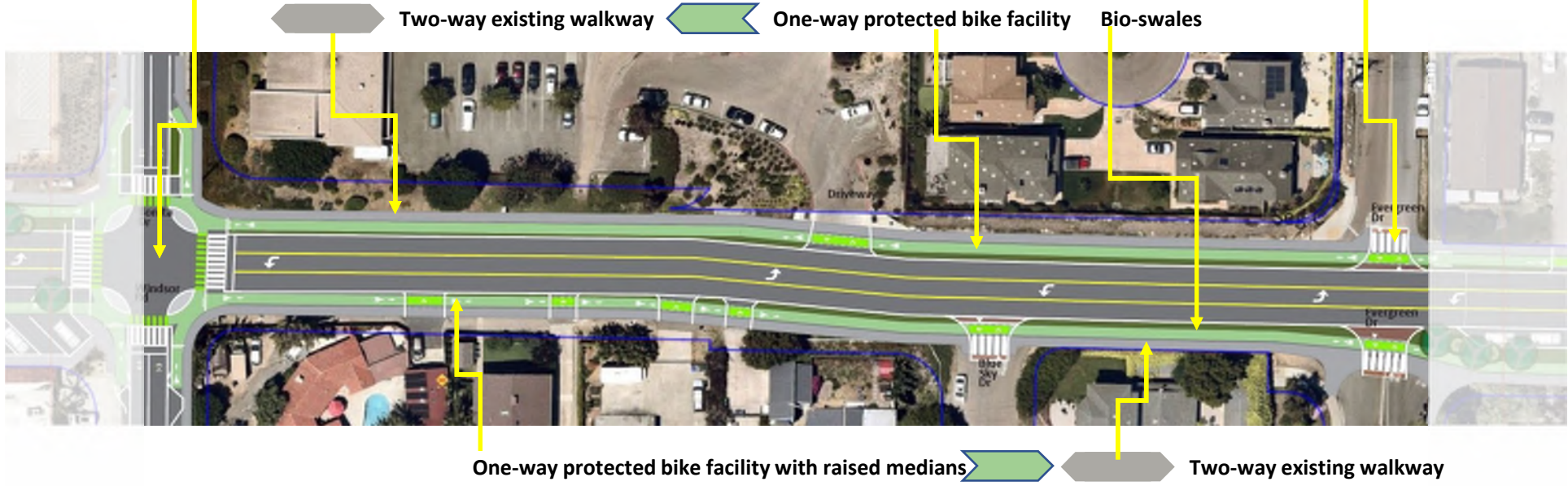


Parking Spaces = 4 new spaces 15

## Segment C (Bonita to Evergreen)

Protected bike / pedestrian intersection

Raised speed table, crosswalks & bulb-outs



Parking Spaces = No change to available spaces 16



## Segment D (Evergreen to Balour)

Raised speed table, crosswalks & bulb-outs

Two-way existing walk (to Aloha)

One-way protected bike facility

Two-way new walkway (Aloha to Balour)



Bio-swales and Street Trees

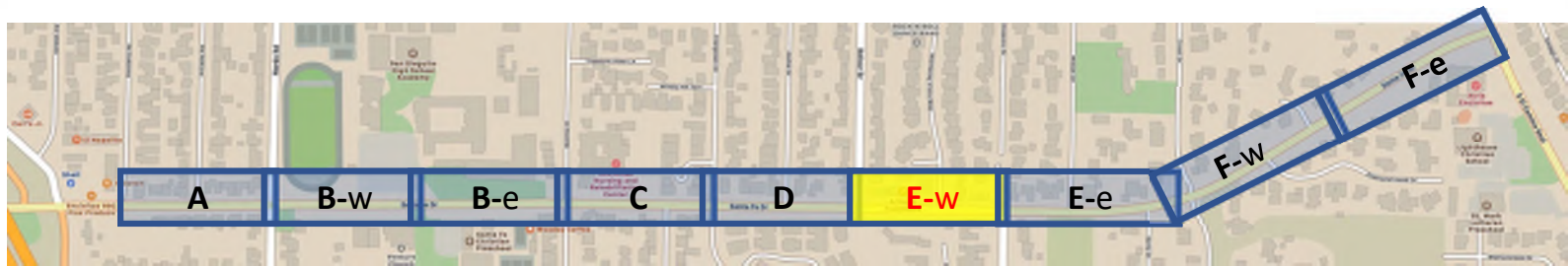
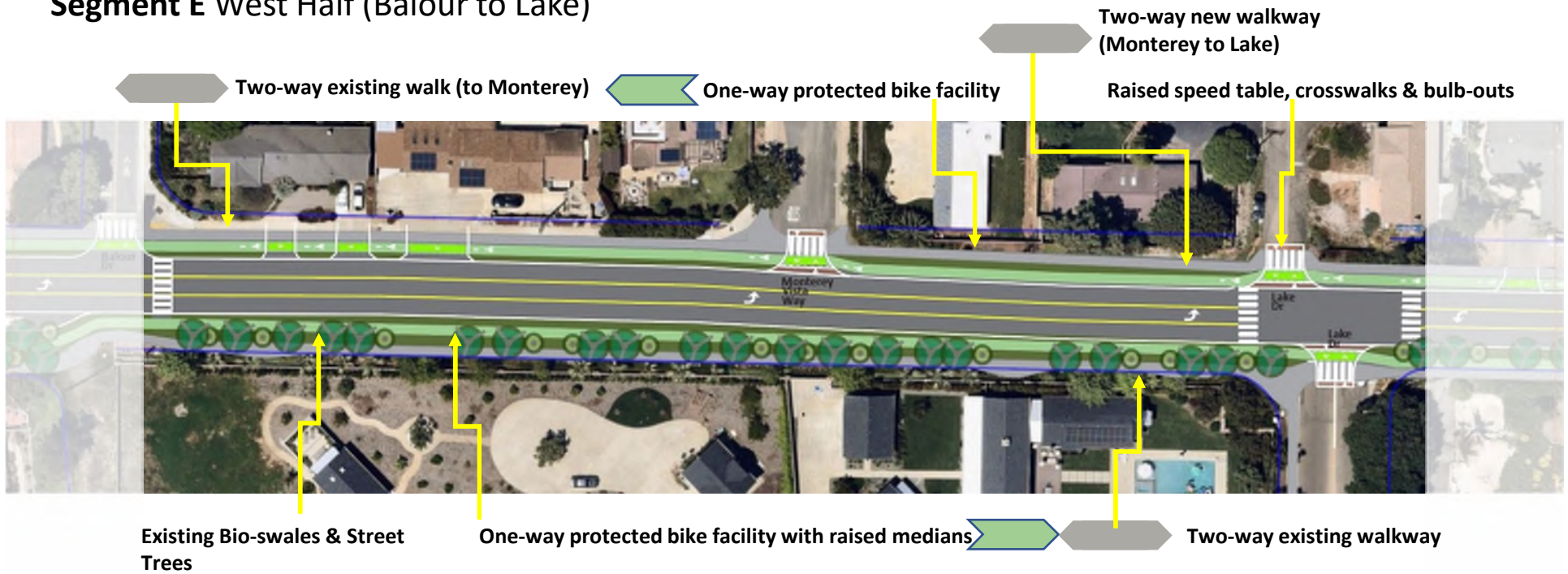
One-way protected bike facility with raised medians

Two-way existing walkway



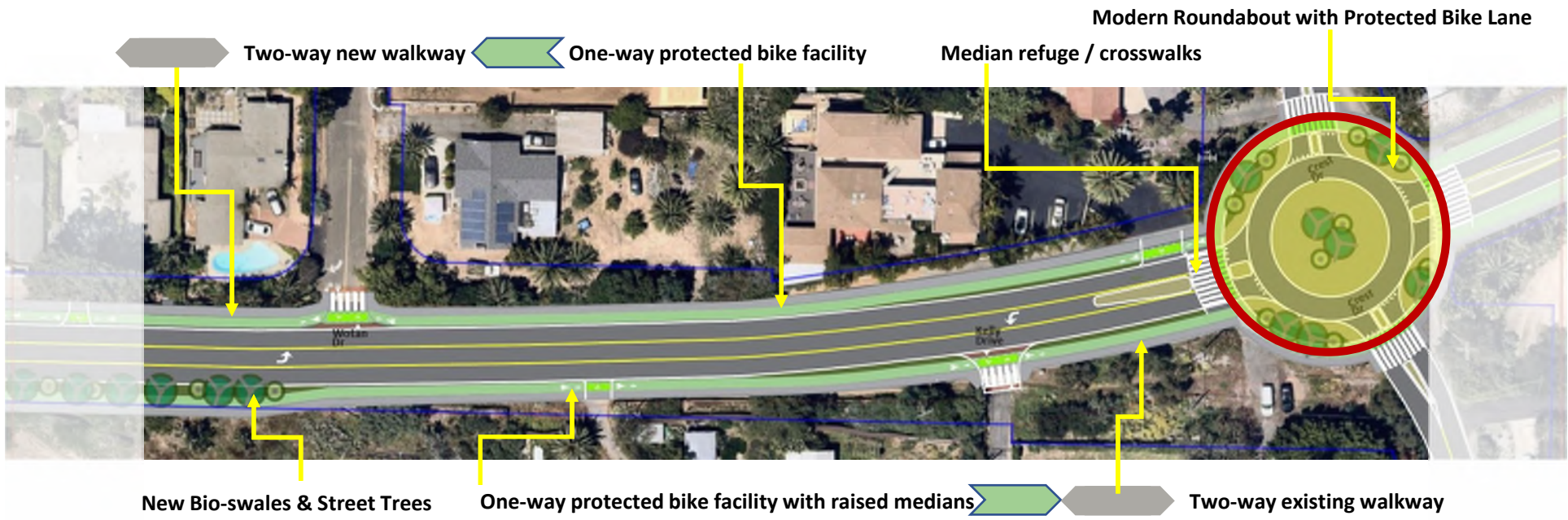
Parking Spaces = 5 new spaces

## Segment E West Half (Balour to Lake)



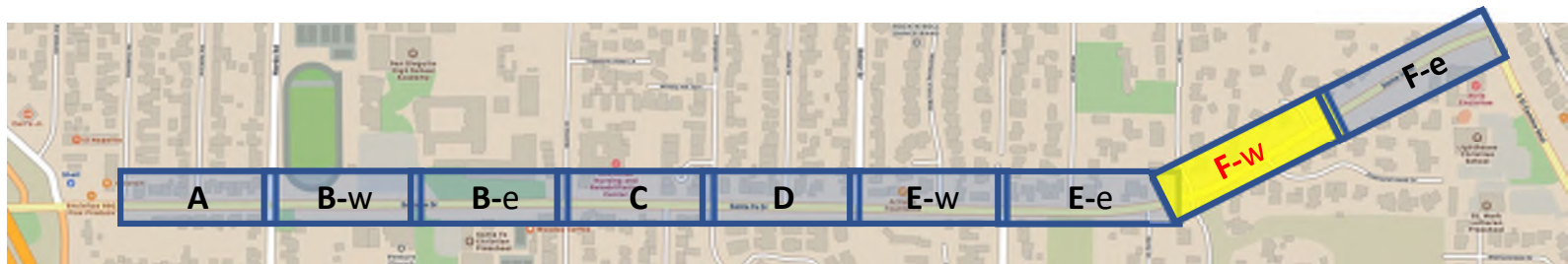
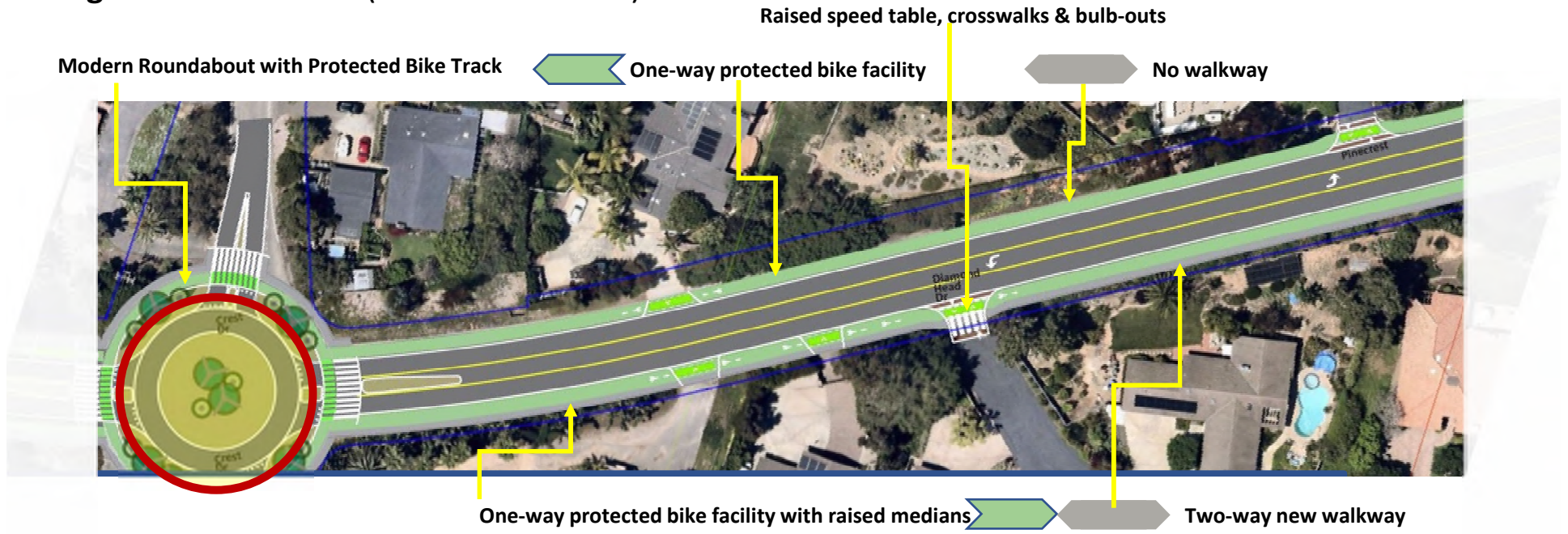
Parking Spaces = No change to available spaces 18

# Segment E East (Lake to Crest)



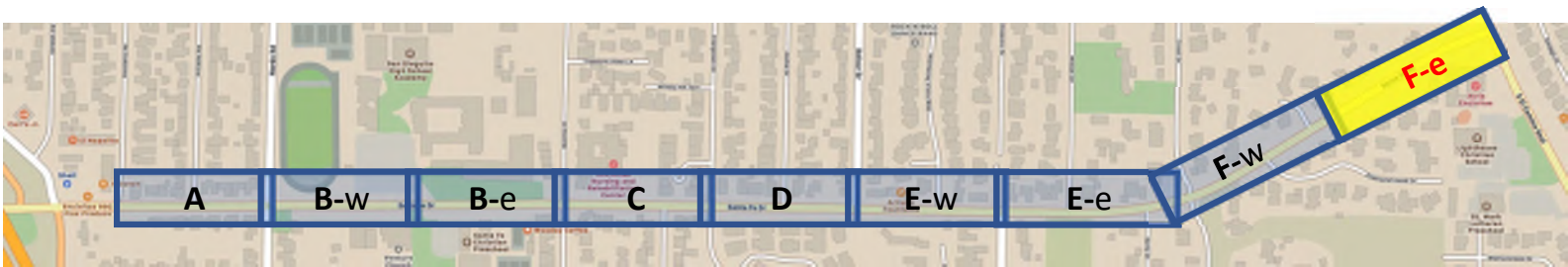
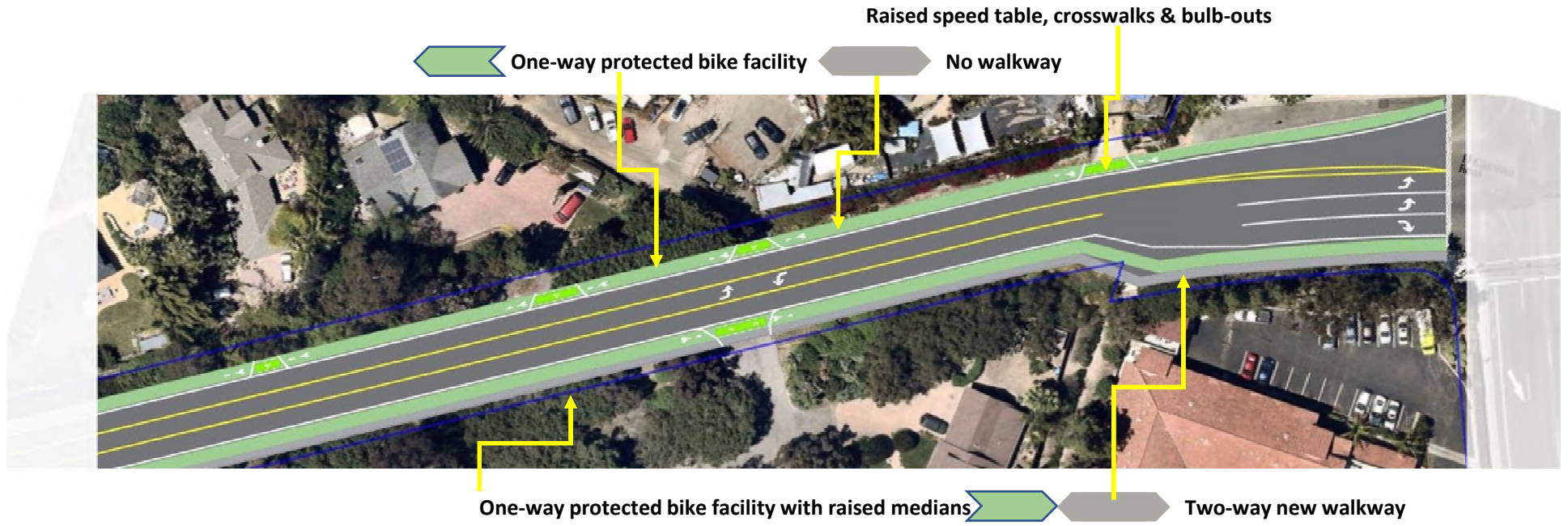
Parking Spaces = No change to available spaces 19

## Segment F West Half (Crest to Pinecrest)



Parking Spaces = No change to available spaces 20

## Segment F East Half (Pinecrest to El Camino Real)



Parking Spaces = No change to available spaces 21

**Thank You**

## **Matt Widelski, PE, QSD**

---

**Senior Engineer**

**mwidelski@encinitasca.gov**

**760-633-2862**

For more information and future project updates:  
<https://encinitasca.gov/I-Want-To/Public-Notices/Development-Services-Public-Notices>

