

# CROSS CONNECT

## GOALS & PROCESS

### GOALS OF THE *RAIL CORRIDOR CROSS-CONNECT IMPLEMENTATION PLAN*:

- BUILD UPON THE RECOMMENDATIONS OF THE RECENTLY COMPLETED *RAIL CORRIDOR VISION STUDY* AND *COASTAL MOBILITY & LIVABILITY STUDY*
- PRIORITIZE 20 POTENTIAL "CROSSING" AND "CONNECTOR" PROJECTS
- DEVELOP CONCEPTUAL PLANS FOR EACH PROJECT
- CREATE AN IMPLEMENTATION STRATEGY TO SECURE FUNDING AND REGULATORY APPROVALS

### PRIORITIZATION OF PROJECTS

Spring / Summer 2019

- Survey, public workshop & online outreach
- Prioritization of projects based on community input, feasibility, mobility benefits & other factors

### CONCEPT DESIGN

Fall / Winter 2019

- Draft concept plans for up to 20 priority projects
- Public workshop & online outreach

### FINAL PLAN

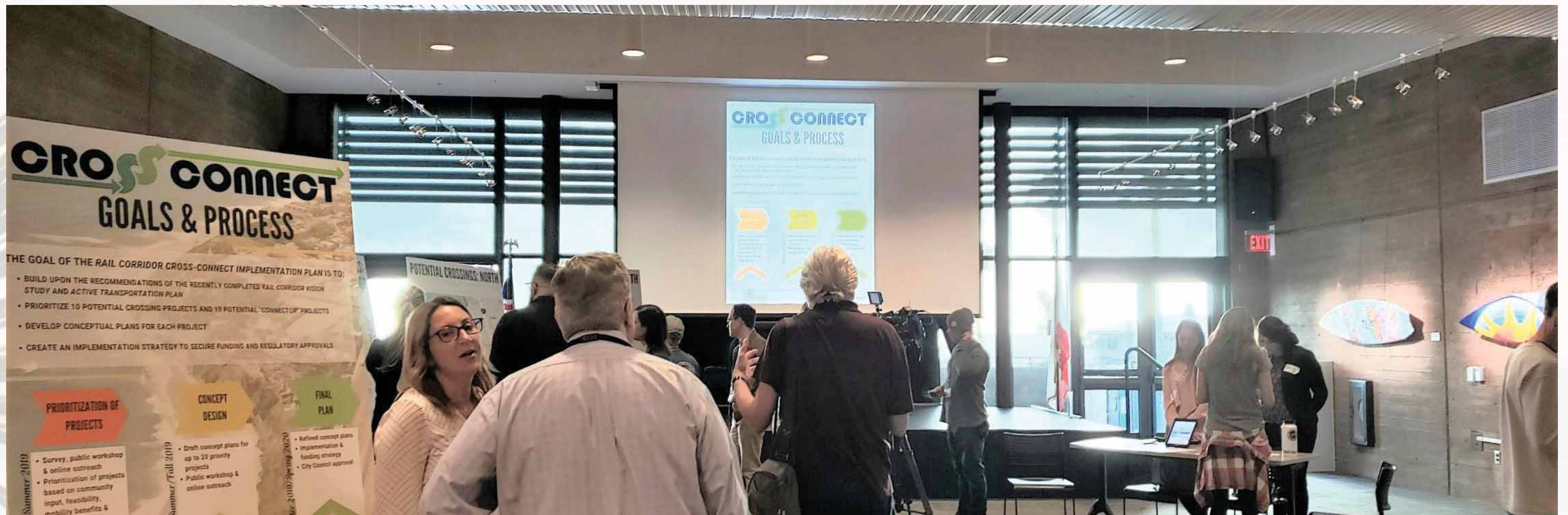
Spring 2020

- Refined concept plans
- Implementation & funding strategy
- City Council approval

# POTENTIAL PROJECTS: WHOLE CORRIDOR



# COMMUNITY SURVEY RESULTS



The City of Encinitas conducted a city-wide survey from May to June 2019. The survey was administered online and at Open House #1 (May 2019). Survey participants included:

- » 678 Residents
- » 16 Businesses

## CORRIDOR USAGE

- » Approximately half (51%) of all residents cross the railroad tracks daily
- » 92% of residents walk or bike across the tracks at least some of the time
- » 74% of residents cross the tracks at unmarked locations at least some of the time
- » 57% of businesses say that new or improved crossings would be extremely or very valuable for their business

## EVALUATION CRITERIA

The highest-ranked criteria for assessing new crossing locations are:

- » Improving safety
- » Reducing traffic/pollution

## NEW CROSSING LOCATION PRIORITIES

The highest-ranked locations for potential new crossings are:

- » Grandview St/Hillcrest Dr
- » Sanford St/Jupiter St
- » Birmingham Dr
- » Marcheta St/Orpheus Ave
- » Phoebe St/Glaucus St

## EXISTING LOCATION UPGRADES

The highest-ranked locations to prioritize upgrades to existing crossings are:

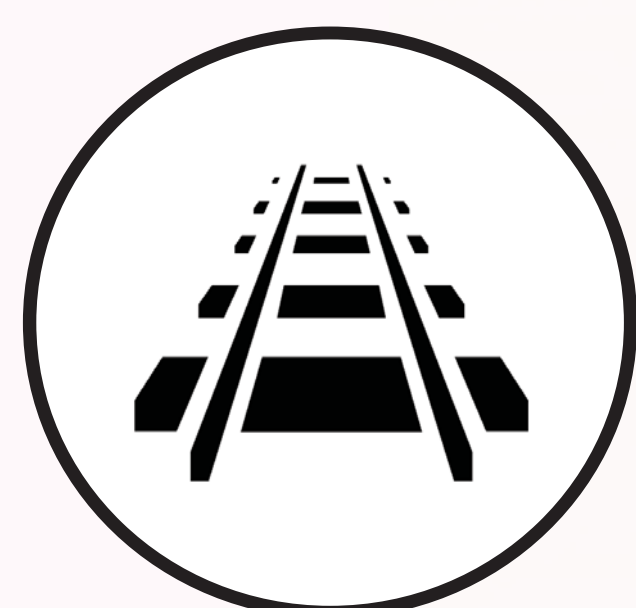
- » Leucadia Blvd
- » La Costa Ave

# PRELIMINARY RANKINGS

The project team evaluated potential new crossing locations based on multiple criteria:



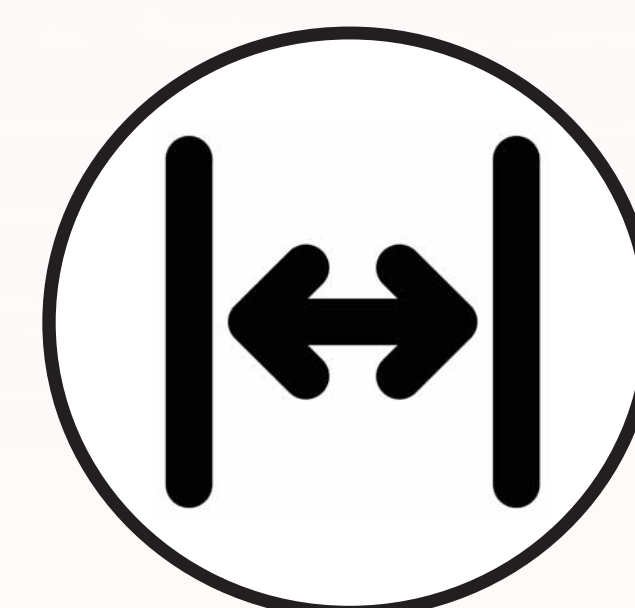
COMMUNITY SURVEY  
(Weight x1)



RAIL CORRIDOR VISION STUDY PRIORITIES  
(Weight x1)



ACCESS BENEFITS + GHG/VMT REDUCTION  
(Weight x2)



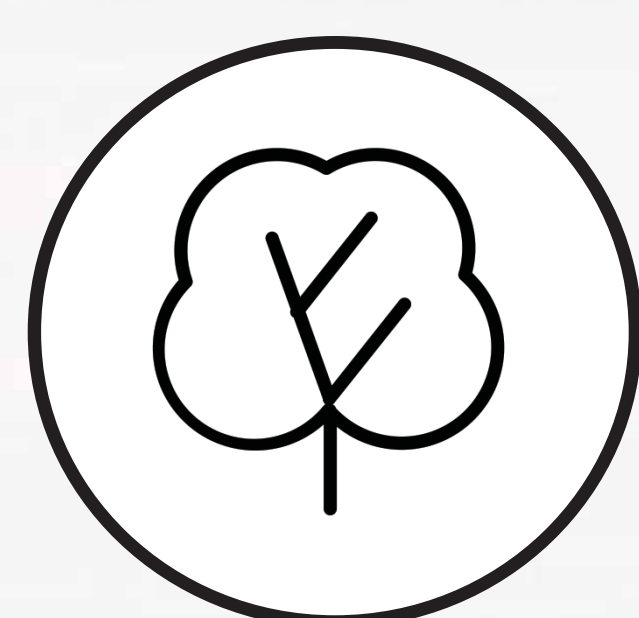
GAP CLOSURE  
(Weight x1)



CONNECTING ROUTES  
(Weight x1)



POTENTIAL SAFETY BENEFITS  
(Weight x2)



VIEWS + COMMUNITY CHARACTER  
(Weight x1)



COST  
(Weight x2)



FEASIBILITY  
(Weight x2)

Preliminary rankings (based on a weighted score of the above criteria) are summarized in the table below. Rankings are subject to change as design concepts are refined.

| POTENTIAL CROSSING             | WEIGHTED SCORE | RANK |
|--------------------------------|----------------|------|
| Sanford St/Jupiter St (#4)     | 736            | 1    |
| Grandview St/Hillcrest Dr (#3) | 642            | 2    |
| Marcheta St/Orpheus Ave (#11)  | 540            | 3    |
| Bishop's Gate Dr (#2)          | 517            | 4    |
| Phoebe St/Glaucus St (#6)      | 510            | 5    |
| Birmingham Dr (#18)            | 472            | 6    |
| H St/I St*                     | 453            | 7    |
| Daphne St/Basil St (#9)        | 433            | 8    |
| A St/Sunset Dr (#12)           | 395            | 9    |
| Norfolk Dr/Dublin Dr*          | 235            | 10   |

\*H St/I St and Norfolk Dr/Dublin Dr are highly constrained and likely infeasible

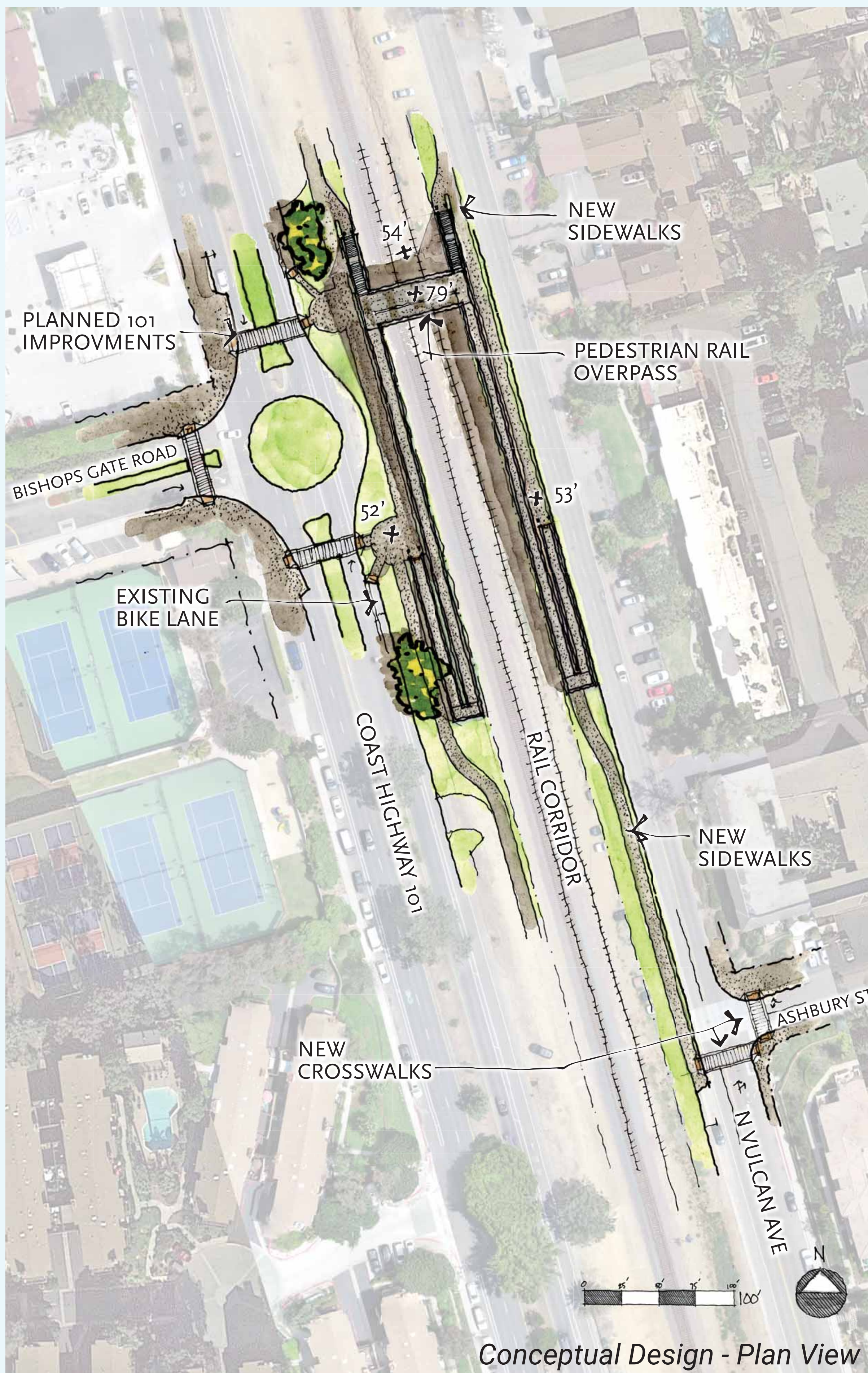
# LA COSTA AVE Connector (#1)



## PROJECT DESCRIPTION

- » Sidewalks and crosswalks on La Costa Ave and Vulcan Ave
- » Improved lighting and sidewalk protection on La Costa Ave bridge

# BISHOP'S GATE RD Crossing (#2)



Conceptual Design - Plan View



Conceptual Design - Perspective

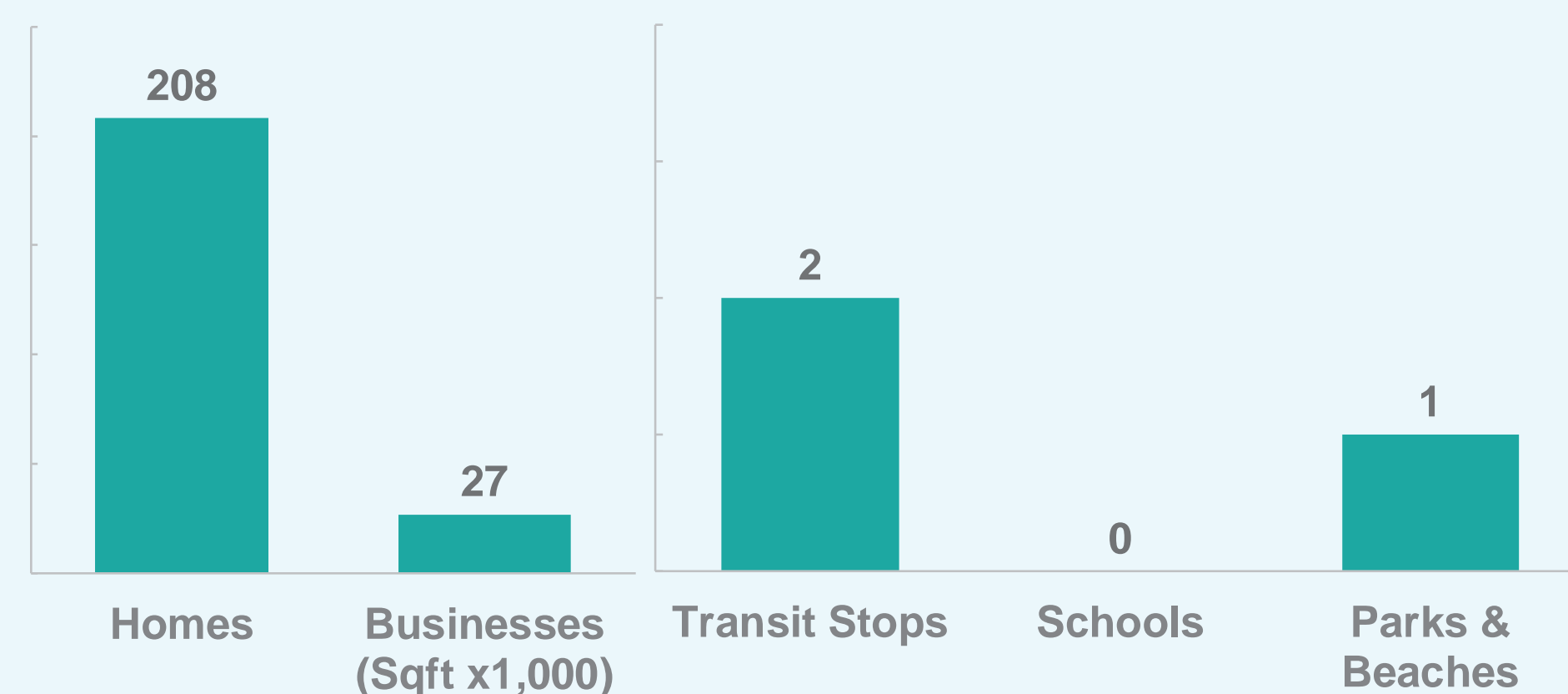
## PROJECT DESCRIPTION

- » Pedestrian rail overpass with ramps and stairs
- » Sidewalks and crosswalks on Vulcan Ave and Ashbury St

## ACCESS BENEFITS

The number of homes and destinations within a 5-minute walk helps determine the project's potential benefits, user demand, and ability to reduce greenhouse gas emissions and vehicle miles traveled.

### 5-Minute Walk Distance (Analysis)



### 5-Minute Walk Distance (Map)



# GRANDVIEW ST/HILLCREST DR Crossing (#3) Crossing (#3)

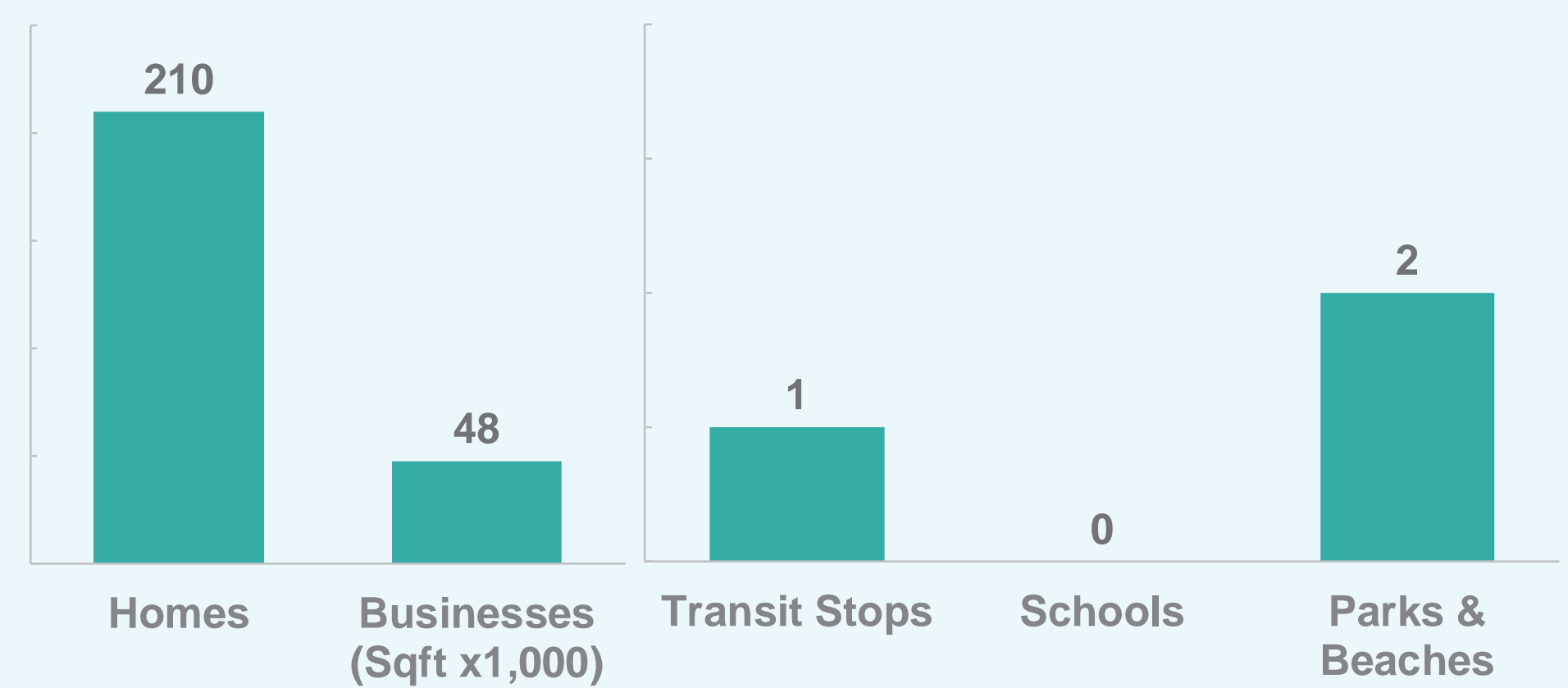
## PROJECT DESCRIPTION

- » Pedestrian rail overpass with stairs and elevators
- » Sidewalks and crosswalks on Vulcan Ave, Coral Cove Way, and Hillcrest Dr

## ACCESS BENEFITS

The number of homes and destinations within a 5-minute walk helps determine the project's potential benefits, user demand, and ability to reduce greenhouse gas emissions and vehicle miles traveled.

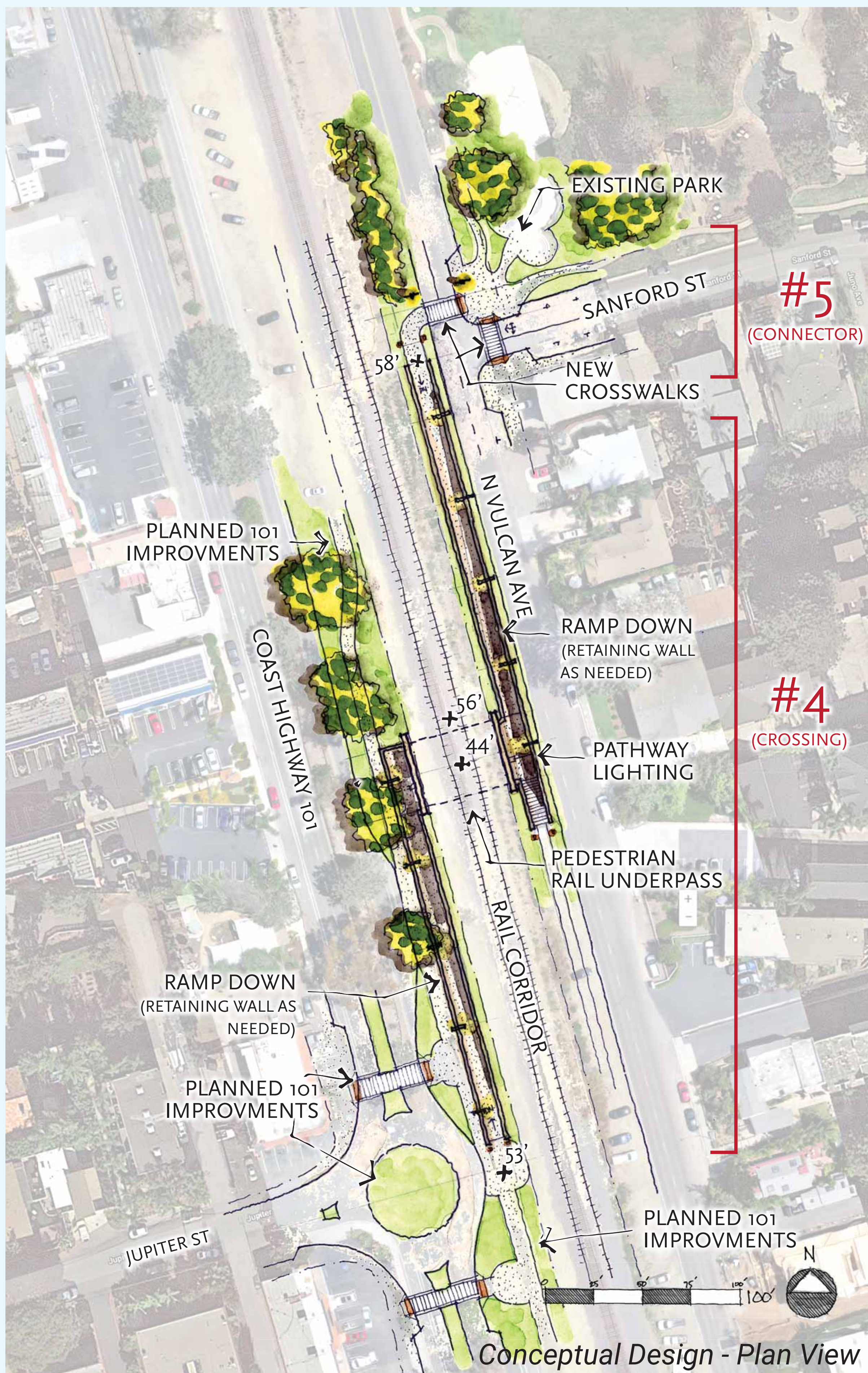
### 5-Minute Walk Distance (Analysis)



### 5-Minute Walk Distance (Map)



# SANFORD ST/JUPITER ST Crossing (#4) + Connector (#5)



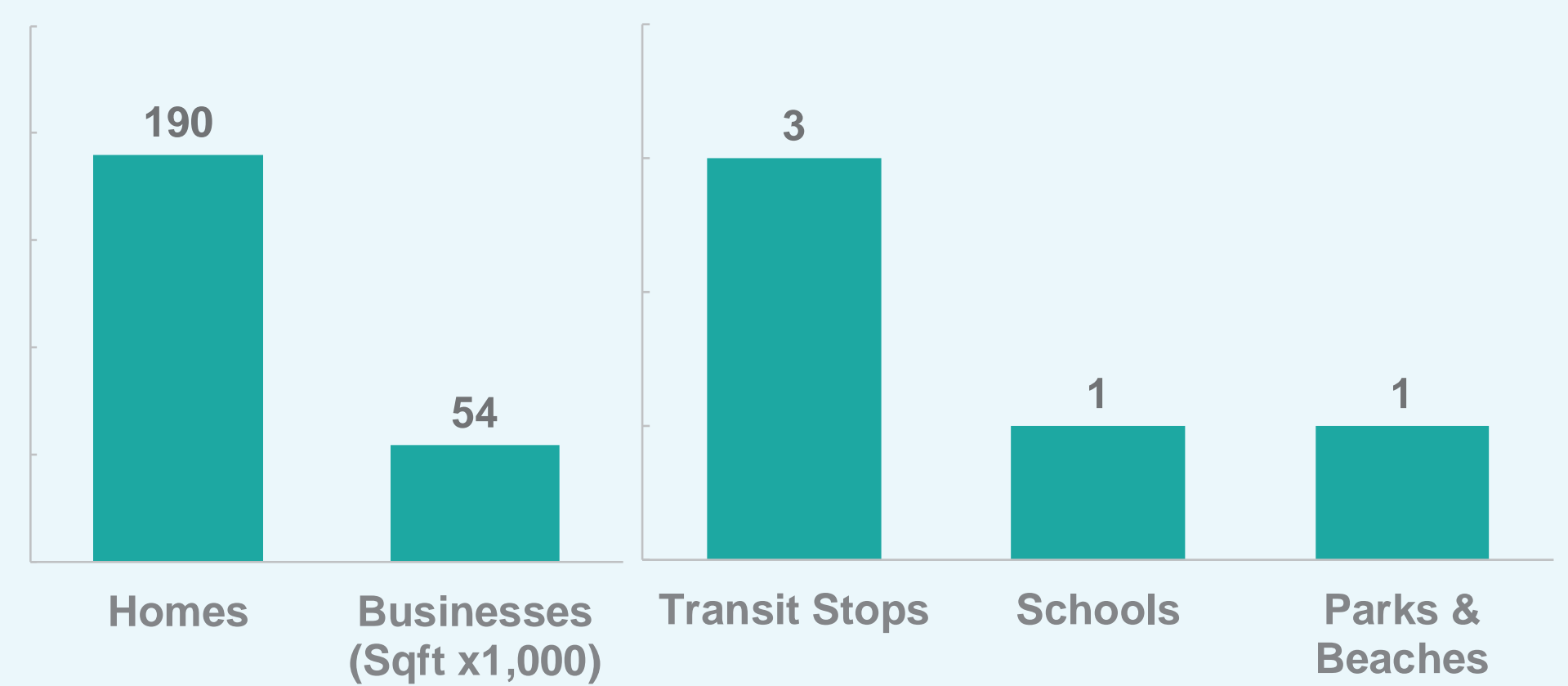
## PROJECT DESCRIPTION

- » Pedestrian rail underpass with ramps
- » Sidewalks and crosswalks on Vulcan Ave and Sanford St

## ACCESS BENEFITS

The number of homes and destinations within a 5-minute walk helps determine the project's potential benefits, user demand, and ability to reduce greenhouse gas emissions and vehicle miles traveled.

5-Minute Walk Distance (Analysis)

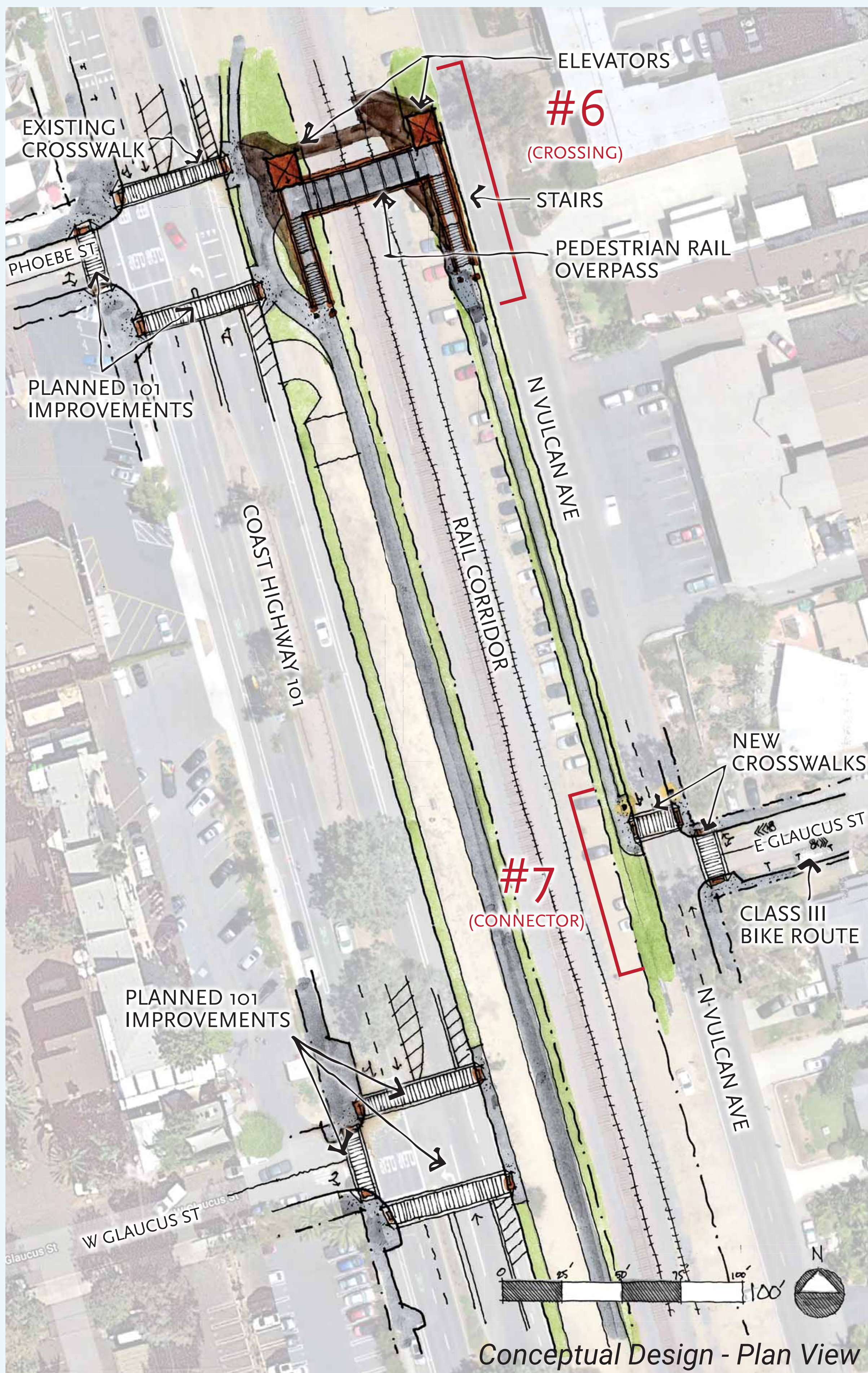


5-Minute Walk Distance (Map)





# PHOEBE ST/GLAUCUS ST Crossing (#6) + Connector (#7)



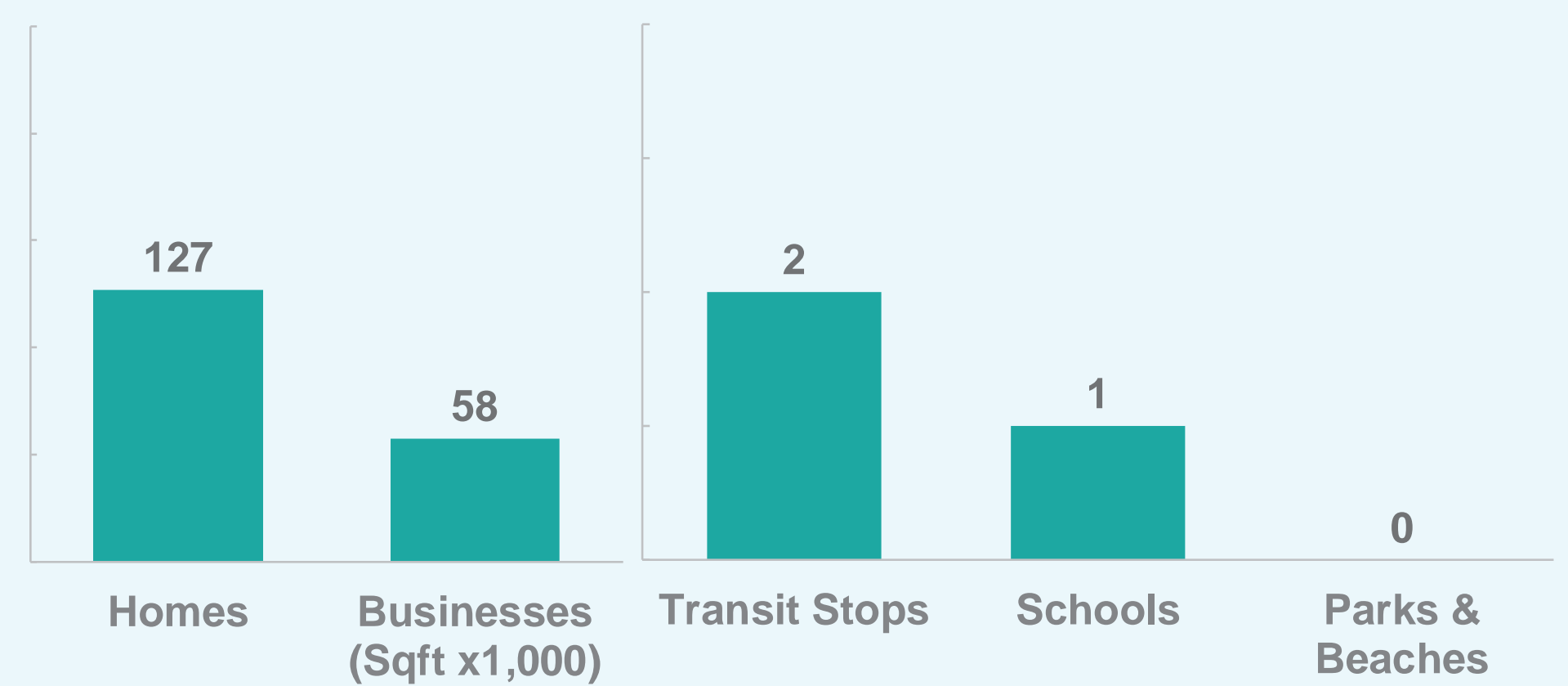
## PROJECT DESCRIPTION

- » Pedestrian rail overpass with elevators and stairs
- » Sidewalks and crosswalks on Vulcan Ave
- » Decomposed granite trail and Class III shared bike route on E Glaucus St

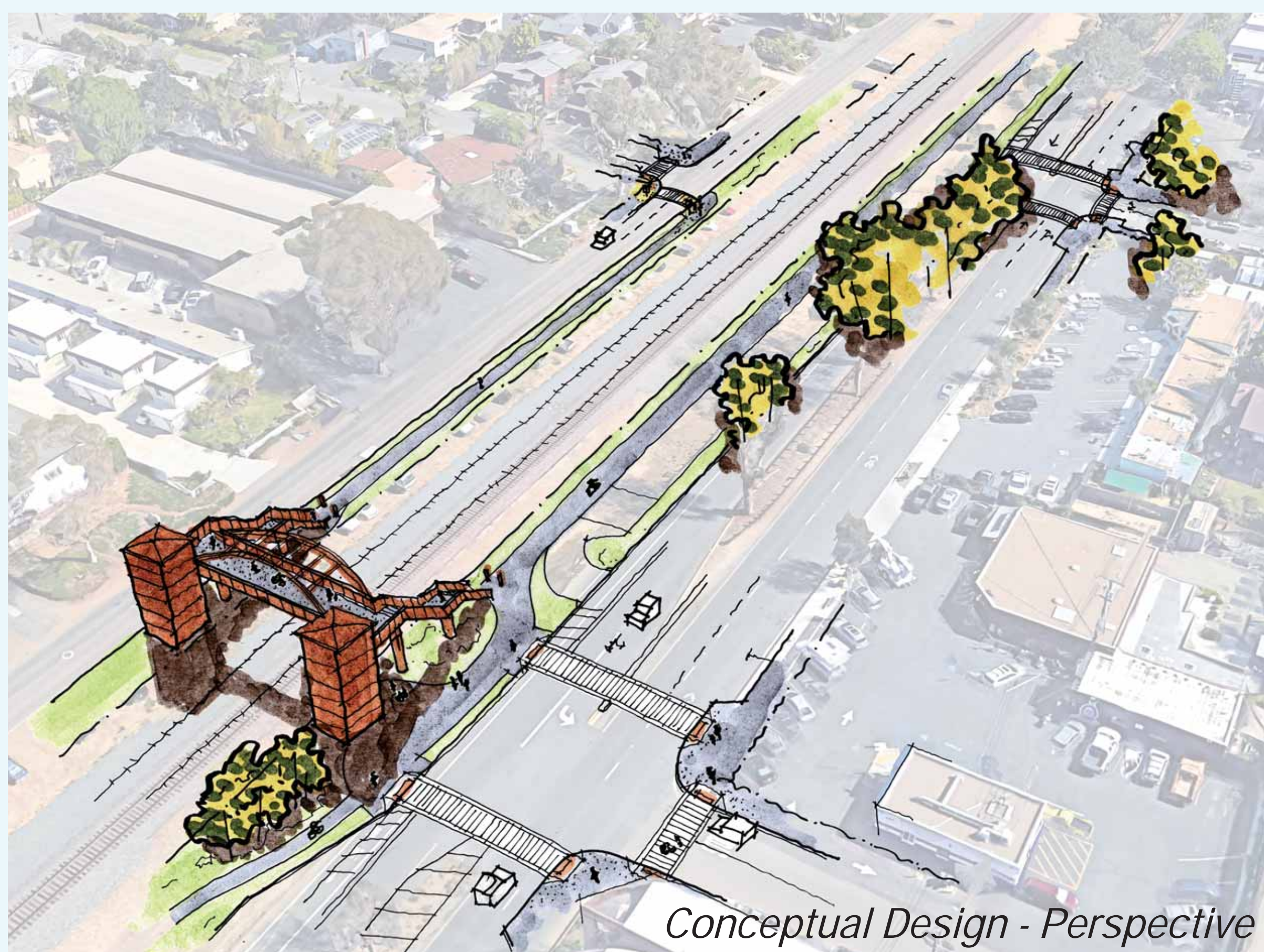
## ACCESS BENEFITS

The number of homes and destinations within a 5-minute walk helps determine the project's potential benefits, user demand, and ability to reduce greenhouse gas emissions and vehicle miles traveled.

5-Minute Walk Distance (Analysis)



5-Minute Walk Distance (Map)



# LEUCADIA BLVD Connector (#8)



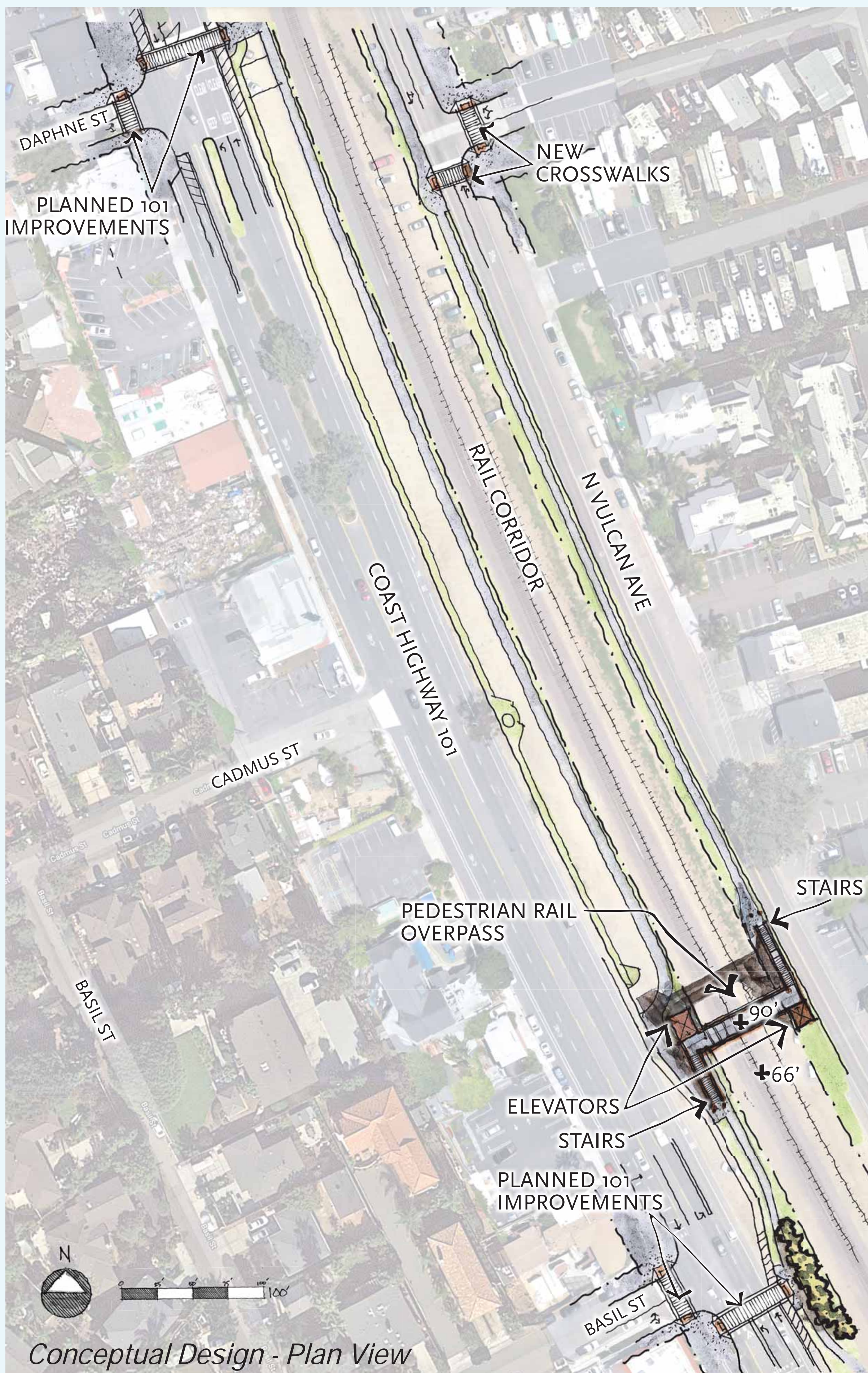
Conceptual Design - Plan View

## PROJECT DESCRIPTION

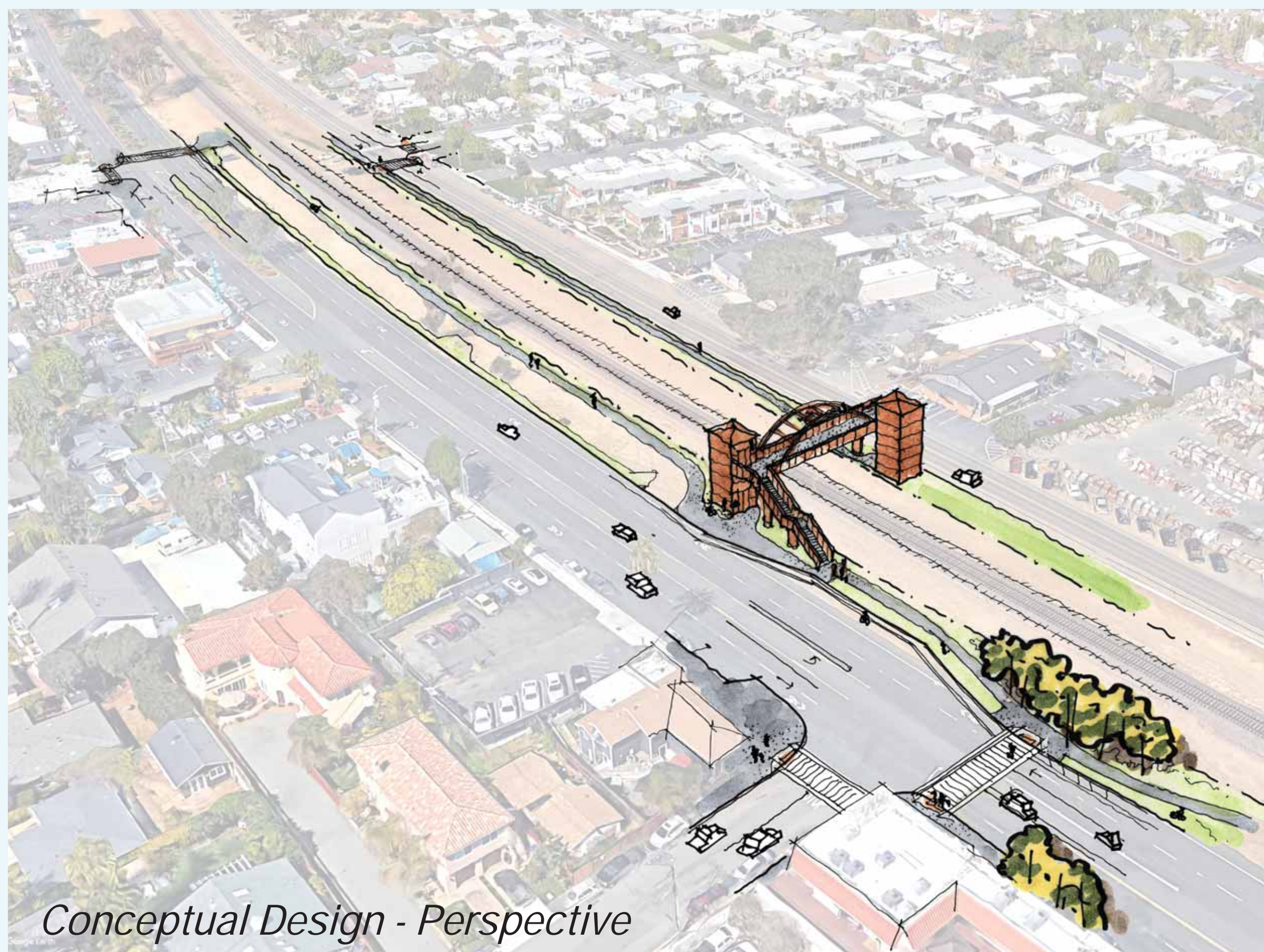
- » Improvements to existing bike lanes on Leucadia Blvd
- » Sidewalk on Vulcan Ave

# DAPHNE ST/BASIL ST

Crossing (#9)



Conceptual Design - Plan View



Conceptual Design - Perspective

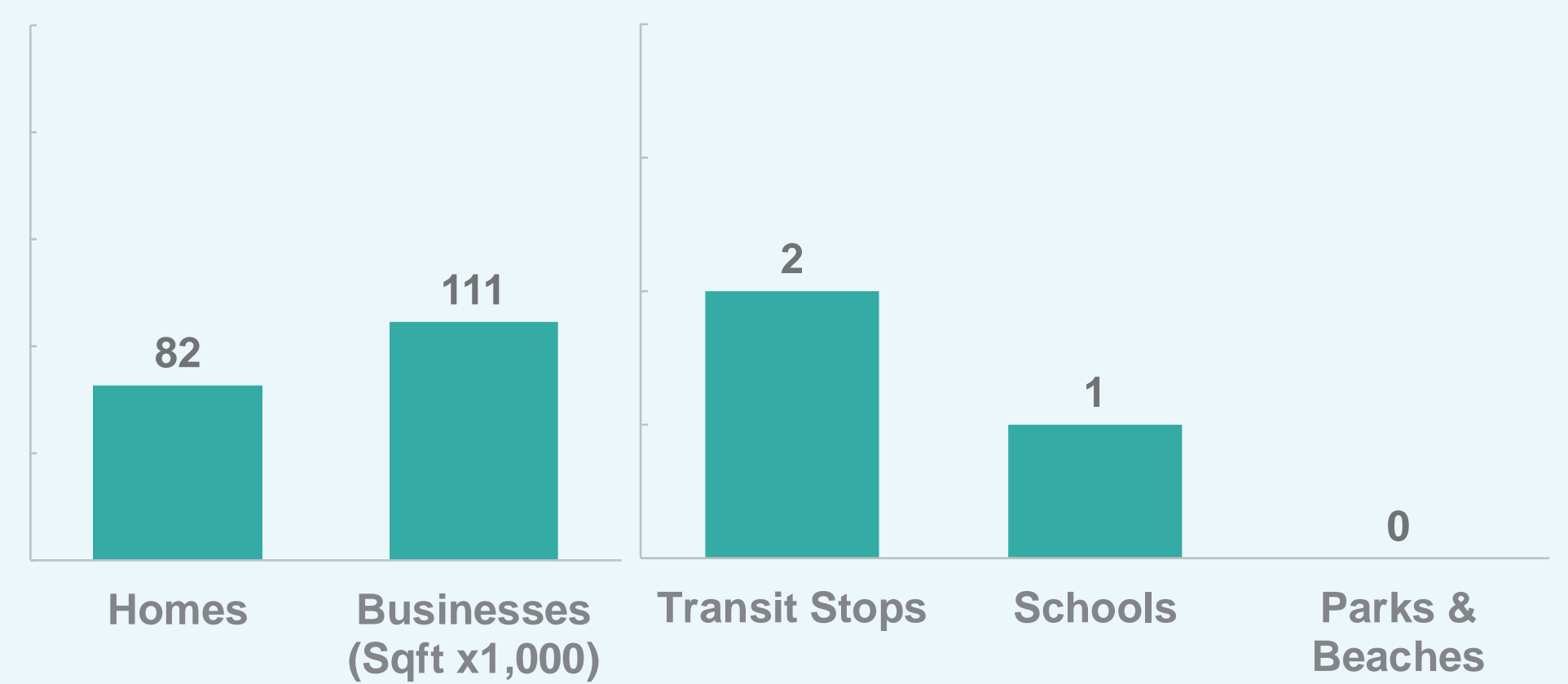
## PROJECT DESCRIPTION

- » Pedestrian rail overpass with elevators and stairs
- » Sidewalks and crosswalks on Vulcan Ave

## ACCESS BENEFITS

The number of homes and destinations within a 5-minute walk helps determine the project's potential benefits, user demand, and ability to reduce greenhouse gas emissions and vehicle miles traveled.

5-Minute Walk Distance (Analysis)



5-Minute Walk Distance (Map)



# UNION ST Connector (#10)



## PROJECT DESCRIPTION

- » Sidewalks and crosswalks on Vulcan Ave and Union St
- » Class III shared bike route on Union St

# MARCHETA ST/ORPHEUS AVE Crossing (#11) Crossing (#11)

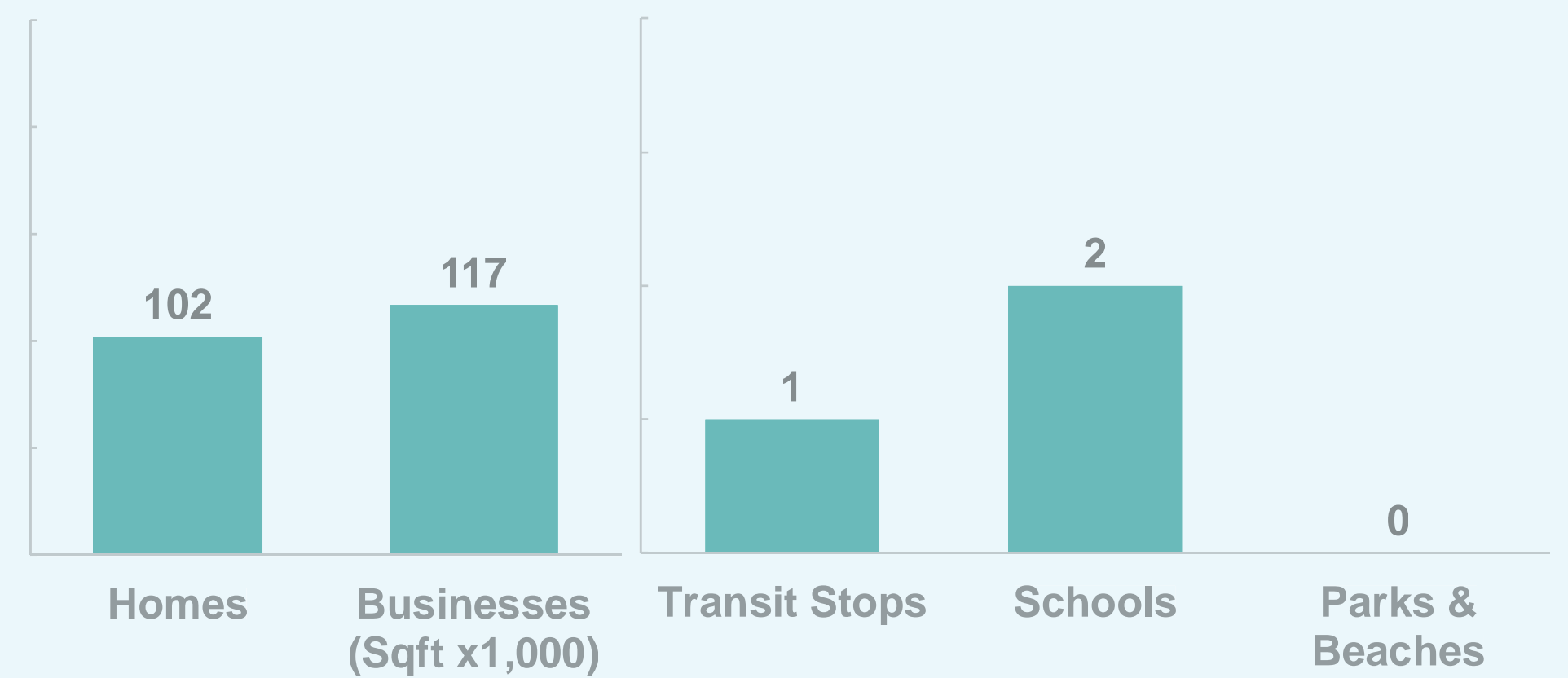
## PROJECT DESCRIPTION

- » Pedestrian rail underpass with ramps
- » Sidewalks and crosswalks on Vulcan Ave and Orpheus Ave

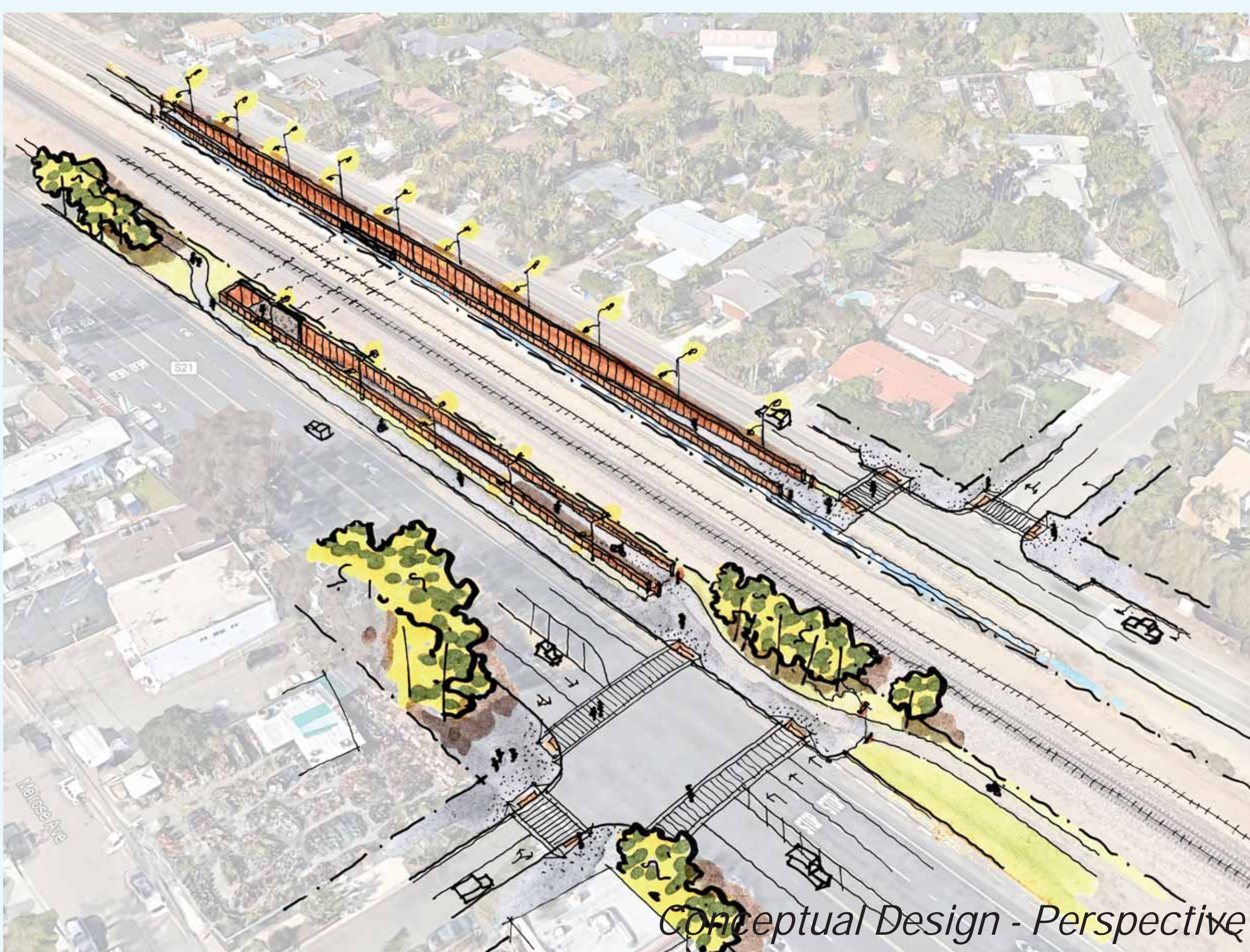
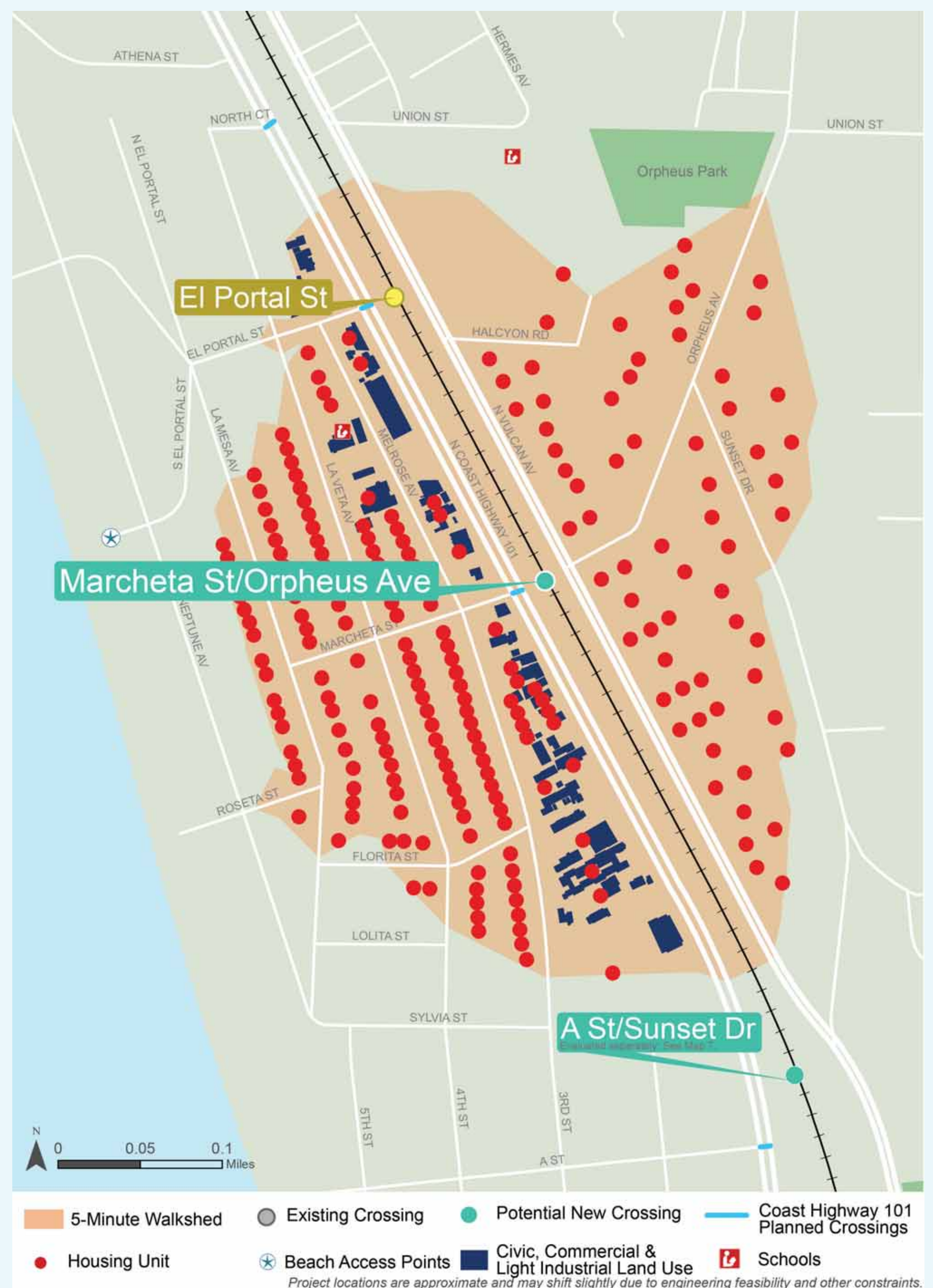
## ACCESS BENEFITS

The number of homes and destinations within a 5-minute walk helps determine the project's potential benefits, user demand, and ability to reduce greenhouse gas emissions and vehicle miles traveled.

### 5-Minute Walk Distance (Analysis)



### 5-Minute Walk Distance (Map)



# A ST/SUNSET DR Crossing (#12)

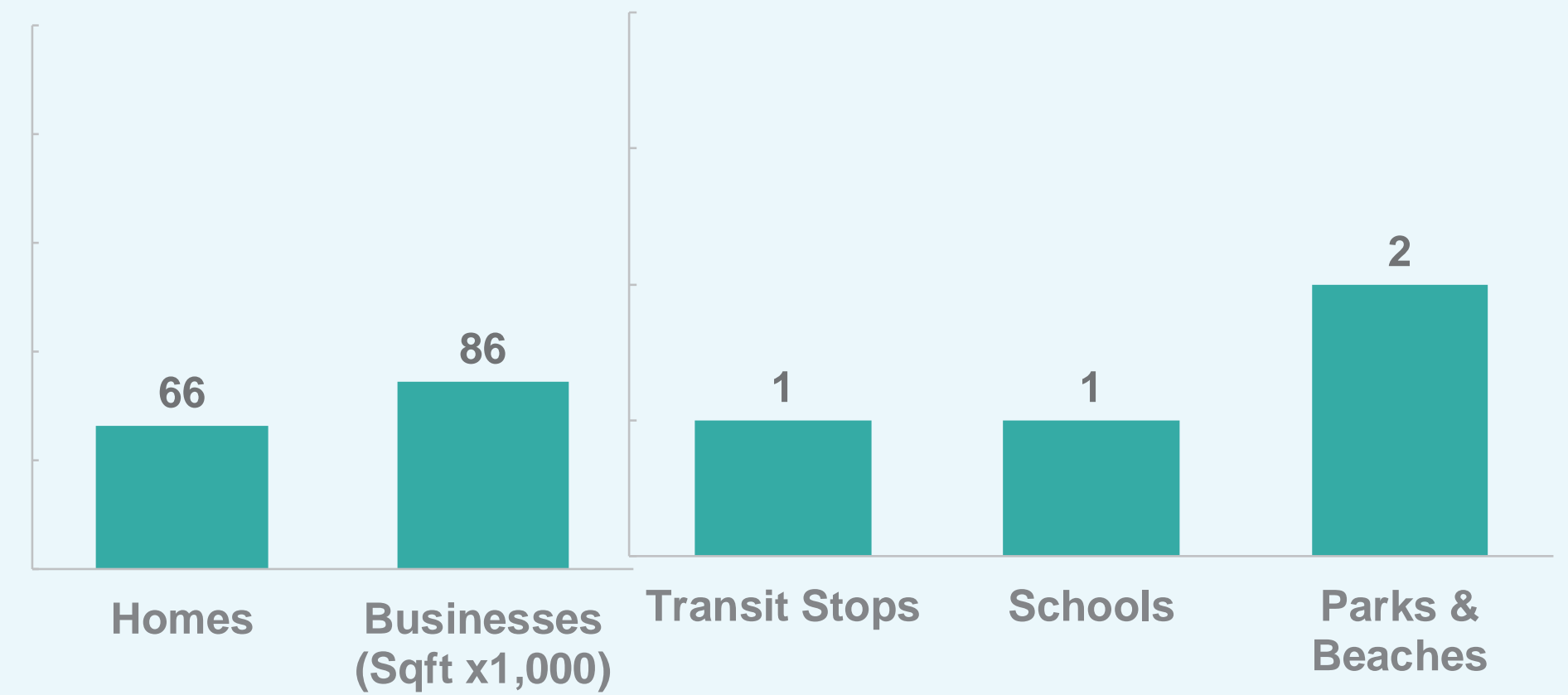
## PROJECT DESCRIPTION

- » Pedestrian rail underpass with ramps
- » Crosswalks at A Street and Sunset Dr

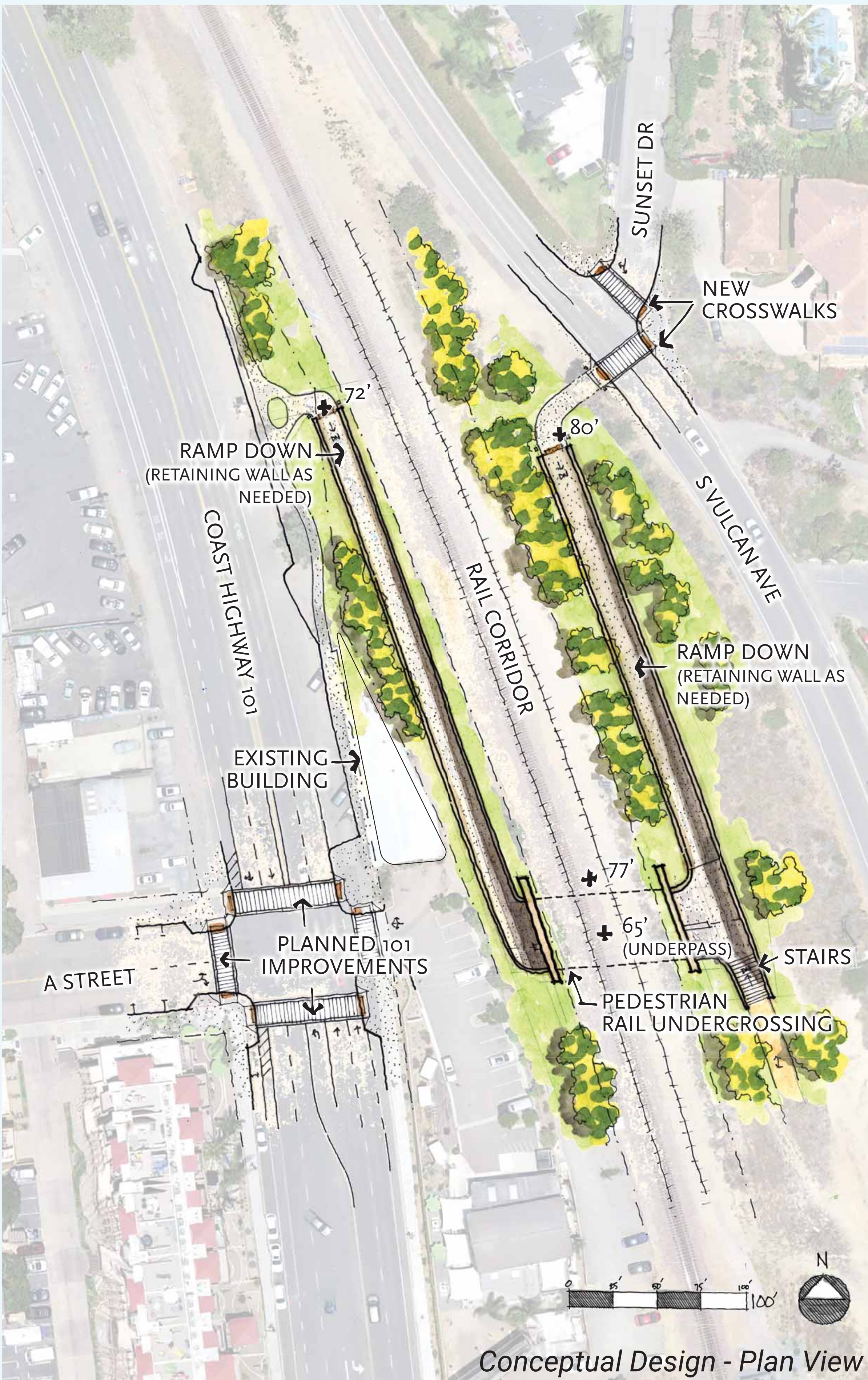
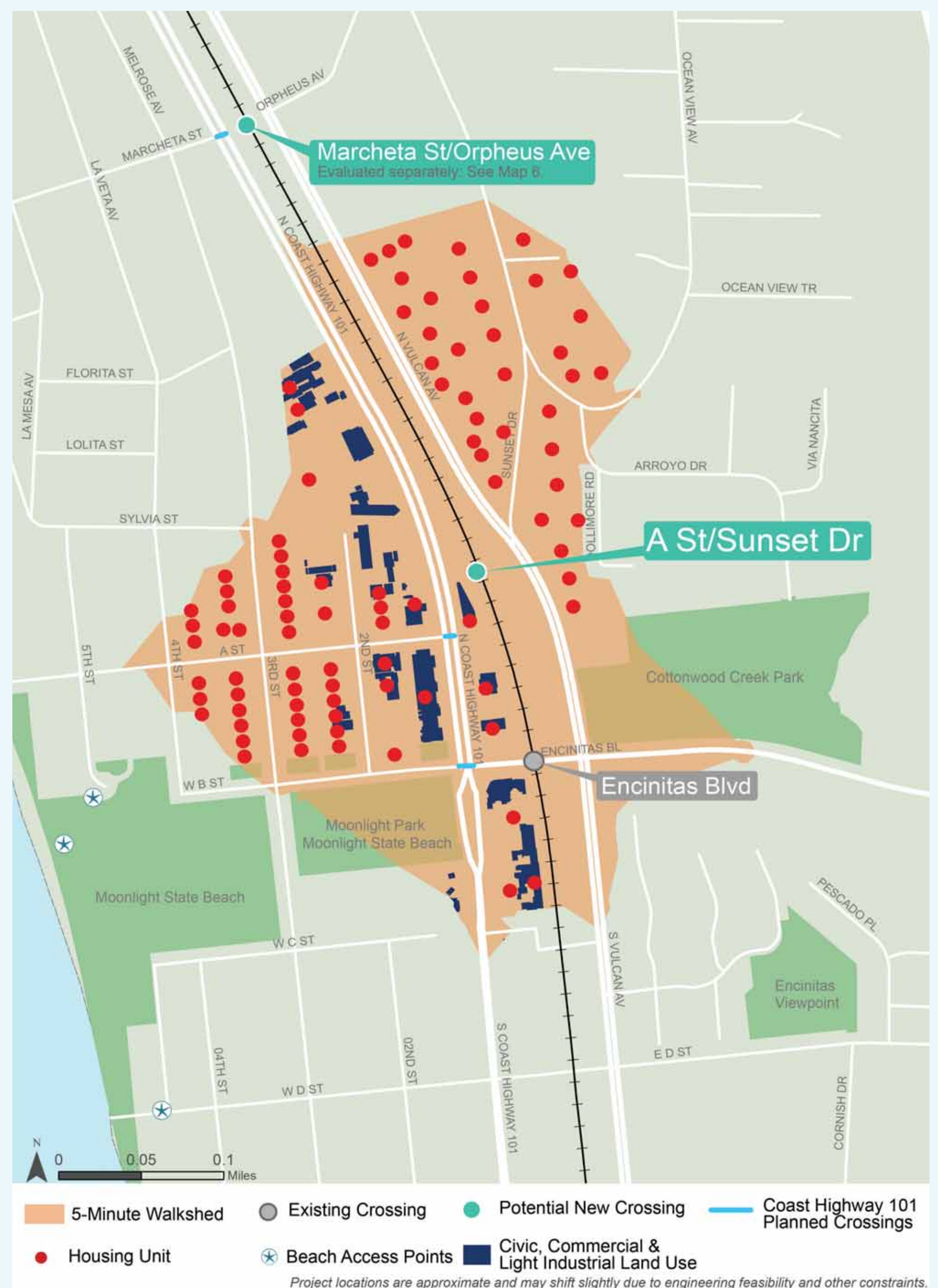
## ACCESS BENEFITS

The number of homes and destinations within a 5-minute walk helps determine the project's potential benefits, user demand, and ability to reduce greenhouse gas emissions and vehicle miles traveled.

### 5-Minute Walk Distance (Analysis)



### 5-Minute Walk Distance (Map)



# ENCINITAS BLVD

Connector (#13)



*Conceptual Design - Perspective*

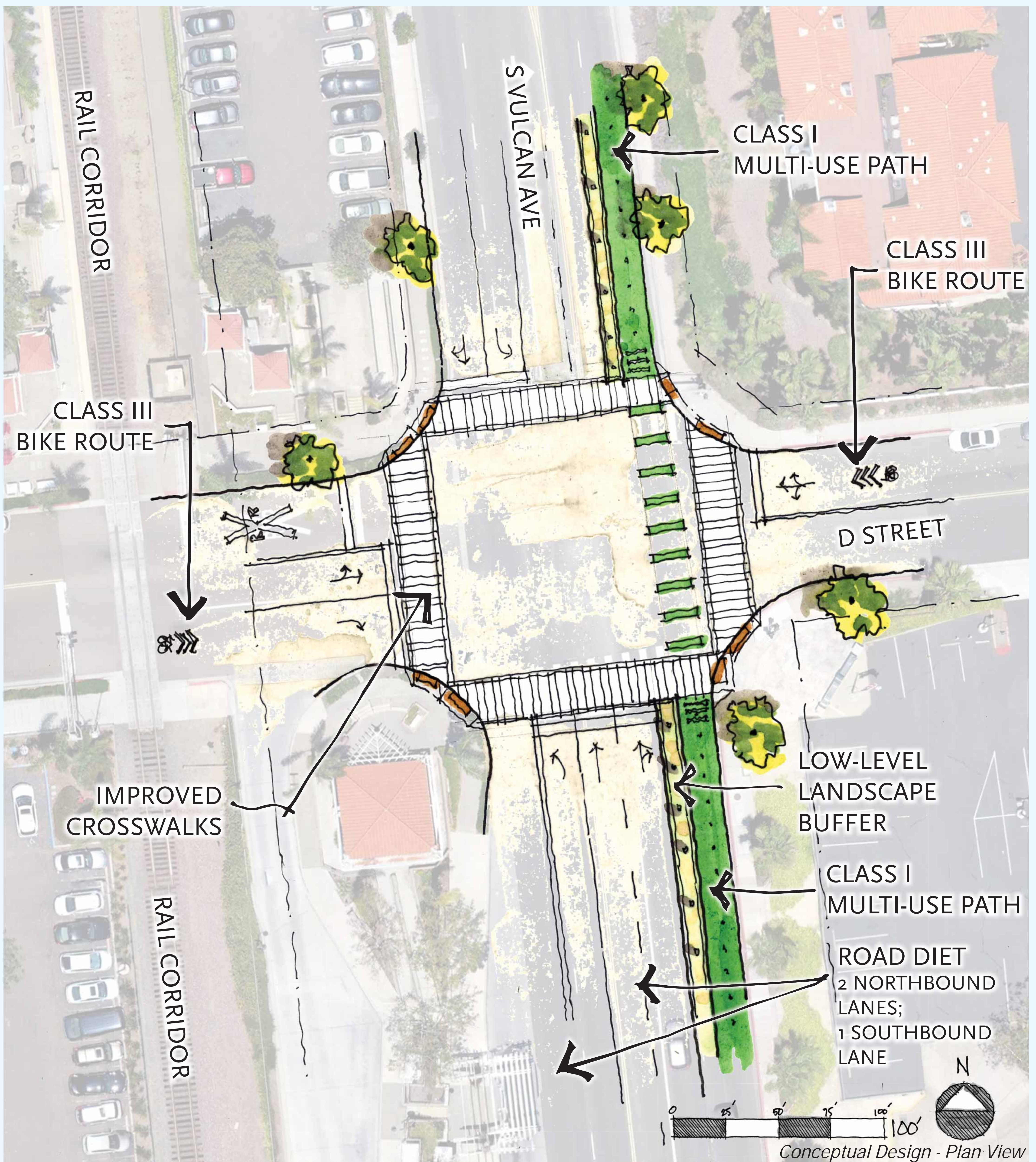
## PROJECT DESCRIPTION

- » Pedestrian bridges over Vulcan Ave and Encinitas Blvd
- » Class I multi-use path along south side of Encinitas Blvd
- » Class II buffered bike lane on north side of Encinitas Blvd
- » Active Transportation Plan (ATP) concept

JANUARY 2020  
[encinitasca.gov/Cross-Connect](http://encinitasca.gov/Cross-Connect)



# D STREET Connector (#14)



## PROJECT DESCRIPTION

- » Class I multi-use path on east side of Vulcan Ave
- » Class III shared bike route on D Street
- » Active Transportation Plan (ATP) concept



# F STREET Connector (#15)

# SANTA FE DR Connector (#16)



## PROJECT DESCRIPTION

- » Sidewalks and crosswalks on Vulcan Ave, F Street, and I Street
- » Class III shared bike route on F Street

JANUARY 2020  
[encinitasca.gov/Cross-Connect](http://encinitasca.gov/Cross-Connect)

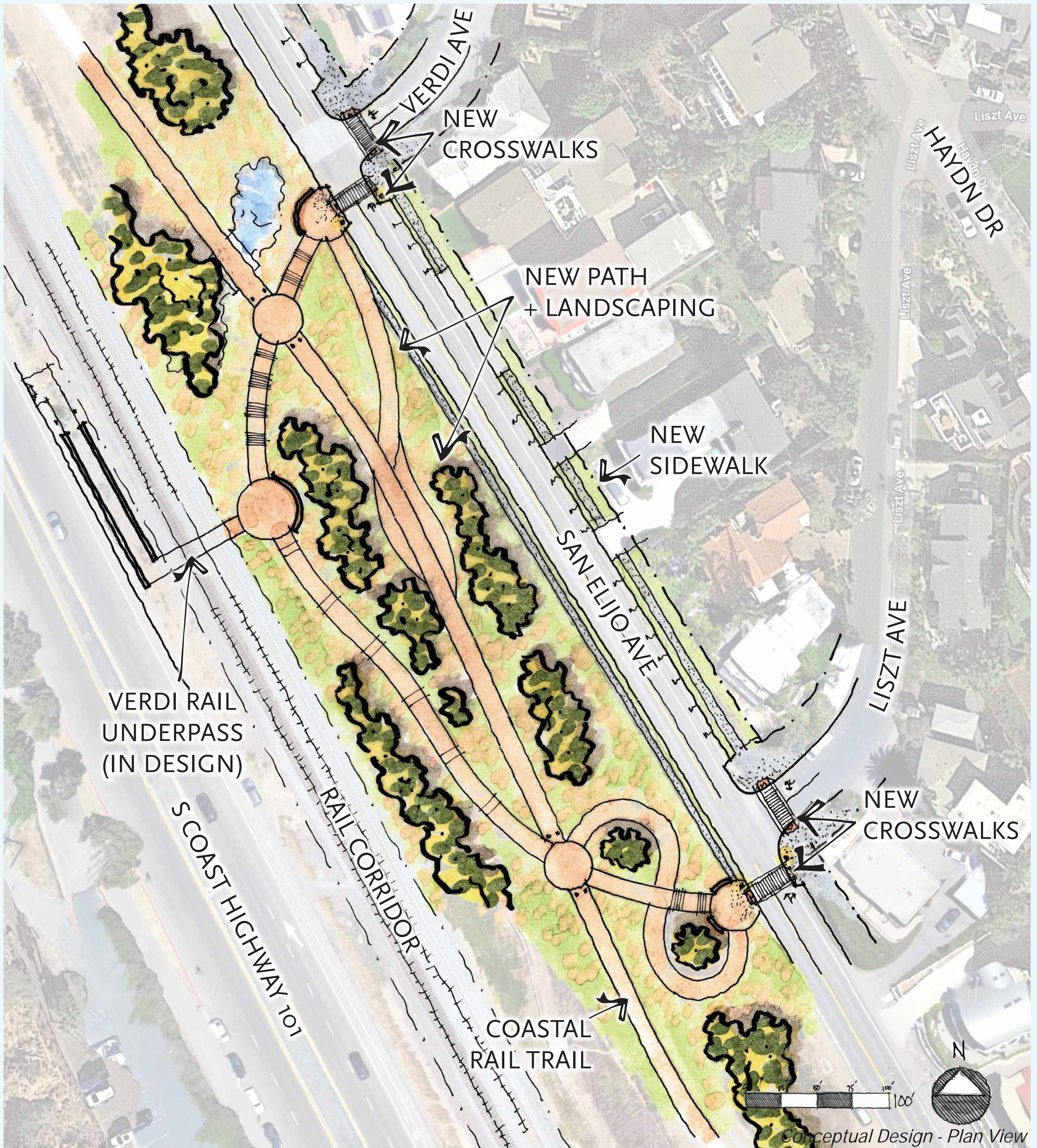


## PROJECT DESCRIPTION

- » Sidewalks and crosswalks on Vulcan Ave and J Street
- » Crosswalks and improved lighting at Santa Fe Dr and Vulcan Ave intersection



# VERDI AVE Connector (#17)

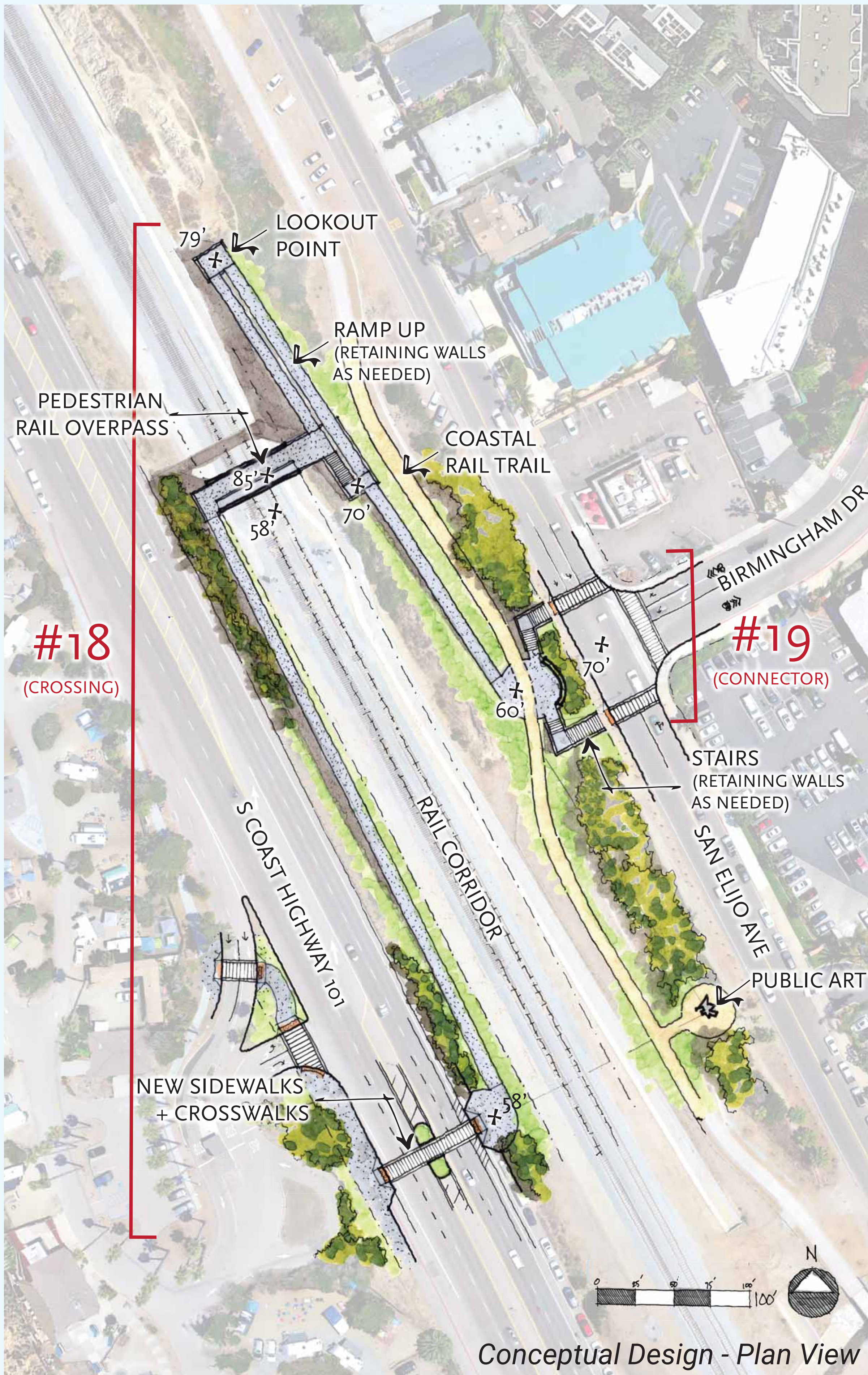


## PROJECT DESCRIPTION

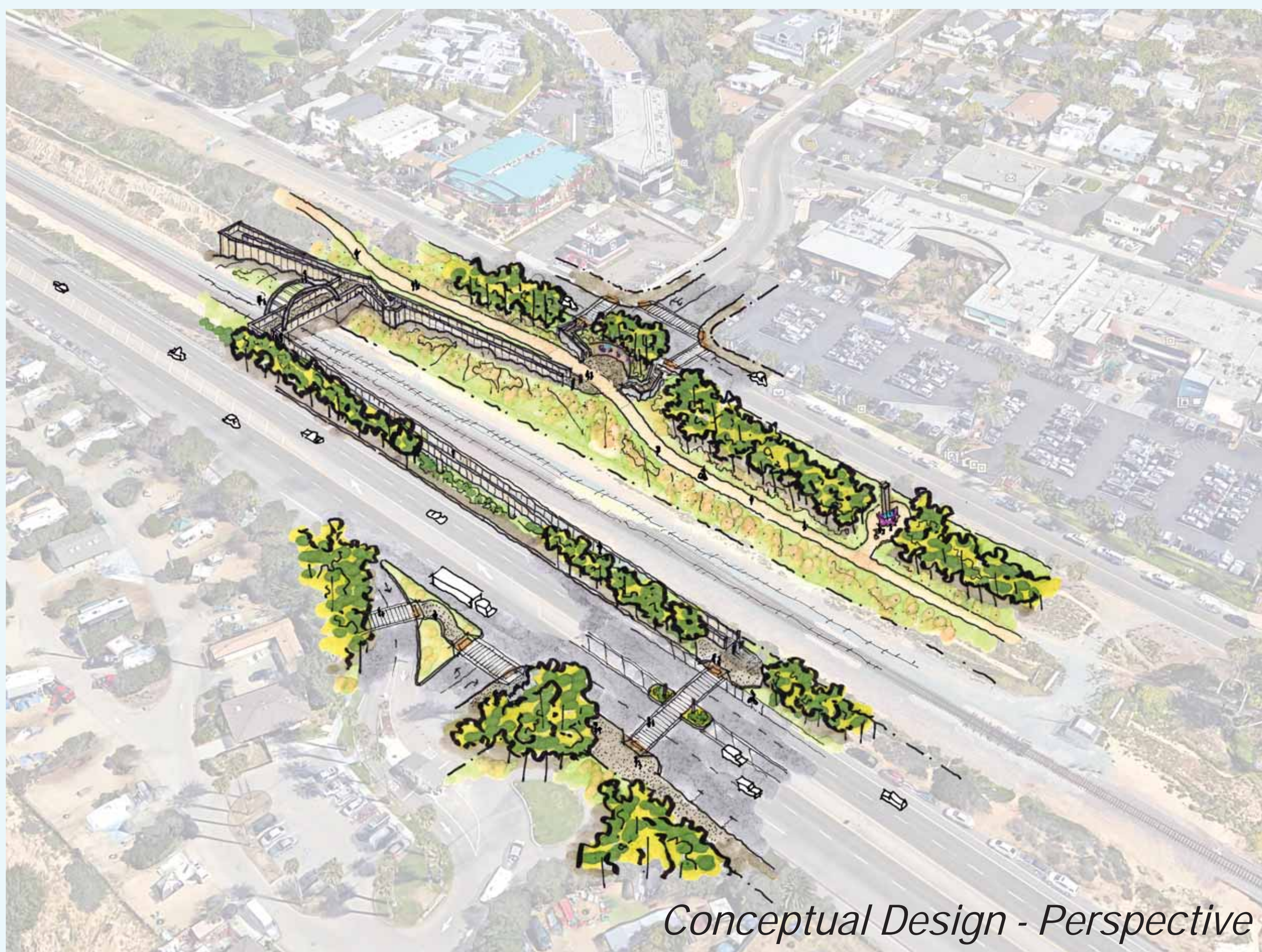
- » Sidewalks on San Elijo Ave
- » Crosswalks and improved sidewalks at Verdi Ave and Liszt Ave intersections

# BIRMINGHAM DR

## Crossing (#18) + Connector (#19)



Conceptual Design - Plan View



Conceptual Design - Perspective

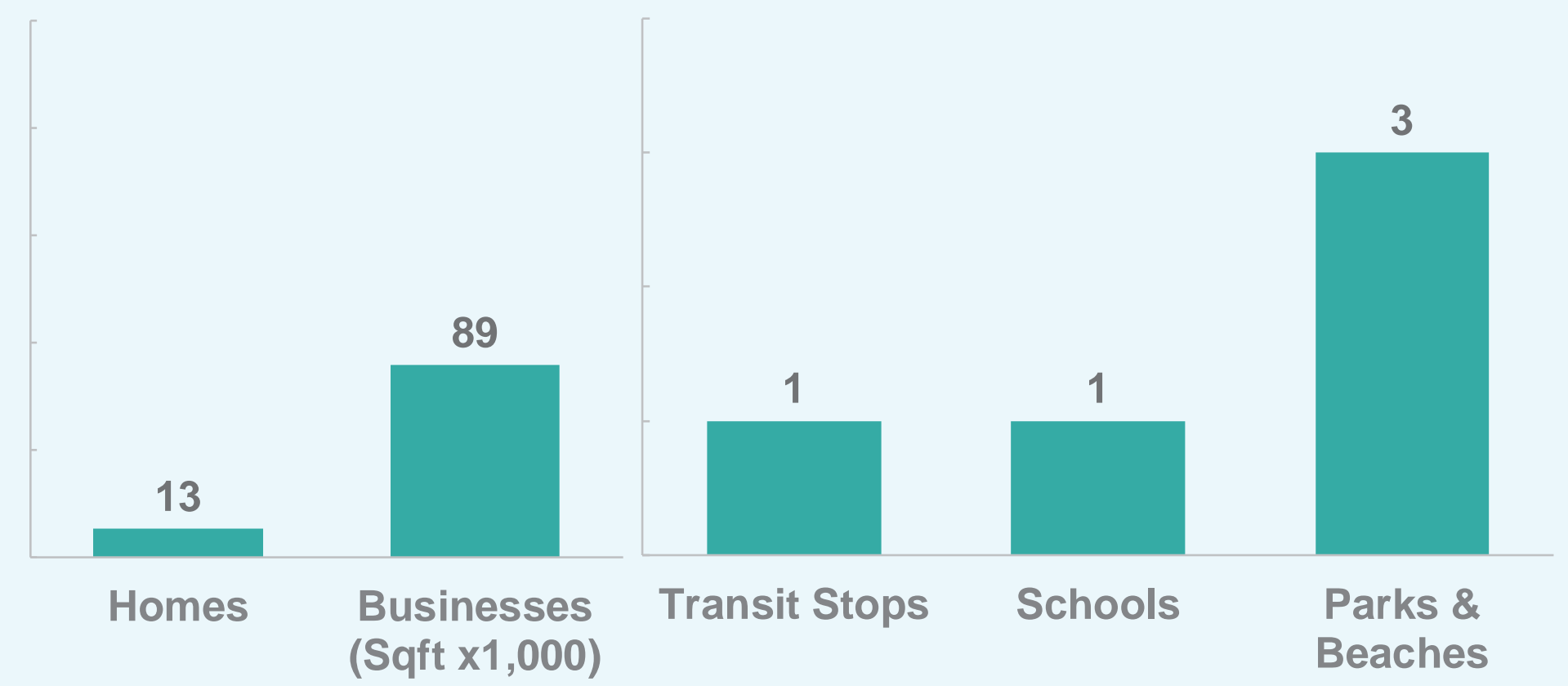
### PROJECT DESCRIPTION

- » Pedestrian rail overpass with ramps and stairs
- » Sidewalks and crosswalks on Coast Highway 101, San Elijo Ave, and Birmingham Dr
- » Class III shared bike route on Birmingham Dr

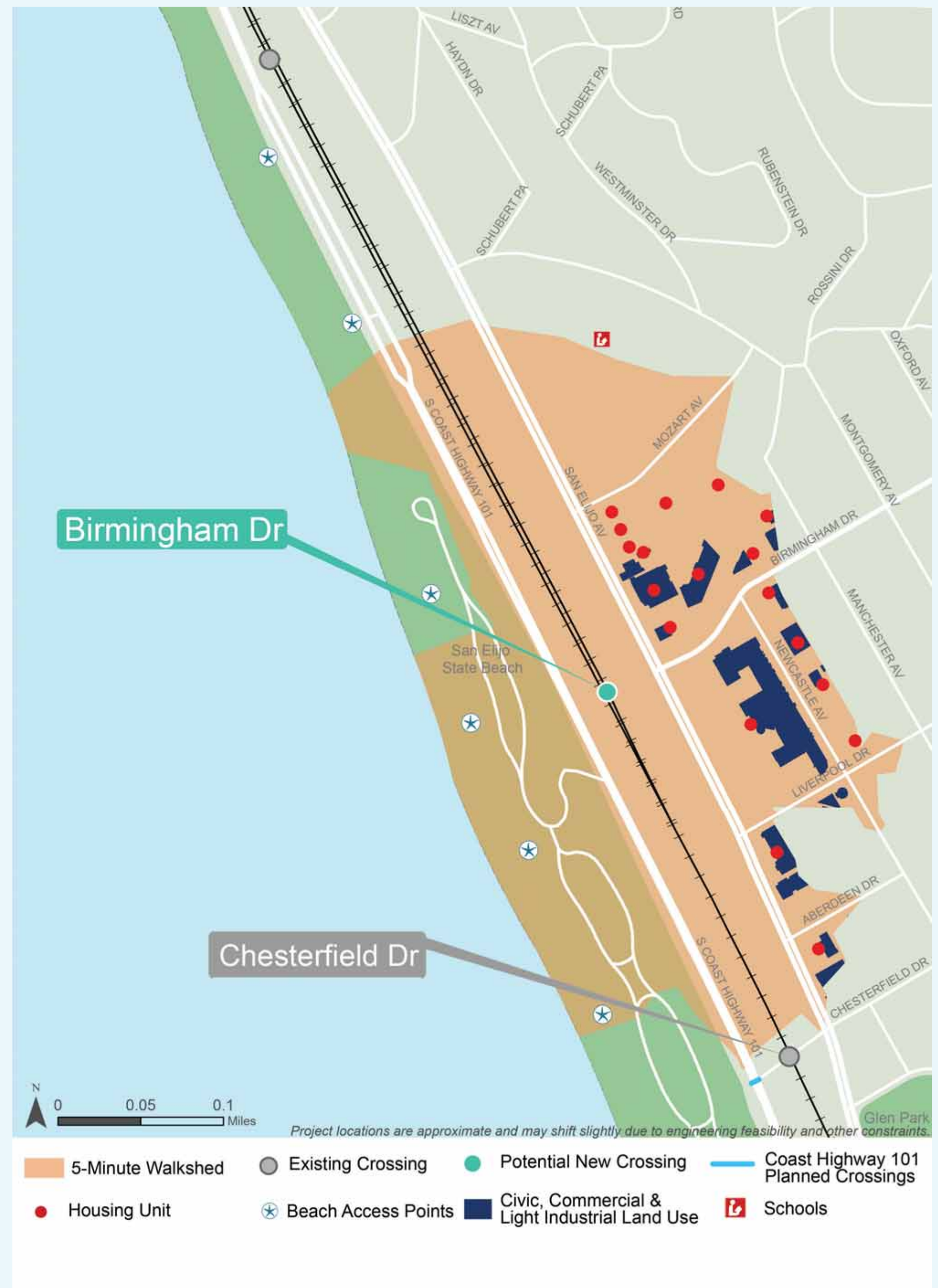
### ACCESS BENEFITS

The number of homes and destinations within a 5-minute walk helps determine the project's potential benefits, user demand, and ability to reduce greenhouse gas emissions and vehicle miles traveled.

#### 5-Minute Walk Distance (Analysis)



#### 5-Minute Walk Distance (Map)



# NORFOLK-DUBLIN-CHESTERFIELD Connector (#20)



Conceptual Design - Plan View

## PROJECT DESCRIPTION

- » Trail along west side of San Elijo Ave and decomposed granite (DG) trails south of Kilkenny D
- » Class II bike lanes and Class III shared bike routes on San Elijo Ave
- » Class III shared bike route on Norfolk Dr
- » Sidewalks on Dublin Dr

JANUARY 2020

[encinitasca.gov/Cross-Connect](http://encinitasca.gov/Cross-Connect)

