

# Leucadia Streetscape Segment B2 & C Tree Update

City of Encinitas, Urban Forest Advisory Committee

7/28/2022



# Project Goals



Enhance safety and mobility in rail corridor



Increase access to coastline



Add landscaping, parking and traffic calming measures



Preserve and revitalize N. Coast Highway 101

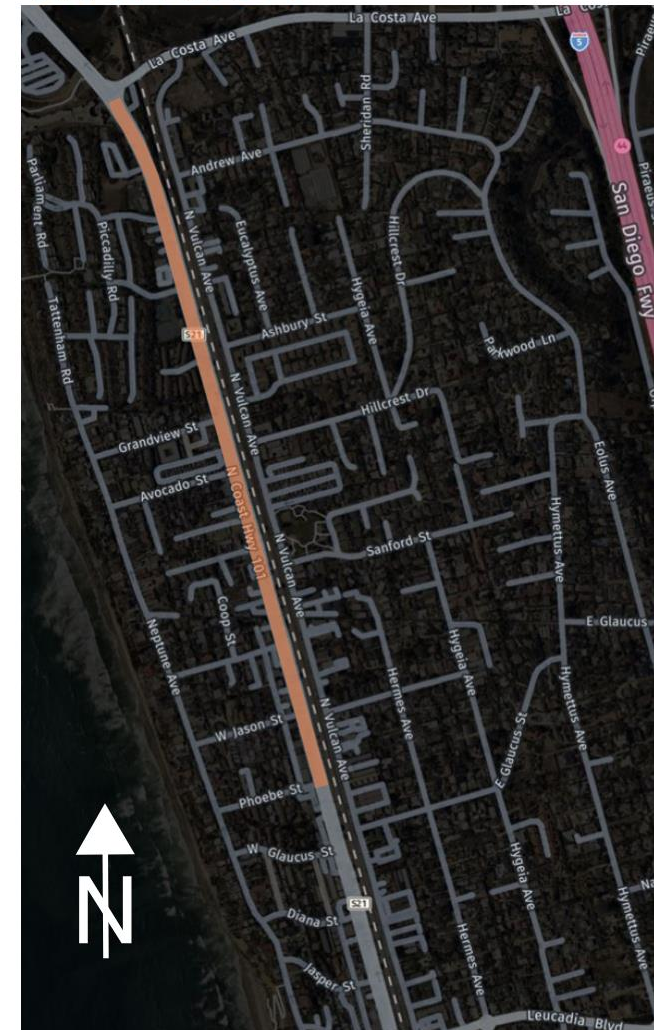
## N. Coast Highway 101 Project Components:

- Roadway Improvements: Phoebe to La Costa
- Storm Drain Infrastructure: Phoebe to Moorgate
- Eastside Parking Pods: Leucadia to Phoebe  
Grandview to Moorgate
- Trees: 120 existing, 84 remain, 36 removals, 188 new

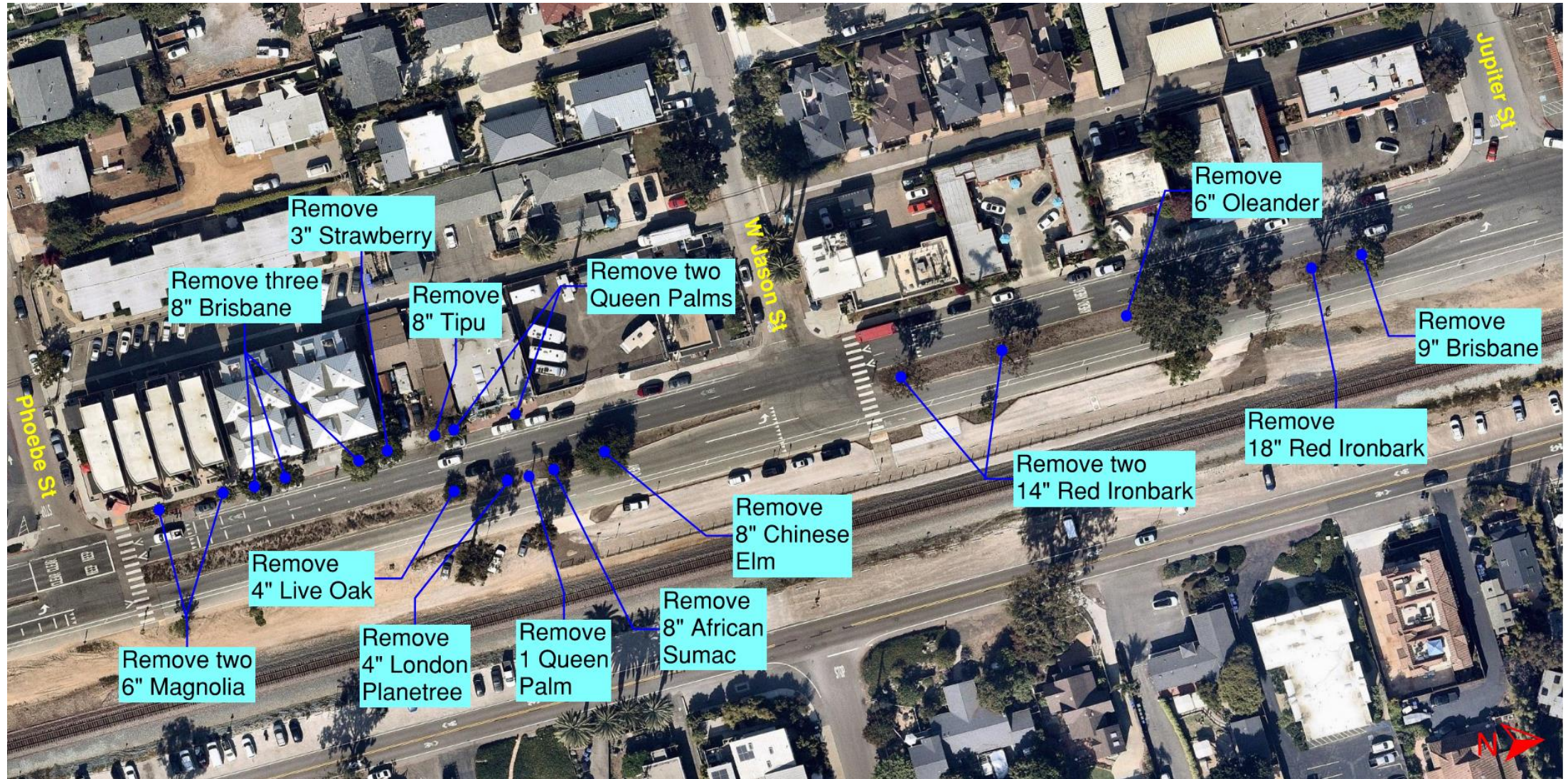
Removals: 4 Torrey Pine, 4 Eucalyptus, 4 Brisbane, 4 Strawberry, 4 Yucca, 3 Palm, 3 Pistache, 2 Magnolia, 1 Tipu, 1 Live Oak, 1 London Plane, 1 African Sumac, 1 Elm, 1 Redbud, 1 Ficus and 1 Oleander



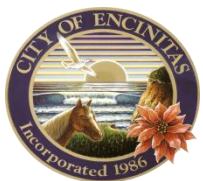
Segment B2 & C  
Phoebe St. to La Costa Ave.



# Tree Removal Overview – Segment B2



# Tree Removal Overview – Segment C



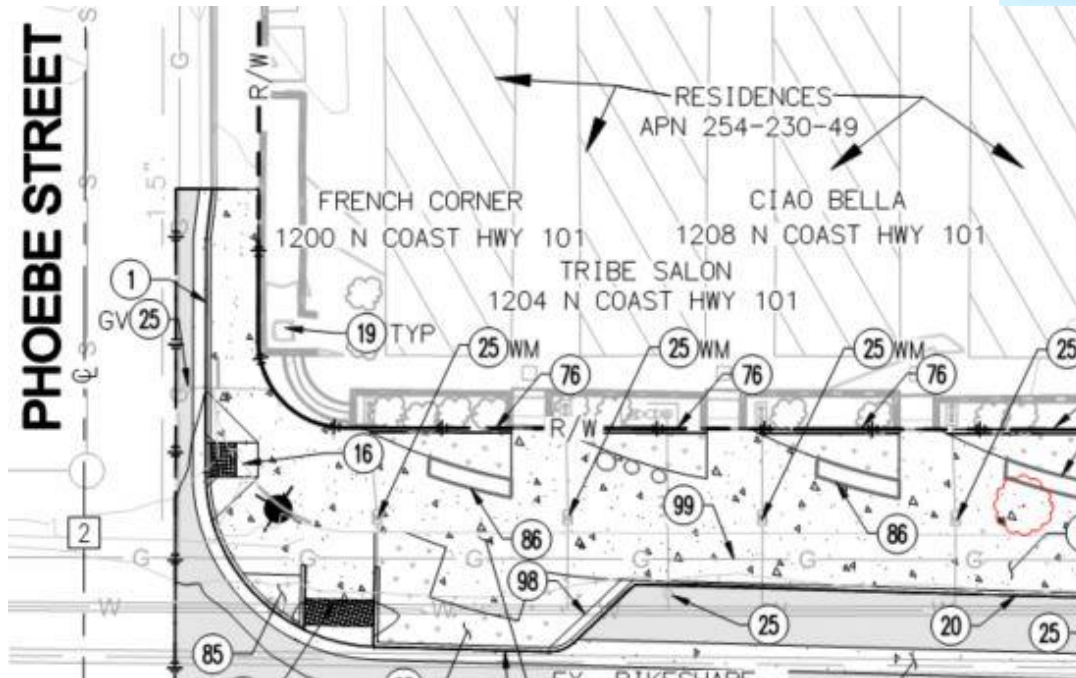
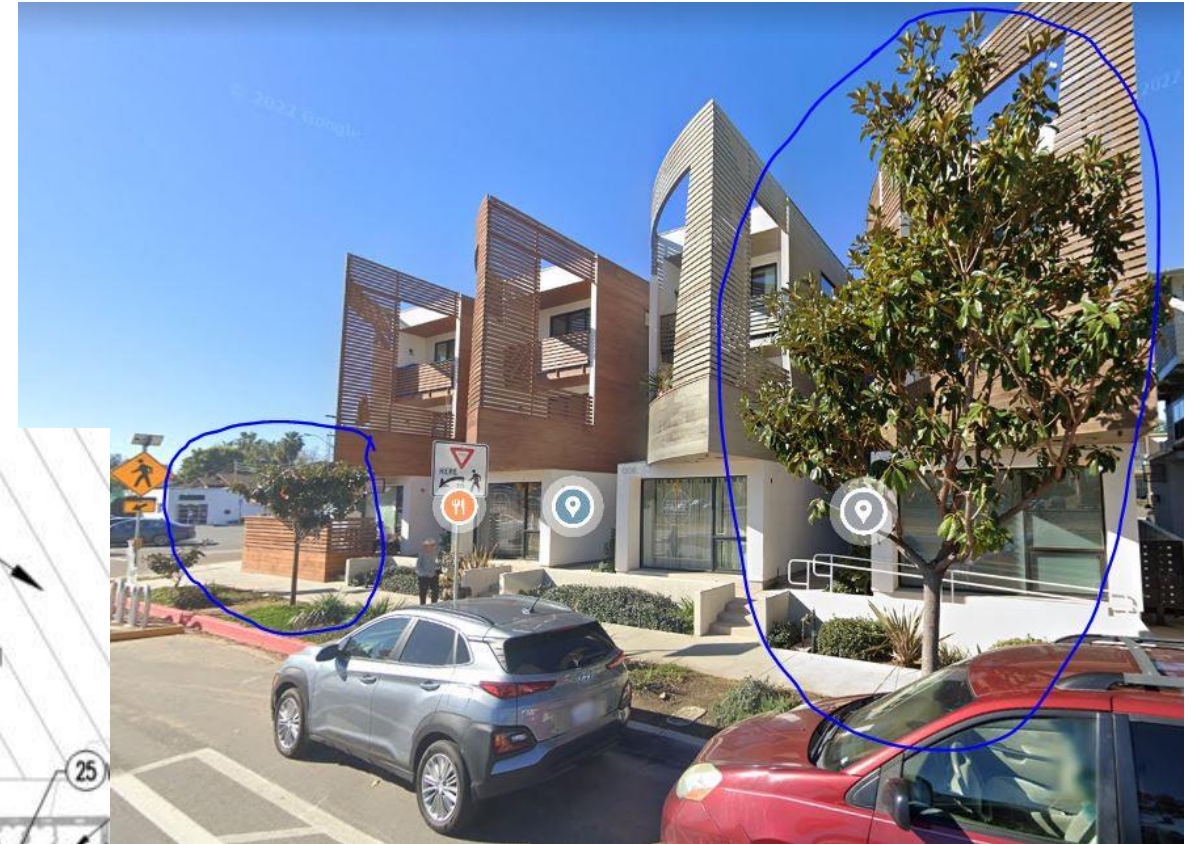
# Tree Removal Overview – Segment C



# Tree Removals – Segment B2

## 2 Southern Magnolia Trees just north of Phoebe

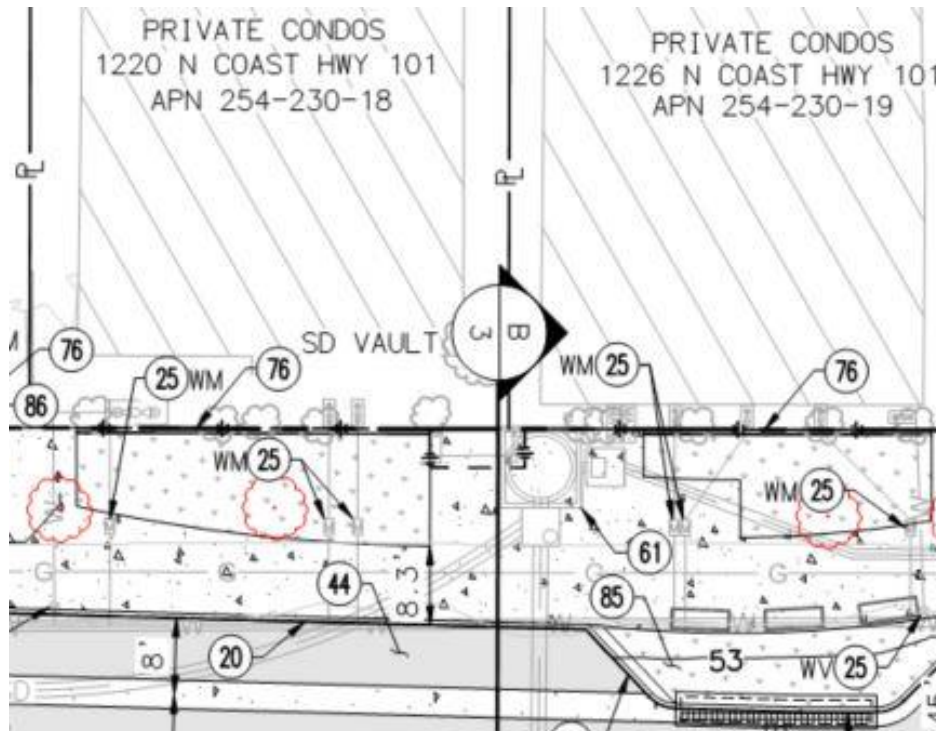
- These trees are where we will be adding a wider sidewalk with a concrete pop-out including seat walls and new landscaping



# Tree Removals – Segment B2

## 3 Brisbane Box Trees just north of Phoebe

- These trees are where we will be adding a wider sidewalk with seat walls and new landscaping

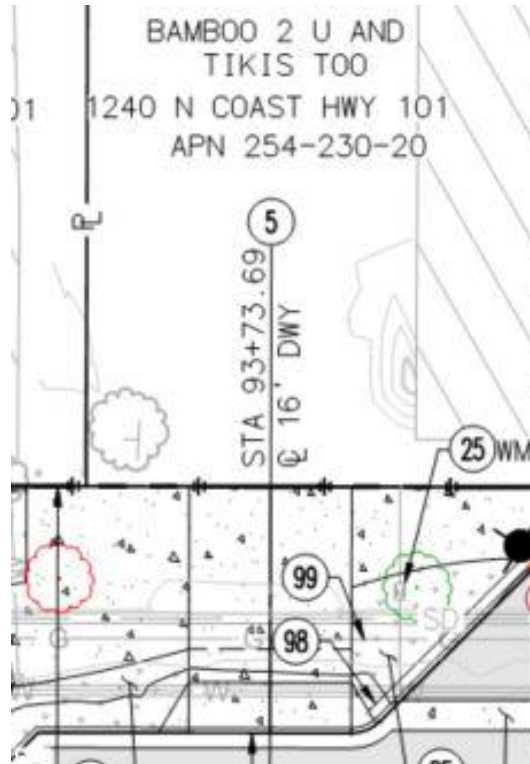




# Tree Removals – Segment B2

## 1 Strawberry and 1 Tipu Tree north of Phoebe

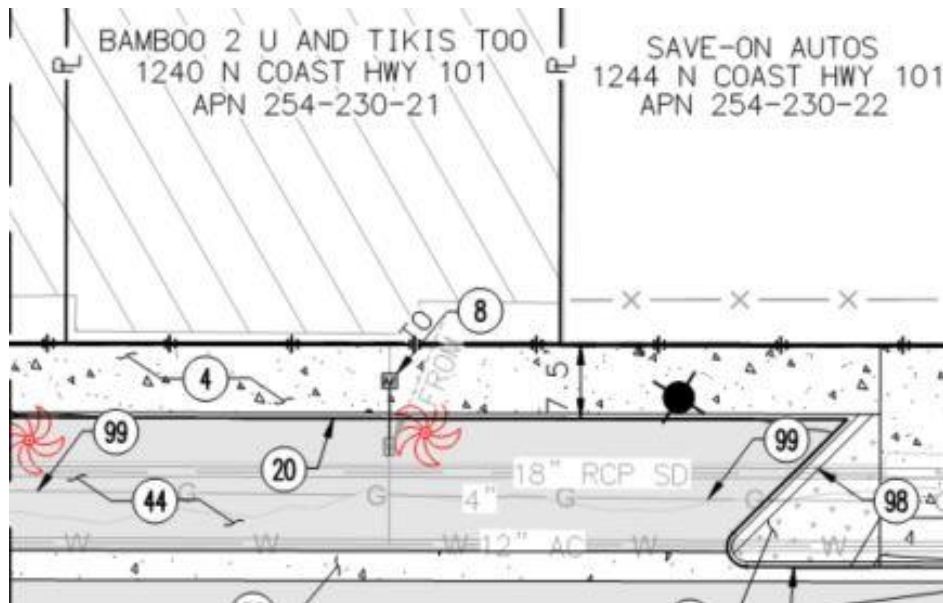
- These trees are where we will be adding a wider sidewalk and driveway and new landscaping



# Tree Removals – Segment B2

## 2 Queen Palm Trees south of Jason

- These trees are where we will be adding new reverse angle back-in parking

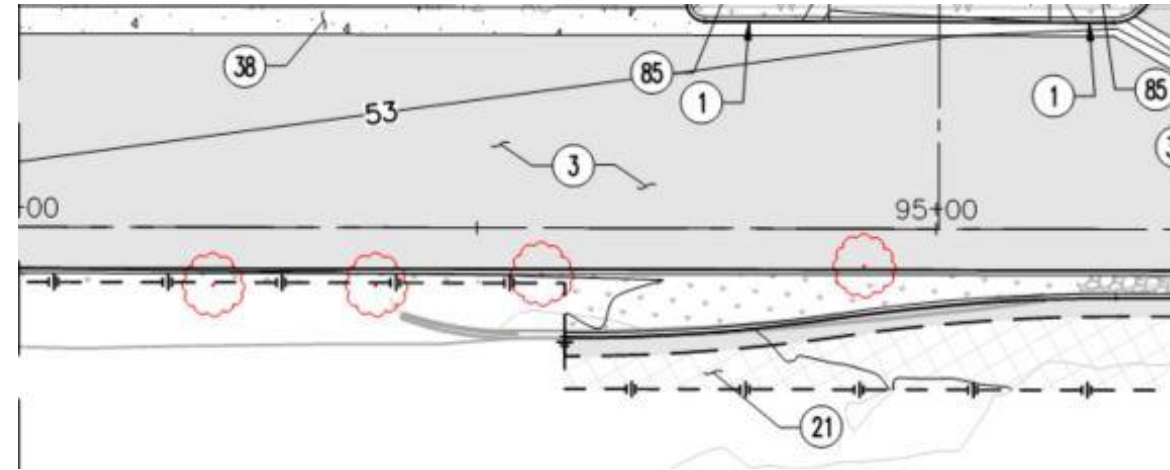


# Tree Removals – Segment B2



1 Coast Live Oak, 1 London Planetree, 1 Queen Palm,  
1 African Sumac & 1 Chinese Elm just south of Jason

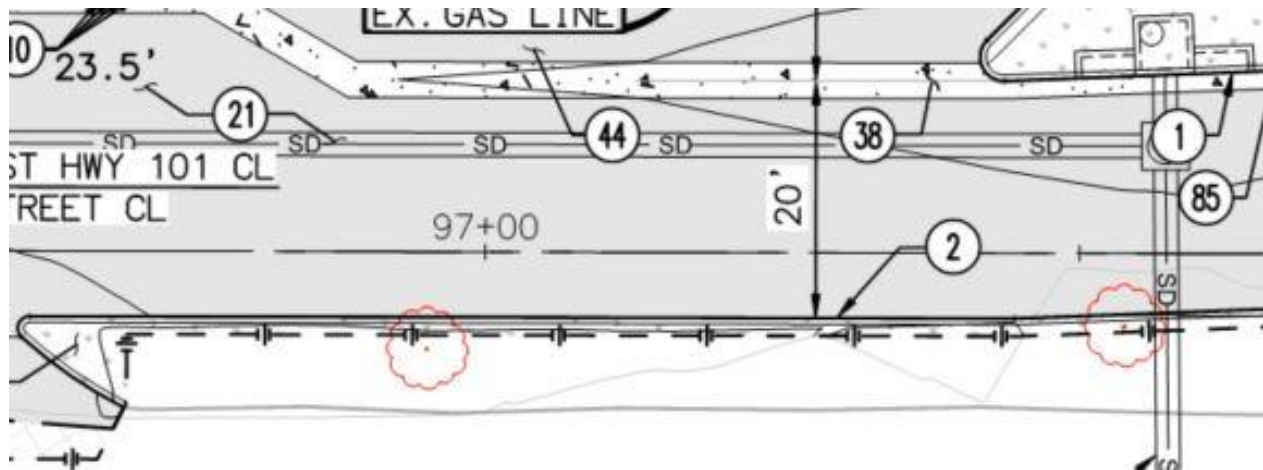
- These trees are where we will be reducing the width of the median to widen the roadway



# Tree Removals – Segment B2

## 2 Red Ironbark Eucalyptus Trees just north of Jason

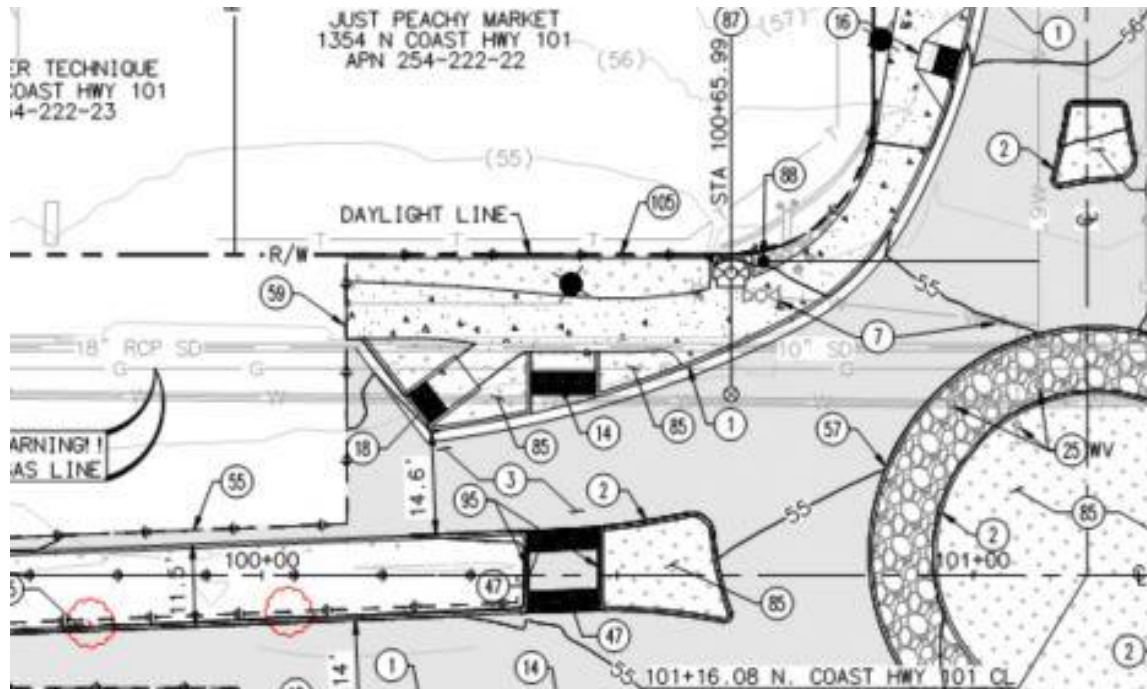
- These trees are where we will be reducing the width of the median to widen the roadway and installing a new storm drain system



# Tree Removals – Segment C

1 Red Ironbark Eucalyptus & 1 Brisbane Box Trees just south of Jupiter

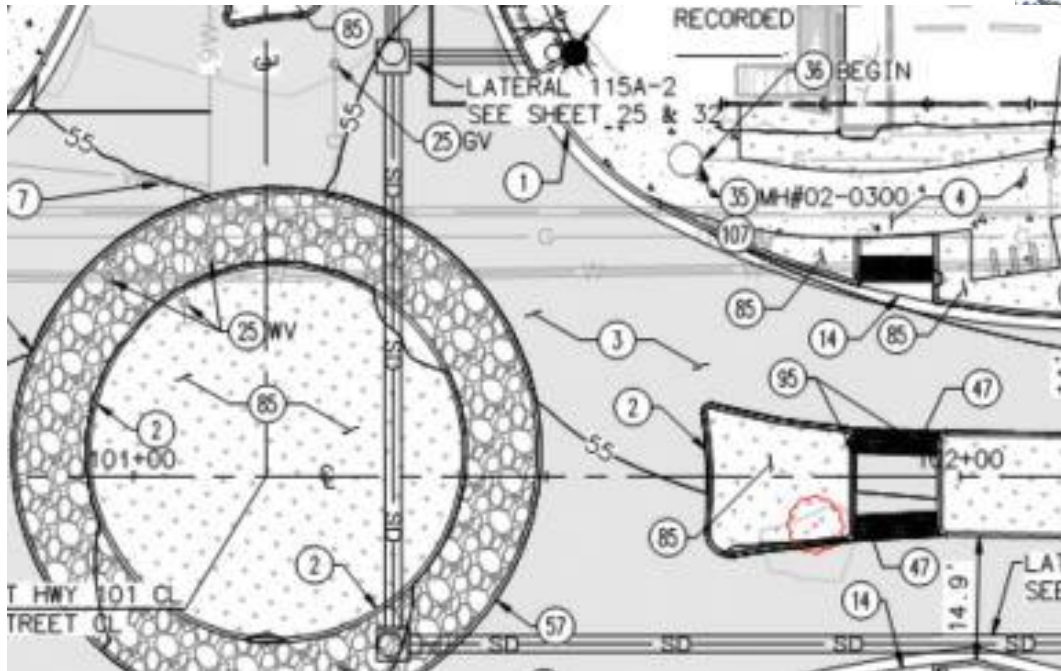
- These trees are where we will be installing a new roundabout



# Tree Removals – Segment C

## 1 Torrey Pine & 2 Chinese Pistache Trees just north of Jupiter

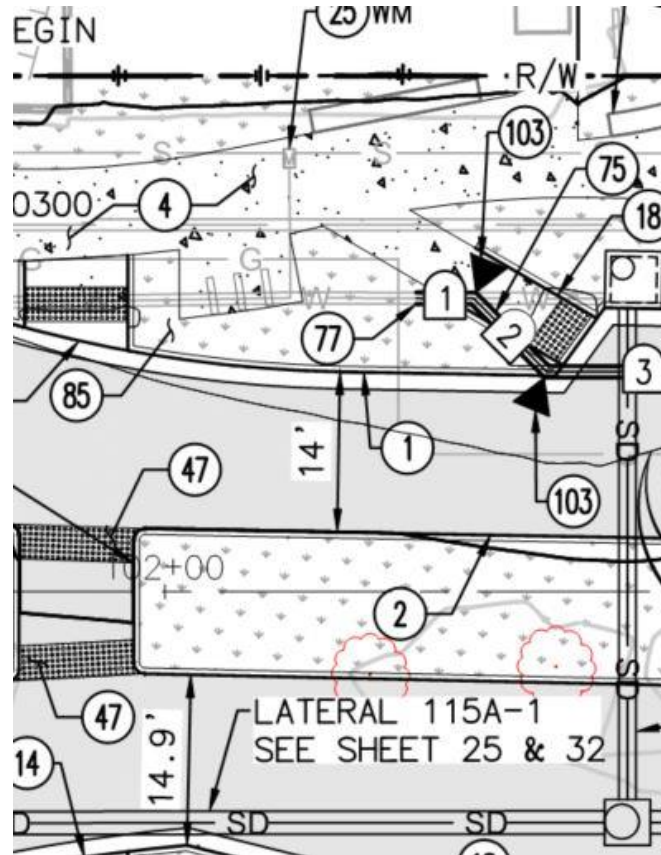
- These trees are where we will be installing a new roundabout and pedestrian crossing



# Tree Removals – Segment C

## 1 Sugar Gum Eucalyptus & 1 Strawberry Trees just north of Jupiter

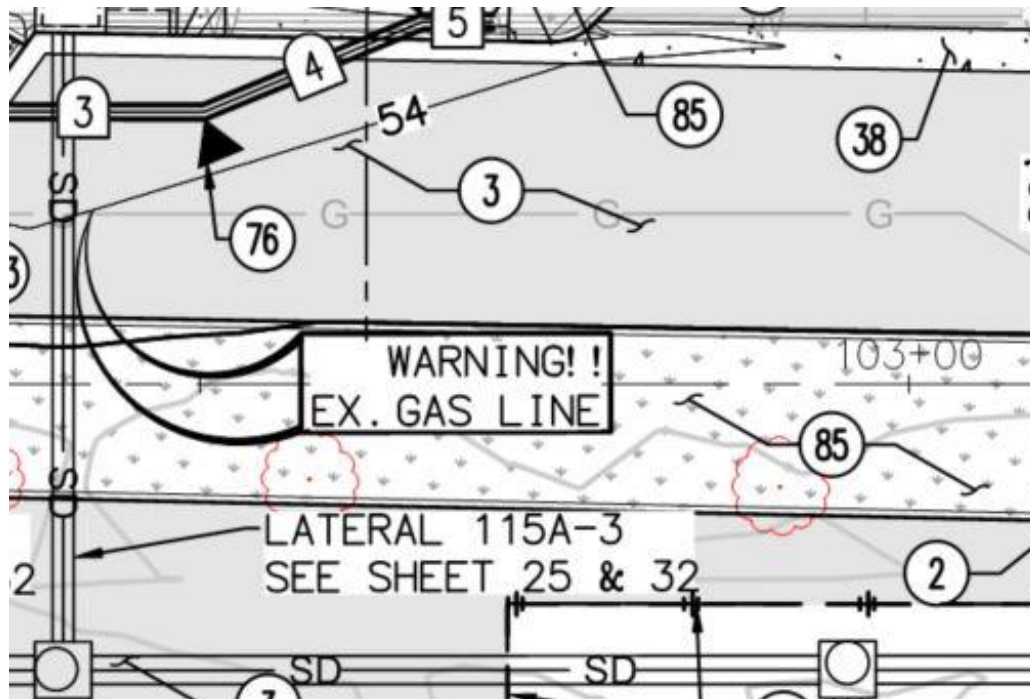
- These trees are where we will be installing a new roundabout, pedestrian crossing and storm drain system



# Tree Removals – Segment C

## 1 Torrey Pine & 2 Strawberry Trees just north of Jupiter

- These trees are where we will be installing a new roundabout and storm drain system

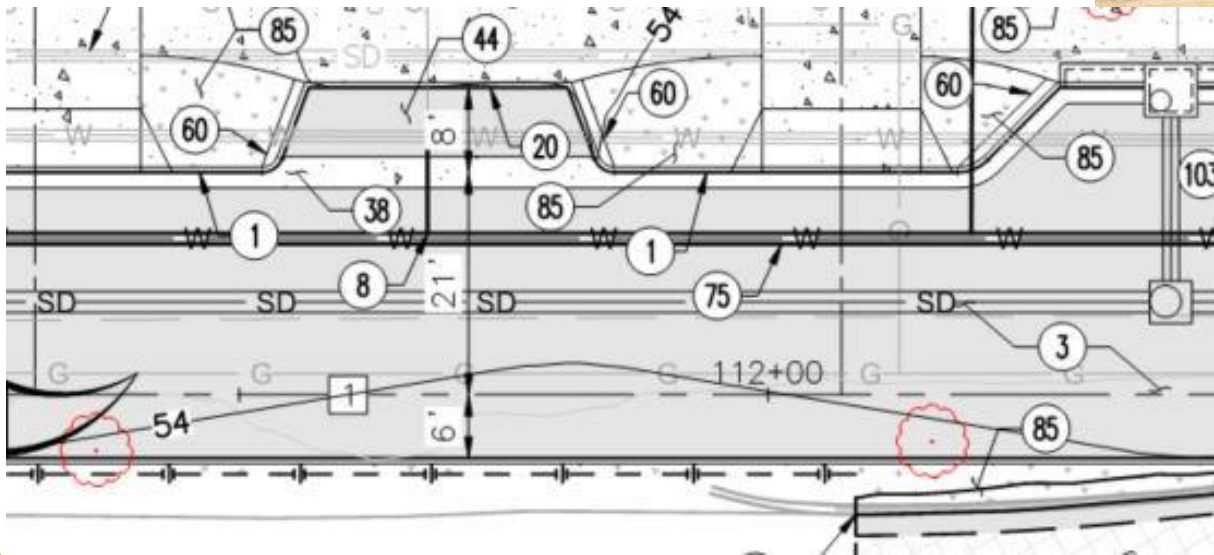




# Tree Removals – Segment C

1 Torrey Pine & 1 Chinese Pistache Trees just south of Avocado

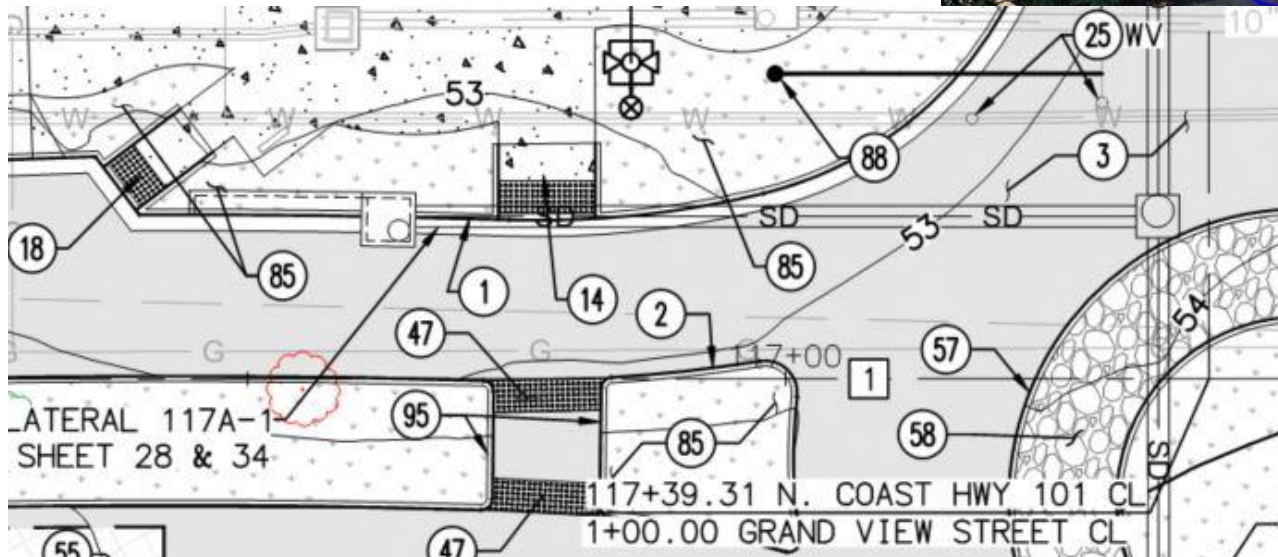
- These trees are where we will be reducing the width of the median to widen the roadway



# Tree Removals – Segment C

## 4 Spanish Dagger Yucca Trees just north of Avocado and just south of Grandview

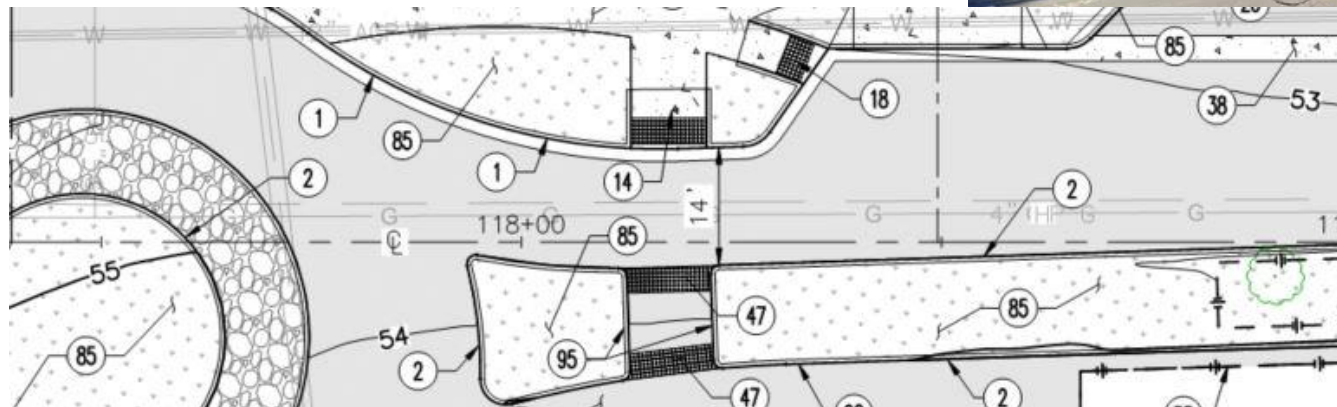
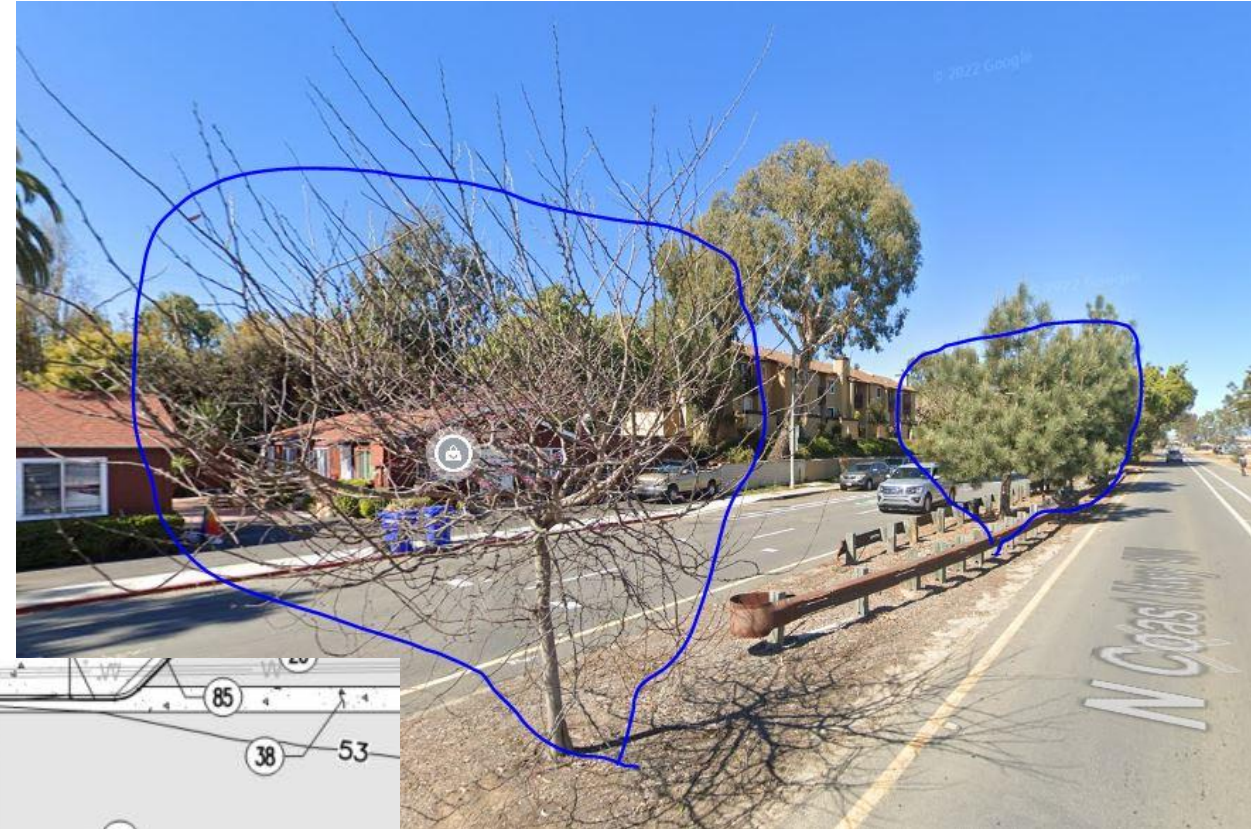
- These trees are where we will be realigning the median to install a new roundabout and pedestrian crossing



# Tree Removals – Segment C

## 1 Western Redbud & 1 Torrey Pine Trees just north of Grandview

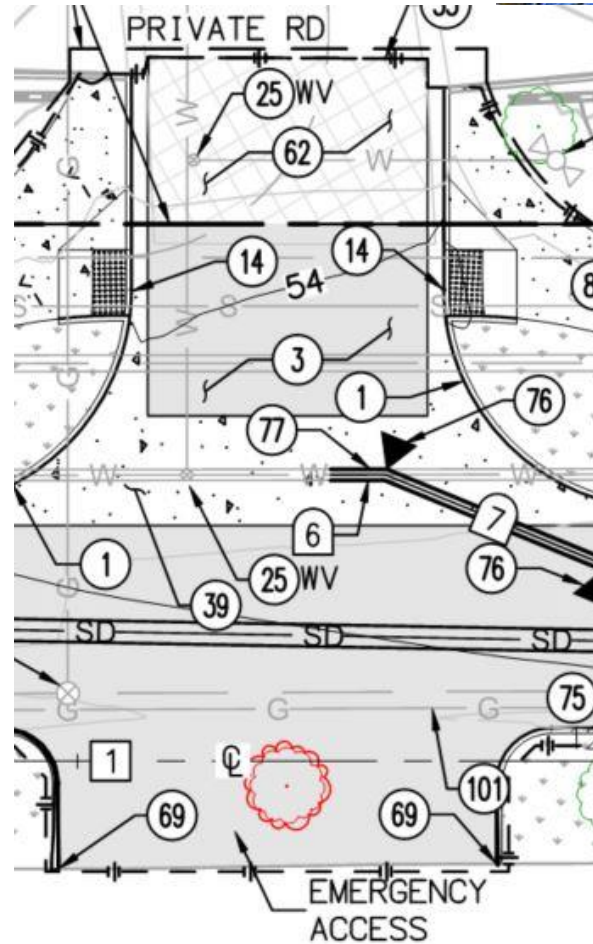
- These trees are where we will be realigning the median to install a new roundabout and pedestrian crossing



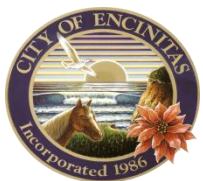
# Tree Removals – Segment C

## 1 Weeping Fig Ficus Tree north of Grandview

- This tree is where we will be removing the median to provide emergency access to the Pacifica Condo Complex



# Tree Planting Plan – Segment B2



# Tree Planting Plan – Segment C



# Tree Planting Plan – Segment C



# Tree Planting Plan – Segment C





# Native and Drought Tolerant Trees

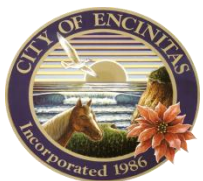
## PLANT PALETTE

KEY	BOTANICAL NAME	COMMON NAME	CONTAINER SIZE	MATURE SIZE	MUCOLS	QTY
<b>TREES</b>						
ARB MAR	ARBUTUS 'MARINA'	ARBUTUS	24" BOX	20'-30'H X 15'-20'S	L	12
BAH PUR	BAUHINIA PURPUREA	ORCHID TREE	24" BOX	20'-25'H X 15'-20'S	M	6
BRA ACE	BRACHYCHITON ACERIFOLIUS	FLAME TREE	24" BOX	40'-60'H X 20'-30'S	L	7
CAS LEP	CASSIA LEPTOPHYLLA	GOLD MEDALLION TREE	24" BOX	20'-25'H X 25'-30'S	M	6
CER OCC	CERCIS OCCIDENTALIS *	WESTERN REDBUD	24" BOX	15'-20'H X 15'-20'S	L	26
DRA DRA	DRACAENA DRACO	DRAGON TREE	24" BOX	10'-18'H X 10'-18'S	L	5
ERI DEF	ERIOBOTRYA DEFLEXA	BRONZE LOQUAT	24" BOX	15'-30'H X 15'-25'S	M	3
HAK LAU	HAKEA LAURINA	SEA URCHIN TREE	24" BOX	10'-25'H X 9'-30'S	L	4
HYM FLA	HYMENOSPORUM FLAVUM	SWEETSHADE TREE	24" BOX	12'-40'H X 9'-20'S	M	3
JAC MIM	JACARANDA MIMOSIFOLIA	JACARANDA	24" BOX	25'-40'H X 5'-30'S	M	7
KOE BIP	KOELREUTERIA BIPINNATA	CHINESE FLAME TREE	24" BOX	20'-40'H X 20'-40'S	M	6
MAG GRA	MAGNOLIA GRANDIFLORA 'D.D. BLA'	D.D. BLANCHARD MAGNOLIA	24" BOX	30'-40'H X 30'-40'S	M	5
MEL NES	MELALEUCA NESOPHILA	PINK MELALEUCA	36" BOX	25'-40'H X 15'-25'S	L	10
MET EXC	METROSIDEROS EXCELSUS	NEW ZEALAND CHRISTMAS TREE	24" BOX	15'-30'H X 15'-30'S	M	7
PIN TOR	PINUS TORREYANA *	TORREY PINE	36" BOX	40'-70'H X 25'-40'S	L	13
QUE AGR	QUERCUS AGRIFOLIA *	COAST LIVE OAK	24" BOX (9 PROVIDED BY CITY)	30'-60' X 40'-70'	L	16
SPA CAM	SPATHODEA CAMPANULATA	AFRICAN TULIP TREE	24" BOX	40'-70'H X 20'-50'S	M	10
STE SIN	STENOCARPUS SINUATUS	FIREWHEEL TREE	36" BOX	20'-30'H X 12'-15'S	M	9



## Future Tree Work:

- **Median: 27 removals & 94 plantings**
  - Estimated Spring 2023 – Summer 2023: Phoebe to La Costa
- **West Sidewalk: 9 removals & 94 plantings**
  - Estimated Fall 2023 – Winter 2023/24: Phoebe to La Costa



# QUESTIONS?

