

**TREES AND PARKING LOTS
PRESENTATION TO
ENCINITAS URBAN FOREST ADVISORY COMMITTEE
MAY 23, 2024**

**BY
MARK WISNIEWSKI**

PHOTOS TAKED TAKEN ON MAY 21, 2024
BETWEEN 1:45 AND 3:00 PM EXCEPT AS NOTED



Ralphs/Trader Joes on El Camino Real
Eucalyptus citriodora - Lemon-scented Gum - Original Trees



Ralphs/Trader Joes on El Camino Real
Arbutus 'Marina' - Replacement Trees after remodel



Peets Coffee/Habit Burger on Encinitas Blvd.
Arbutus 'Marina' - Replacement Trees after original trees died



Chicks/Garden State Bagels on El Camino Real
No Parking Lot or Street Trees
Property was relandscaped when building was remodeled



Scripps Coastal Medical Center on El Camino Real
Tipuana tipu - Tipu Tree - Every 3 parking spaces



Scripps Coastal Medical Center on El Camino Real
Tipuana tipu - Tipu Tree - Conflict with light pole



Home Depot on El Camino Real

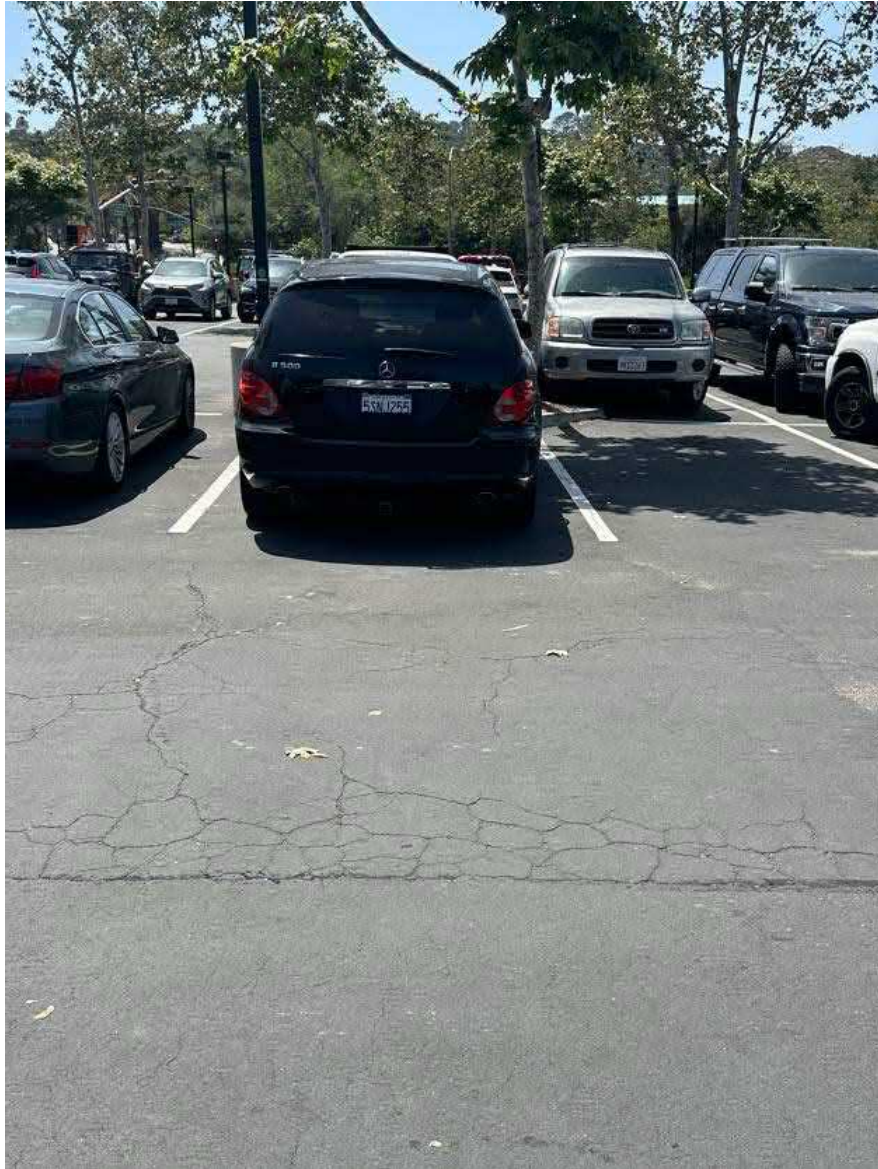
Platanus racemose – California sycamore

Each tree at maturity (if canopy is not over pruned) could shade 4 spaces

Limited light pole conflicts



Home Depot on El Camino Real
Platanus racemosa – California sycamore
One of several recent replacement trees



Home Depot on El Camino Real
Platanus racemose – California sycamore
“Wife Shading” Parking Technique



Home Depot on El Camino Real
Platanus racemose – California sycamore
Limited 4'x4' planting space



Encinitas Ranch Town Center on El Camino Real
Cupaniopsis anacardioides – Carrotwood tree
Cars parked in shade
Tree size larger related to greater soil volume compared to smaller planting sites



Encinitas Ranch Town Center on El Camino Real
Lophostemon confertus – Brisbane box
One tree for every 10 parking spaces in 4'x4' planting spaces



Encinitas Ranch Town Center on El Camino Real

Lophostemon confertus – Brisbane box

Shade cast for 1 parking space at 2:30p.m.

Trees have been pruned by over thinning and by reducing canopy size resulting in smaller and less dense canopy



Encinitas Ranch Town Center on El Camino Real
Syagrus romanzoffiana - Queen palms – One of several palm species used in shopping center
Palms provide a minimum amount of shade and require annual pruning



Encinitas Ranch Town Center on El Camino Real
Lophostemon confertus – Brisbane box
Tree in 3' wide planter damaged by car bumpers which typically extend 2' or more past tires



Dollar Store/Rubio's on El Camino Real
Ficus rubiginosa – Rusty leaf fig
1 of 2 trees in 18' wide planting bed



Dollar Store/Rubio's on El Camino Real
Lophostemon confertus – Brisbane box
Numerous utility and light pole conflicts



Smart and Final/CVS Pharmacy on Encinitas Blvd.
Europaea olea – Olive
All street trees have been removed with no replacements

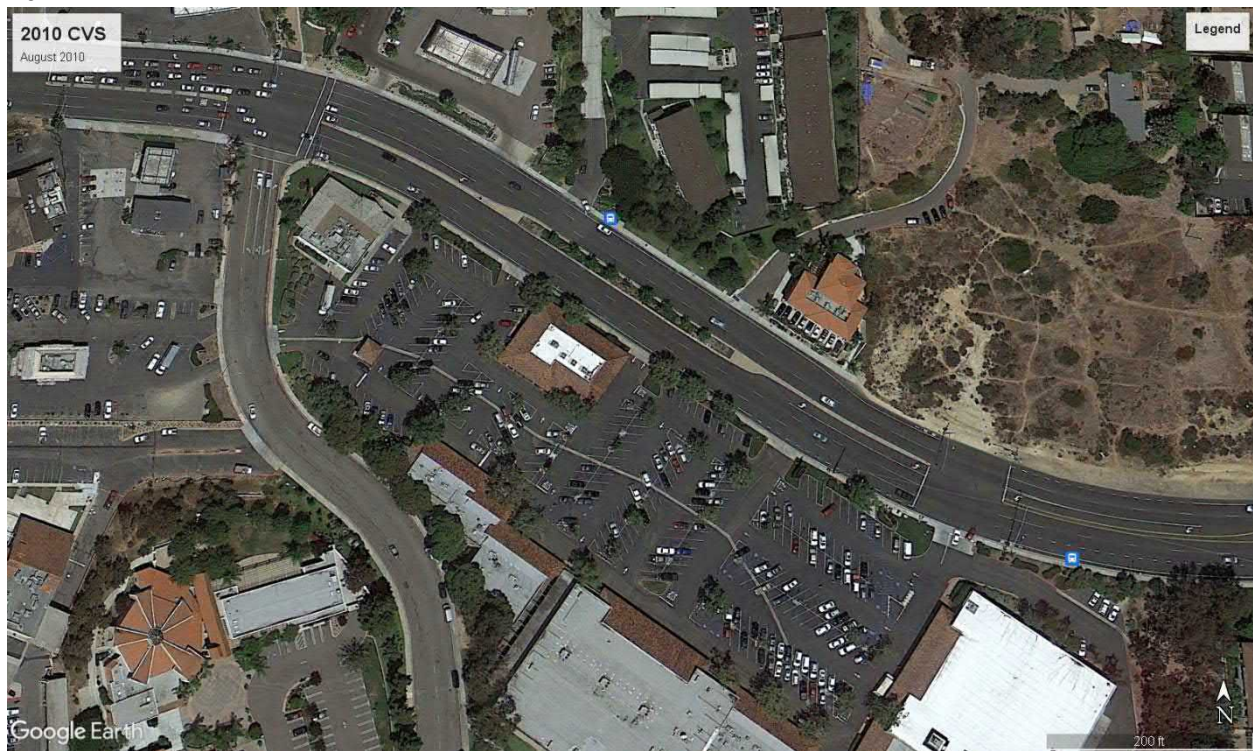


Smart and Final/CVS Pharmacy on Encinitas Blvd.

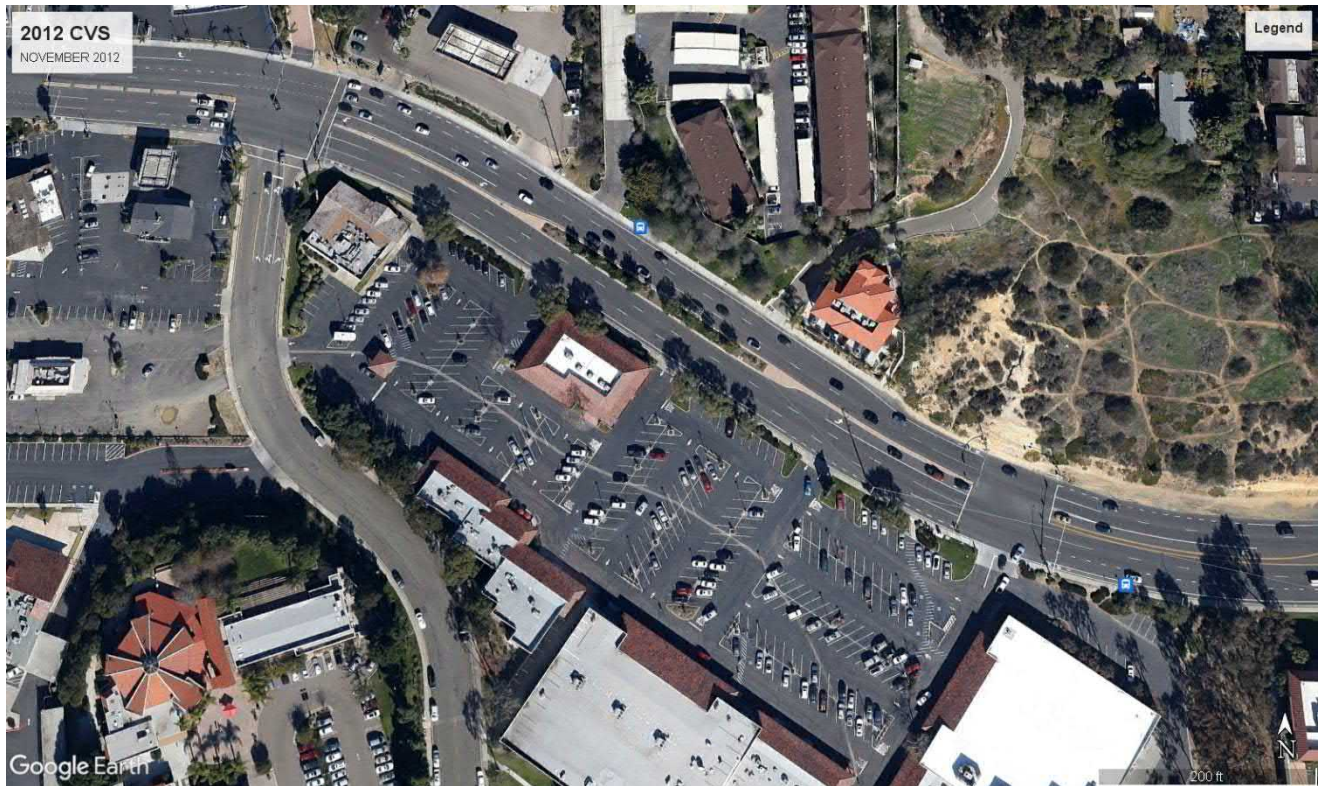
Magnolia grandiflora – Magnolia ‘Little Gem’

2 trees cast minor amount of shade

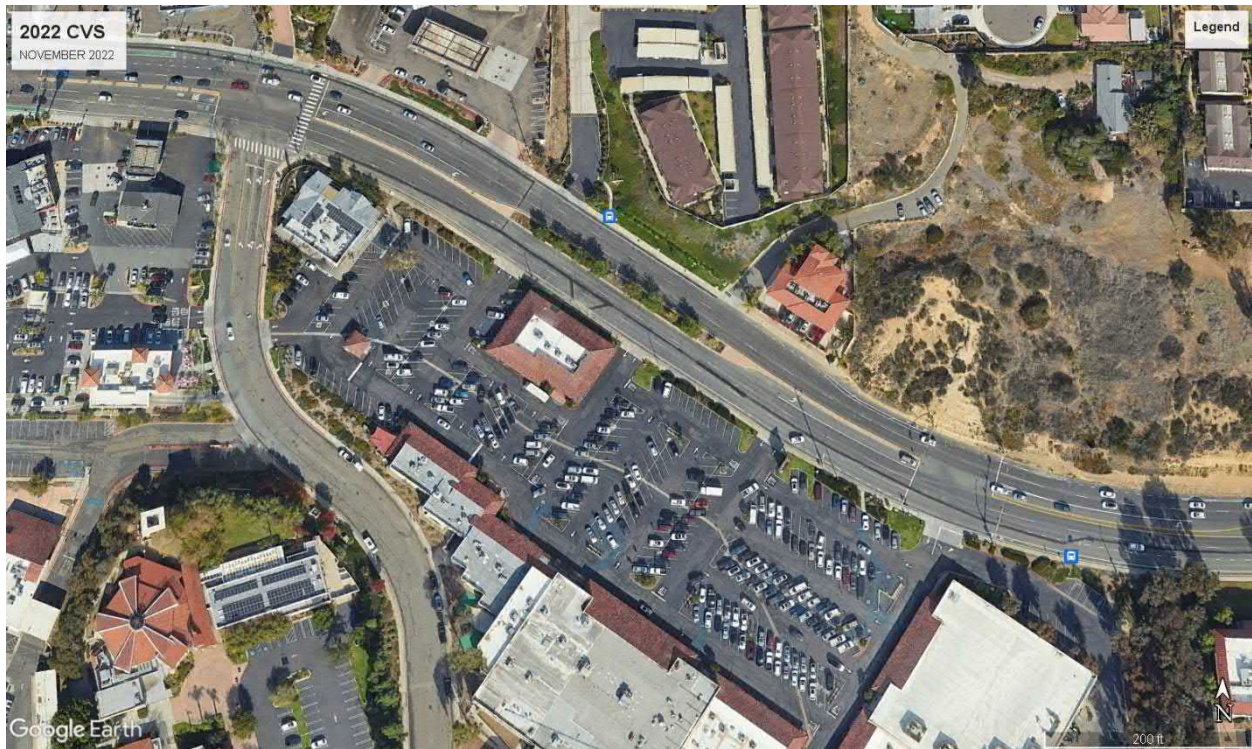
These trees were planted to replace mature removed *Platanus racemose* – California sycamore



Smart and Final/CVS Pharmacy on Encinitas Blvd.
Platanus racemose – California sycamore and Olives trees at Street
Google Earth photo dated 08/2010



Smart and Final/CVS Pharmacy on Encinitas Blvd.
Magnolia grandiflora – Magnolia ‘Little Gem’ and Olives trees
Google Earth photo dated 11/2012



Smart and Final/CVS Pharmacy on Encinitas Blvd.
Magnolia grandiflora – Magnolia ‘Little Gem’ and Olive trees removed.
Google Earth photo dated 11/2022